

WILD RIVER

LEGEND

- 6" DOM
- 4" "
- 3" "
- 2" "
- WELL
- VALVE
- HYDRANT
- BLOWOFF
- SERVICE
- ACCOUNT NO.



WELL #1 IS LOCATED 900 FEET NORTH AND 1258' FEET EAST FROM THE CENTER 1/4 CORNER OF SEC. 23 T. 21S. R. 9 E. BEING WITHIN THE S. 1/4 OF THE NE 1/4 OF SEC. 23 T. 21S. R. 9E W.M. IN THE COUNTY OF DESCHUTES.

WELL #2 IS LOCATED 940 FEET SOUTH AND 490 FEET EAST FROM THE N. 1/4 CORNER OF SEC. 23 T. 21S. R. 9E BEING WITHIN THE NW 1/4 OF THE NE 1/4 OF SEC. 23 T. 21S. R. 9E W.M. IN THE COUNTY OF DESCHUTES.

T. 21S. R. 9E SEC. 23:

- NW 1/4 NE 1/4 62 DOMESTIC USERS AT 2.5 GPM EACH
- SW 1/4 NE 1/4 30 DOMESTIC USERS AT 2.5 GPM EACH
- NE 1/4 NE 1/4 62 DOMESTIC USERS AT 2.5 GPM EACH
- SE 1/4 NE 1/4 34 DOMESTIC USERS AT 2.5 GPM EACH

NOTE: DOMESTIC TO INCLUDE IRRIGATION OF LAWNS AND NON-COMMERCIAL GARDENS NOT TO EXCEED 1/2 ACRE PER FAMILY.

: CIRCLED NUMBERS INDICATE POTENTIAL USERS IN EACH QUARTER-QUARTER. UNDERLINED NUMBERS INDICATE PRESENT USERS

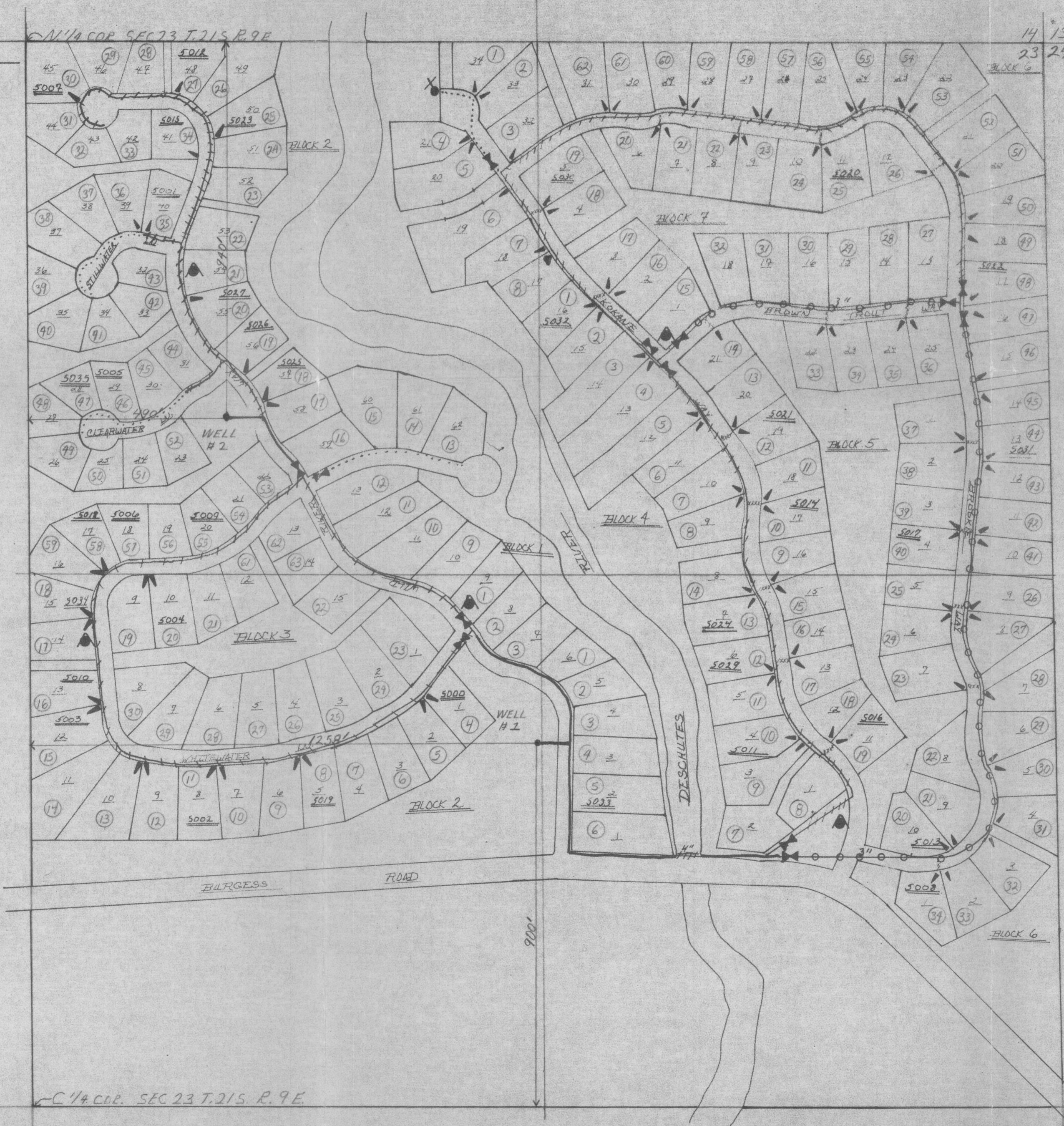
Application No. G-10349
 Permit No. G 9972

RECEIVED
 JAN 27 1983
 WATER RESOURCES DEPT.
 SALEM, OREGON

WILD RIVER

LEGEND

6" DOM	—————
4" "	—————
3" "	—————
2" "
WELL	●
VALVE	⊗
HYDRANT	▲
BLOWOFF	⊙
SERVICE	—
ACCOUNT NO.	#



WELL #1 IS LOCATED 900 FEET NORTH AND 1258' FEET EAST FROM THE CENTER 1/4 CORNER OF SEC. 23 T. 21S. R. 9 E. BEING WITHIN THE S.W. 1/4 OF THE NE 1/4 OF SEC 23 T. 21S. R. 9 E. W.M. IN THE COUNTY OF DESCHUTES.

WELL #2 IS LOCATED 940 FEET SOUTH AND 490 FEET EAST FROM THE N 1/4 CORNER OF SEC. 23 T. 21S. R. 9 E BEING WITHIN THE NW 1/4 OF THE NE 1/4 OF SEC 23 T. 21S. R. 9 E W.M. IN THE COUNTY OF DESCHUTES.

T. 21S. R. 9E SEC. 23:

NW 1/4 NE 1/4 62 DOMESTIC USERS AT 2.5 GPM EACH

SW 1/4 NE 1/4 30 DOMESTIC USERS AT 2.5 GPM EACH

NE 1/4 NE 1/4 62 DOMESTIC USERS AT 2.5 GPM EACH

SE 1/4 NE 1/4 34 DOMESTIC USERS AT 2.5 GPM EACH

NOTE: DOMESTIC TO INCLUDE IRRIGATION OF LAWNS AND NON-COMMERCIAL GARDENS NOT TO EXCEED 1/2 ACRE PER FAMILY.

: CIRCLED NUMBERS INDICATE POTENTIAL USERS IN EACH QUARTER-QUARTER. UNDERLINED NUMBERS INDICATE PRESENT USERS

Application No. G-10349
 Permit No. G 9972

RECEIVED
 JAN 27 1983
 WATER RESOURCES DEPT.
 SALEM, OREGON

