

RECEIVED

AUG 07 2023

OWRD

TYLER ROLEN  
RSF ENTERPRISES LLC  
4635 THOMPSON CREEK RD  
JACKSONVILLE, OR 97530

SITUATED IN  
SECTION 8, TOWNSHIP 39 S,  
RANGE 4 W  
JACKSON COUNTY OREGON

LEGEND



C-16465 / C-32984 PRIMARY IRRIGATION  
3.60 ACS  
0.82 ACS NE NW  
2.78 ACS NW NW



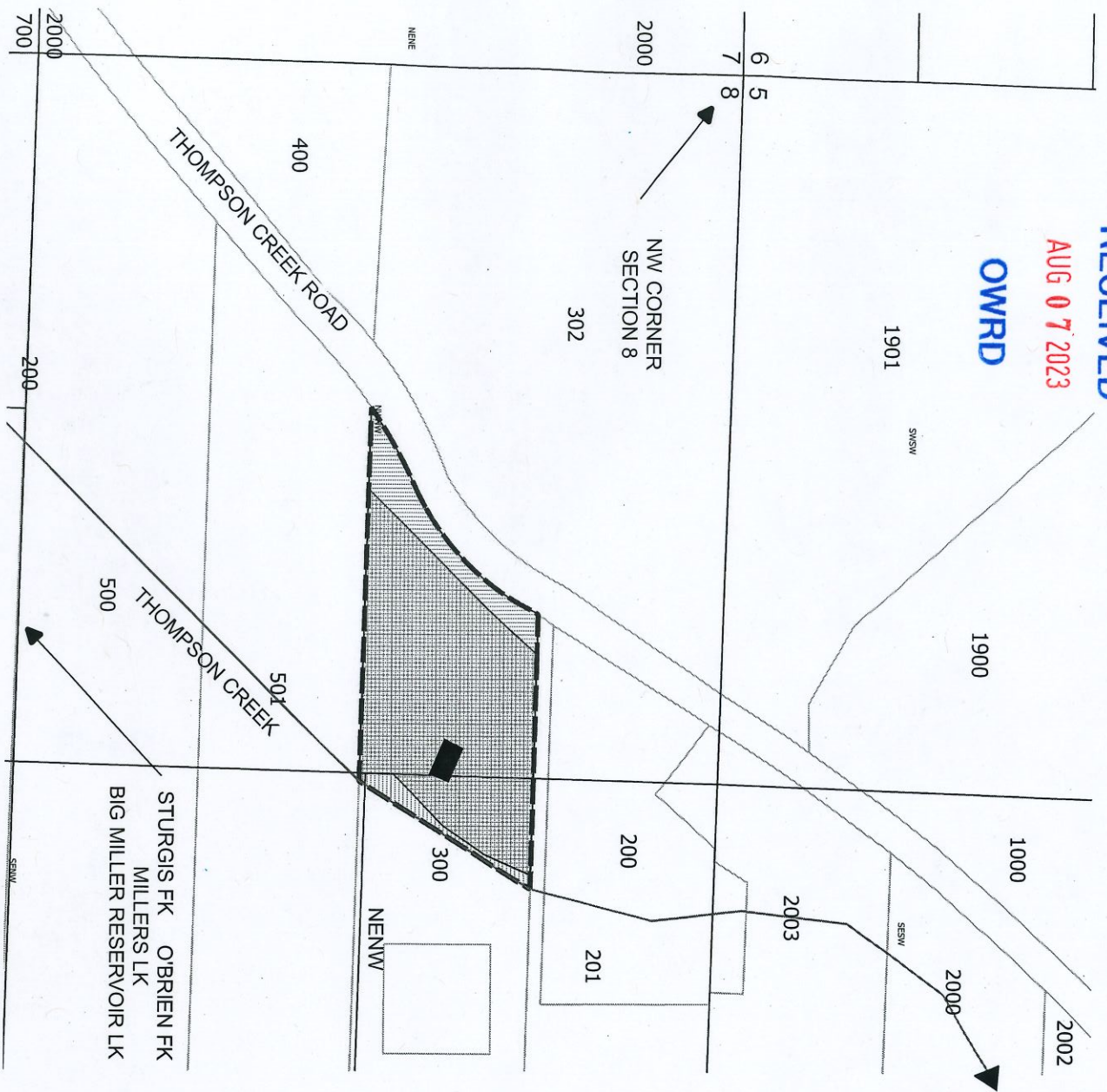
C-93252 / C-93253 / C-932453  
SUPPLEMENTAL IRRIGATION  
3.97 ACS  
0.64 ACS NE NW  
3.33 ACS NW NW



R-15534 SOURCE  
POINT OF DIVERSION  
505' S 1280' E NW CORNER SECTION 8



R-15534 SECONDARY PERMIT  
SUPPLEMENTAL IRRIGATION (MAY-SEP)  
PRIMARY NURSERY (JAN-DEC)  
4.15 ACS  
0.82 ACS NE NW  
3.33 ACS NW NW



This map is not intended to provide legal dimensions or locations of property ownership lines

ParsonsWater Consulting LLC  
rick.parsons@parsonwater.com  
541.499.0257 303.667.5067