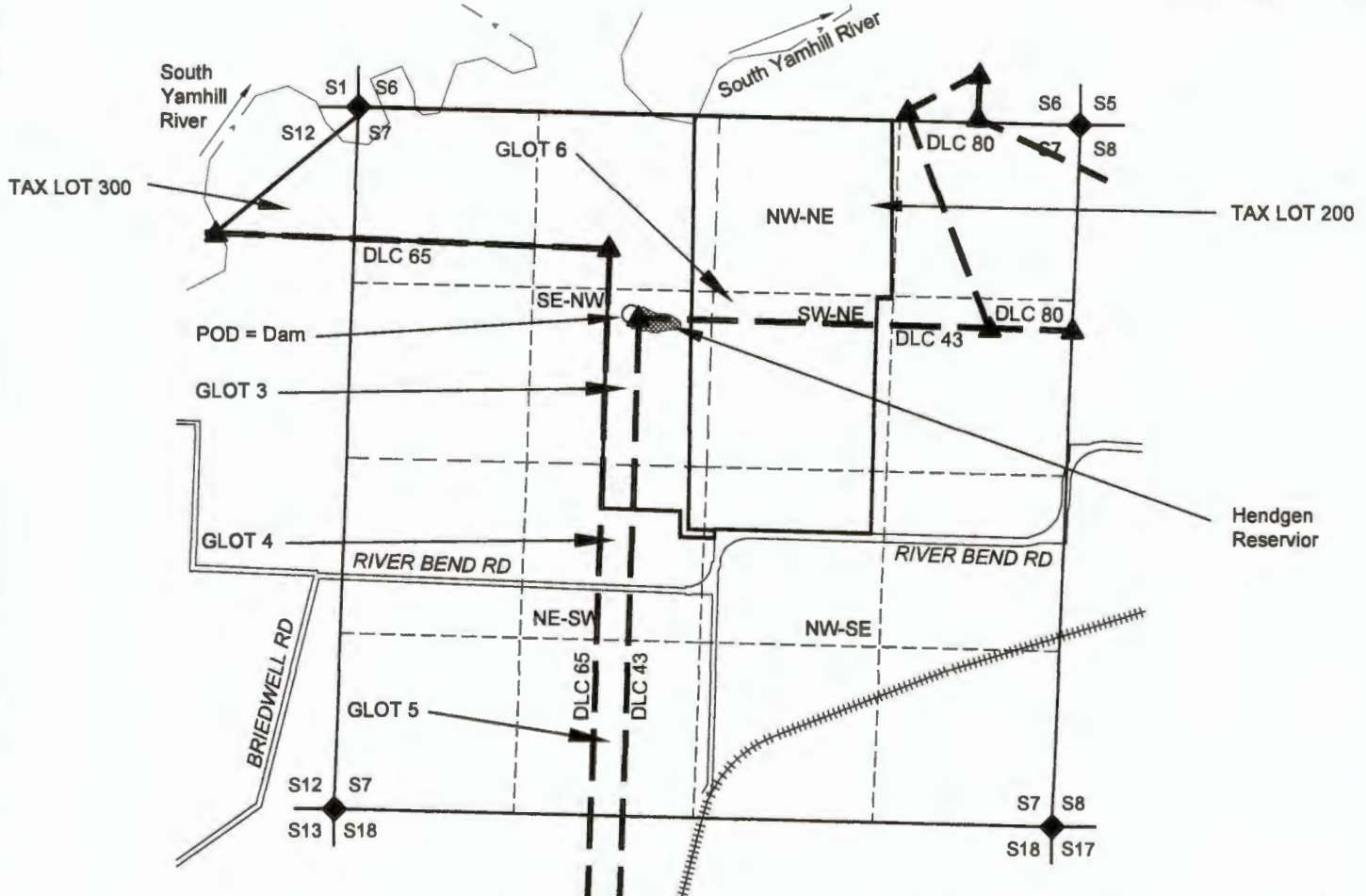


MAP FOR Application to Store Water S7, T5S, R4W, YAMHILL COUNTY



1 IN = 1320 FT
0 660 1320



THE POINT OF DIVERSION LOCATION IS 1505' SOUTH AND 1990' EAST OF NW CORNER SECTION 7.

RECEIVED

AUG 21 2023

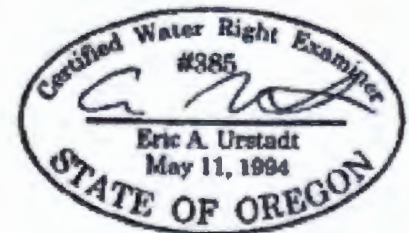
OWRD

NOTES:

- THIS MAP IS NOT INTENDED TO PROVIDE LEGAL DIMENSIONS OR LOCATIONS OF PROPERTY OWNERSHIP LINES.
- PROPERTY, QUARTER-QUARTER, AND DONATION LAND CLAIM LINES ARE BASED ON THE TAX ASSESSOR MAP FOR SECTION 7, T5S, R4W.
- WATER CONVEYANCE LINES SHALL BE ALL WITHIN THE PROPERTY AND THEREFORE ARE NOT SHOWN.

LEGEND

- DONATION LAND CLAIM (DLC) CORNER
- SECTION CORNER
- POINT OF DIVERSION
- STREAM OR SURFACE DRAINAGE
- TAX LOT LINE
- SECTION LINE
- QUARTER-QUARTER LINE
- DLC LINES
- ROADS
- RAILROADS
- RESERVOIR



MAP BY:
ASPEN RURAL LAND CONSULTING
 ERIC URSTADT, PE, PLS
 JUL 2023
 WWL-Hendgen5B