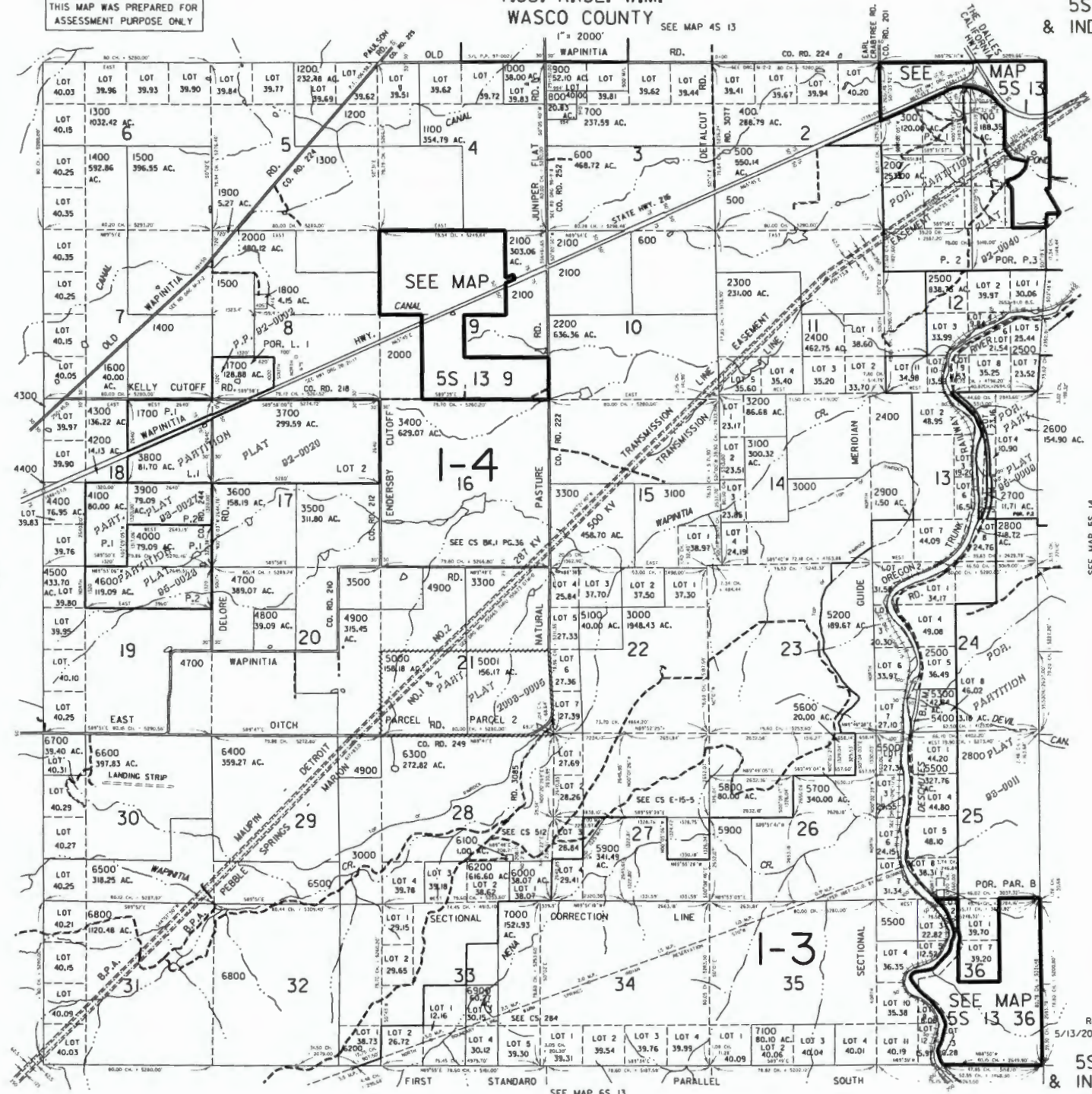


T.5S. R.13E. W.M.
WASCO COUNTY

5S 13
& INDEX

THIS MAP WAS PREPARED FOR
ASSESSMENT PURPOSE ONLY

1" = 2000' SEE MAP 45 13



SEE MAP 55 12

SEE MAP 55 14

Revised
5/13/2003, CS

5S 13
& INDEX

SEE MAP 65 13

RECEIVED

16-55-13E

JUN 12 1995

FEB 2 1996

WATER RESOURCES

SALEM, OREGON

CRP 87-96

T 999
H. CARTER
KELLY

NHEL

1
28.7

CRP 87-96

NHEL

RECEIVED

DEC 28 1994

WATER RESOURCES DEP.
SALEM, OREGON

2
173.7

Ref # 298
S: 1-1

NHEL

CRP 87-96

3
2E8

NHEL

4
32.4

WAPINITIA RD

CRP 87-96

NHEL

CRP 87-96

1
35.5

2
5.5 N

App on No. R-80425
No.

NATURAL PASTURE