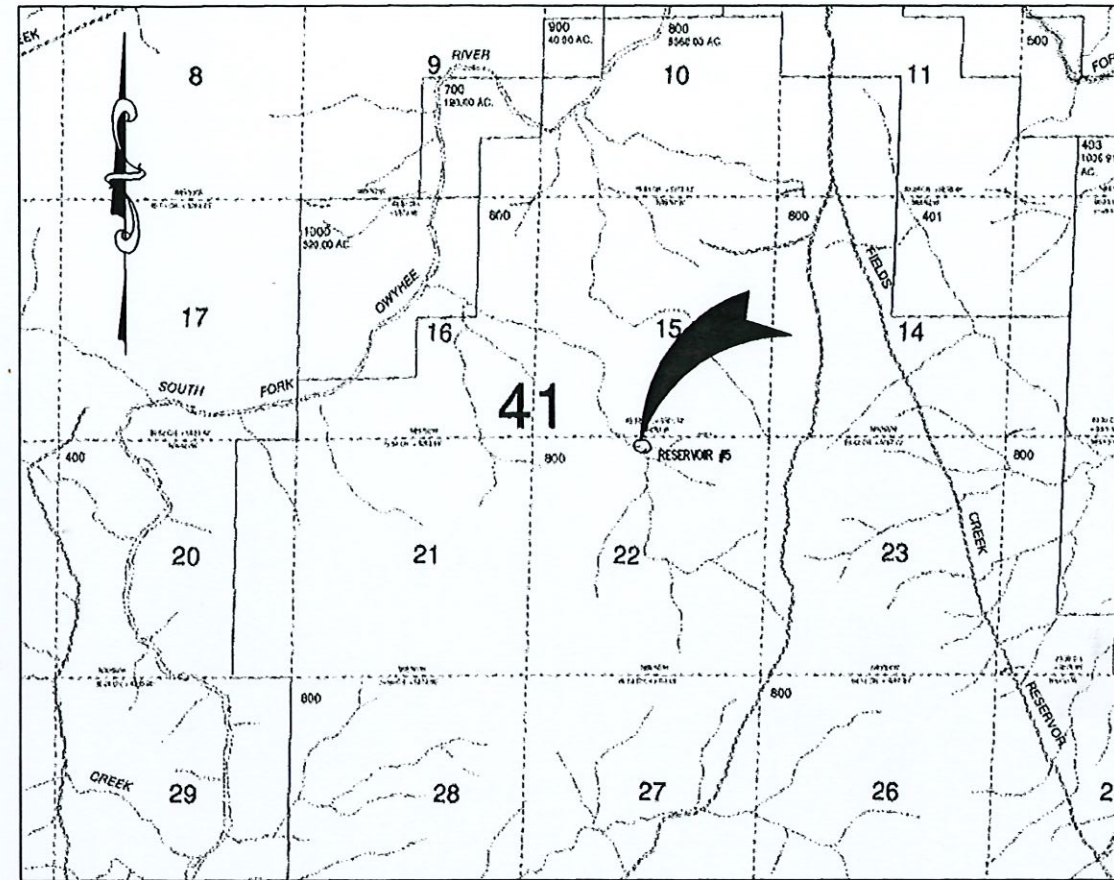
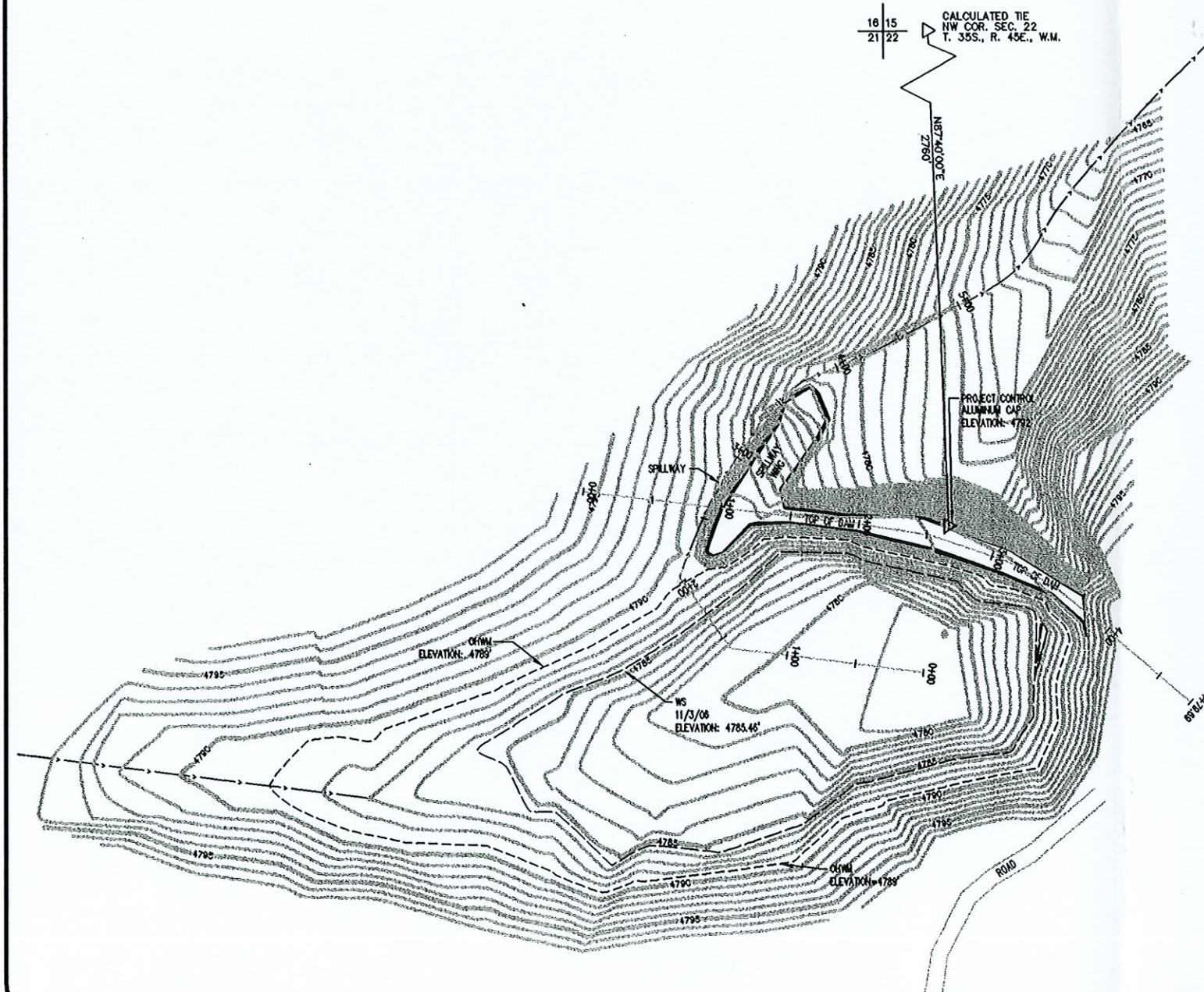


THE CONTROL MONUMENT FOR THE RESERVOIR BEARS N87°40'00"E 2760' FROM THE NW CORNER OF SECTION 22, TOWNSHIP 35 SOUTH, RANGE 45 EAST, W.M., MALHEUR COUNTY, OREGON



NE 1/4 NW 1/4 SEC. 22
T.35S., R.45E., W.M.
MALHEUR COUNTY
SCALE: 1" = 2000'

ENGINEER

DK & ASSOCIATES, INC.
ATTN: DAVID KARR
PO BOX 12766
SALEM, OR 97309

PH: 503.606.3006
FAX: 503.606.3007

OWNER

DEPARTMENT OF STATE LANDS
EASTERN REGION OFFICE
ATTN: RANDY WEST
1645 NE FORBES ROAD
SUITE 112
BEND, OR 97701

PH: 541.388.6456

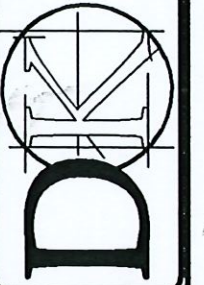
LEGEND

OHWM - OBSERVED HIGH WATER MARK
HWS - HIGH WATER SURFACE
WS - WATER SURFACE

SHEET INDEX

1 - COVER SHEET, PLAN VIEW, VICINITY MAP
2 - RESERVOIR PROFILES

DK & Associates
CIVIL ENGINEERING & LAND SURVEYING
PO BOX 12766
SALEM, OR 97309
PH: 503.606.3006
FAX: 503.606.3007



OREGON
MALHEUR COUNTY
ASBUILT SURVEY RESERVOIR 5 - APP. NO. _____
NE 1/4 OF NW 1/4 SEC. 22, T.35S., R.45E., W.M. - MALHEUR COUNTY



RECEIVED
DEC 26 2006
WATER RESOURCES DEPT
SALEM, OREGON

DATE:	11/29/06
SHEET	1 OF 2
JOB NUMBER	06-134