

Assignment Map

S20, T1S, R3E, Multnomah County
GR-915



1 IN = 600 FT
300



- NOTES:
- THIS MAP IS NOT INTENDED TO PROVIDE LEGAL DIMENSIONS OR LOCATIONS OF PROPERTY OWNERSHIP LINES.
 - PROPERTY LINES AND QUARTER-QUARTER LINES ARE BASED ON THE TAX ASSESSOR MAPS.
 - SEE ASSIGNMENT FOR MAPPING METHODS.



- LEGEND
- DONATION LAND CLAIM (DLC) CORNER
 - SECTION CORNER
 - DLC LINE
 - TAX LOT LINE
 - SECTION LINE
 - QUARTER-QUARTER LINE
 - LANDS BEING ASSIGNED
 - LANDS REMAINING
 - LANDS NOT IN ORIGINAL GR MAP

RECEIVED

AUG 25 2023

OWRD

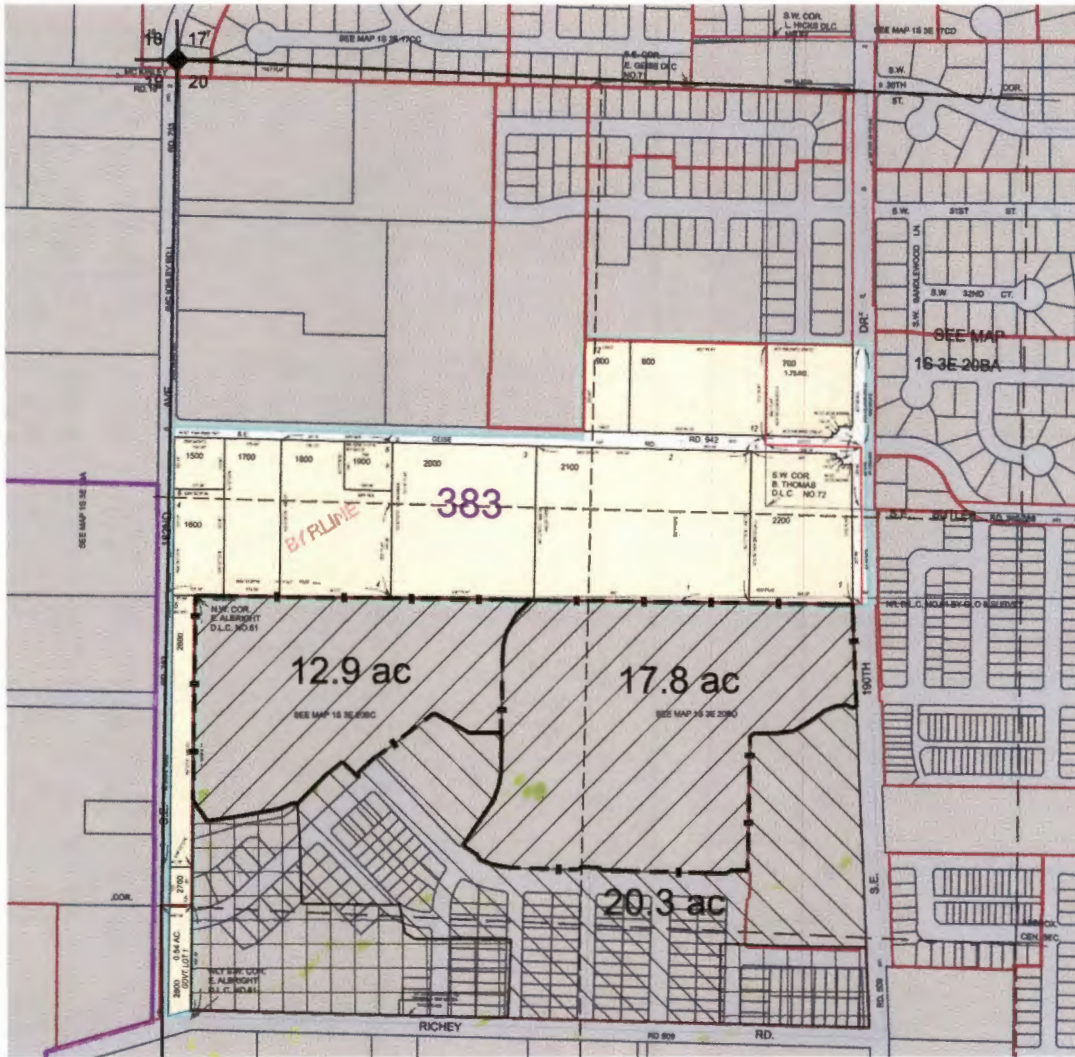
MAP BY:
ASPEN RURAL LAND CONSULTING
ERIC URSTADT, PE, PLS
971-250-1520
Aug 2023
C&JNursery-ECM 1K

Assignment Map

S20, T1S, R3E, Multnomah County
GR-915



1 IN = 600 FT
300



NOTES:

- THIS MAP IS NOT INTENDED TO PROVIDE LEGAL DIMENSIONS OR LOCATIONS OF PROPERTY OWNERSHIP LINES.
- PROPERTY LINES AND QUARTER-QUARTER LINES ARE BASED ON THE TAX ASSESSOR MAPS.
- SEE ASSIGNMENT FOR MAPPING METHODS.



RECEIVED
AUG 25 2023

OWRD

- LEGEND**
- DONATION LAND CLAIM (DLC) CORNER
 - SECTION CORNER
 - DLC LINE
 - TAX LOT LINE
 - SECTION LINE
 - QUARTER-QUARTER LINE
 - LANDS BEING ASSIGNED
 - LANDS REMAINING
 - LANDS NOT IN ORIGINAL GR MAP

MAP BY:
ASPEN RURAL LAND CONSULTING
 ERIC URSTADT, PE, PLS
 971-250-1520
 Aug 2023
 C&JNursery-ECM 1K