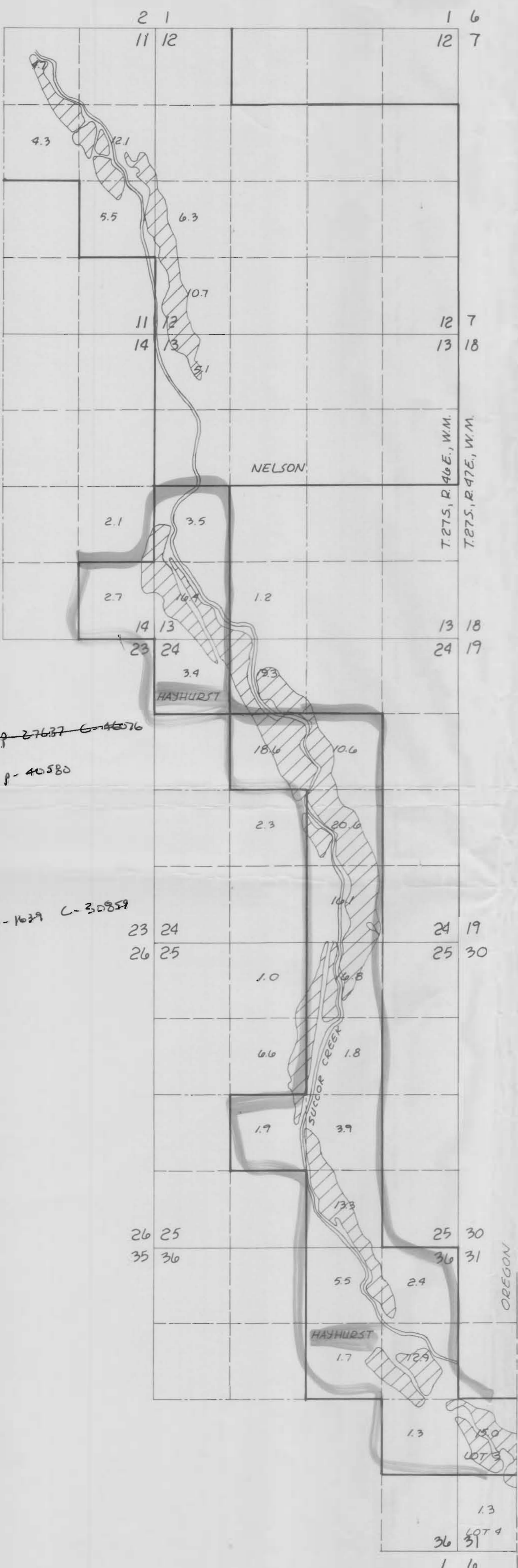
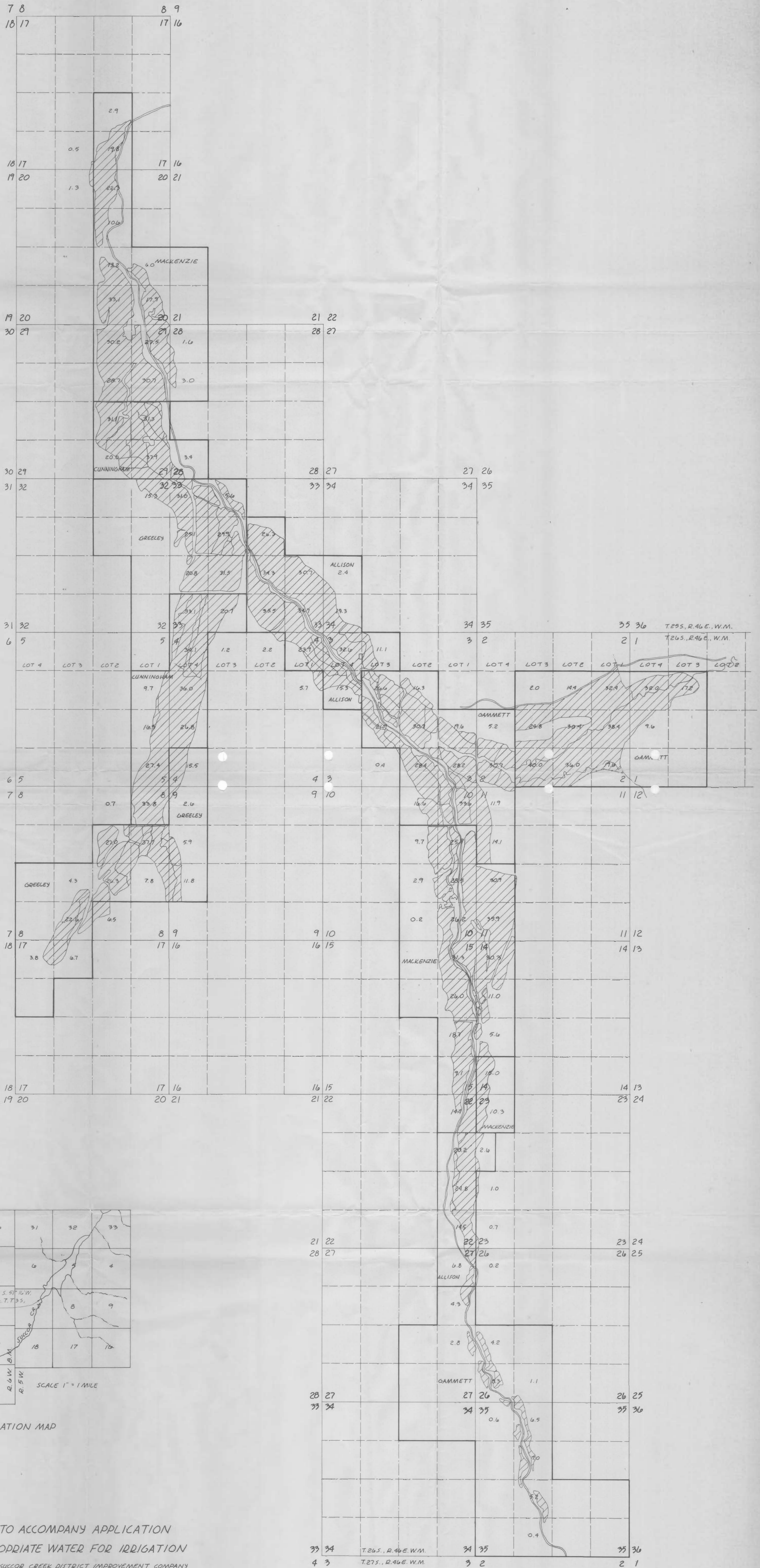
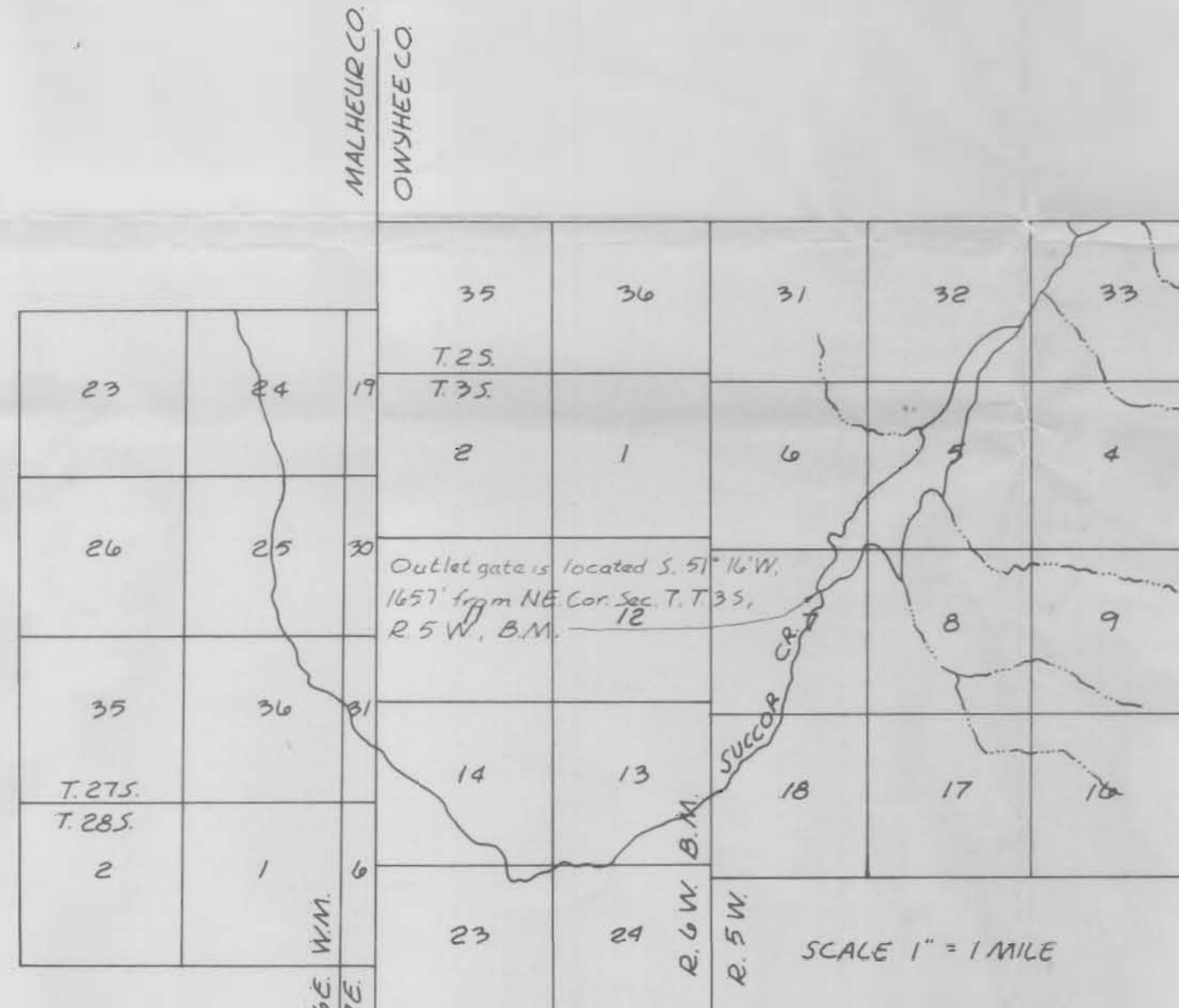


RECEIVED
DEC 28 1982
WATER RESOURCES DEPT.
SALMON, OREGON



A-36002 p-27627 C-40576
A-5184 p-40580
A-30002 p-1624 C-30857



DAM LOCATION MAP

MAP TO ACCOMPANY APPLICATION
TO APPROPRIATE WATER FOR IRRIGATION

APPLICANT: SUGOR CREEK DISTRICT IMPROVEMENT COMPANY
DRAWN AUGUST, 1975
REVISED MARCH 31, 1976
REVISED SEPTEMBER, 1981
REVISED SEPTEMBER, 1985
SCALE: 1" = 1/320'