

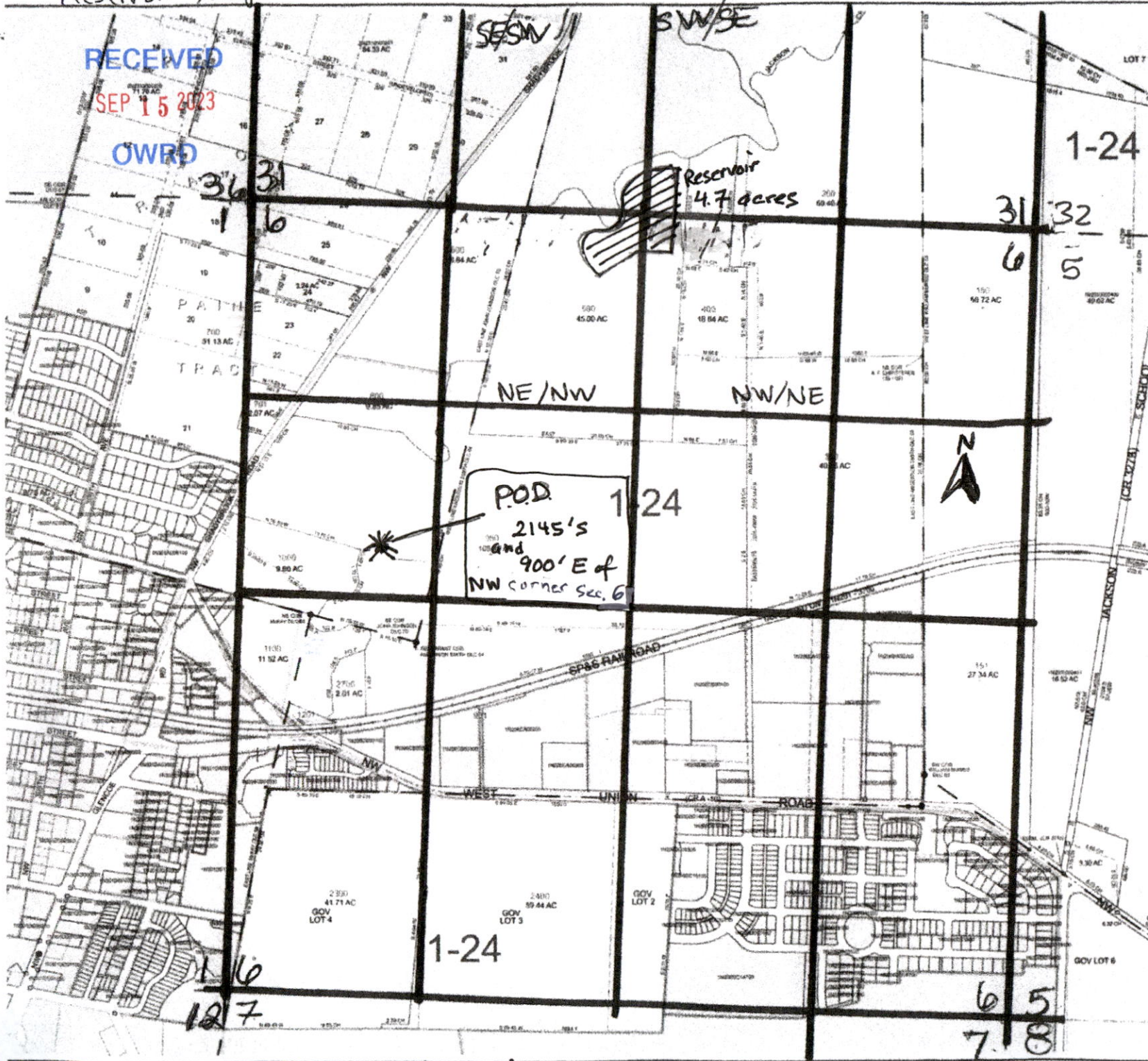
# Reservoir Map

1N206

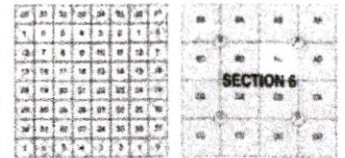
RECEIVED

SEP 15 2023

OWRD



WASHINGTON COUNTY OREGON  
SECTION 6 T1N R2W  
SCALE 1" = 400'



FOR ADDITIONAL MAPS VISIT OUR WEBSITE AT  
[www.co.washington.or.us](http://www.co.washington.or.us)

TR S Q/Q  
IN 2W 6 NE/NW

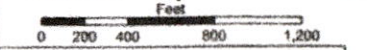
Tax Lot  
IN 26-00500

\* POD

Reservoir  
4.7 acres

Cancelled Taxlots For: 1N206  
1302, 1301, 1301, 1402, 1601, 1301, 3000, 1420, 1600, 2300A, 1303, 1304,  
2000, 2800, 1300, 1304, 1303, 1305, 1471, 1500, 1600, 1700, 800, 2000, 2000,  
100

\* POD = 2145's and  
900' E of NW  
corner of Section 6



PLOT DATE: 4/3/2023  
FOR ASSESSMENT PURPOSES  
ONLY - DO NOT RELY ON  
FOR OTHER USE

Map users are responsible for their own liability in using this map product. Any use for purposes other than those intended by the map creator is the user's responsibility. Please contact the appropriate agency for more information.

1N206