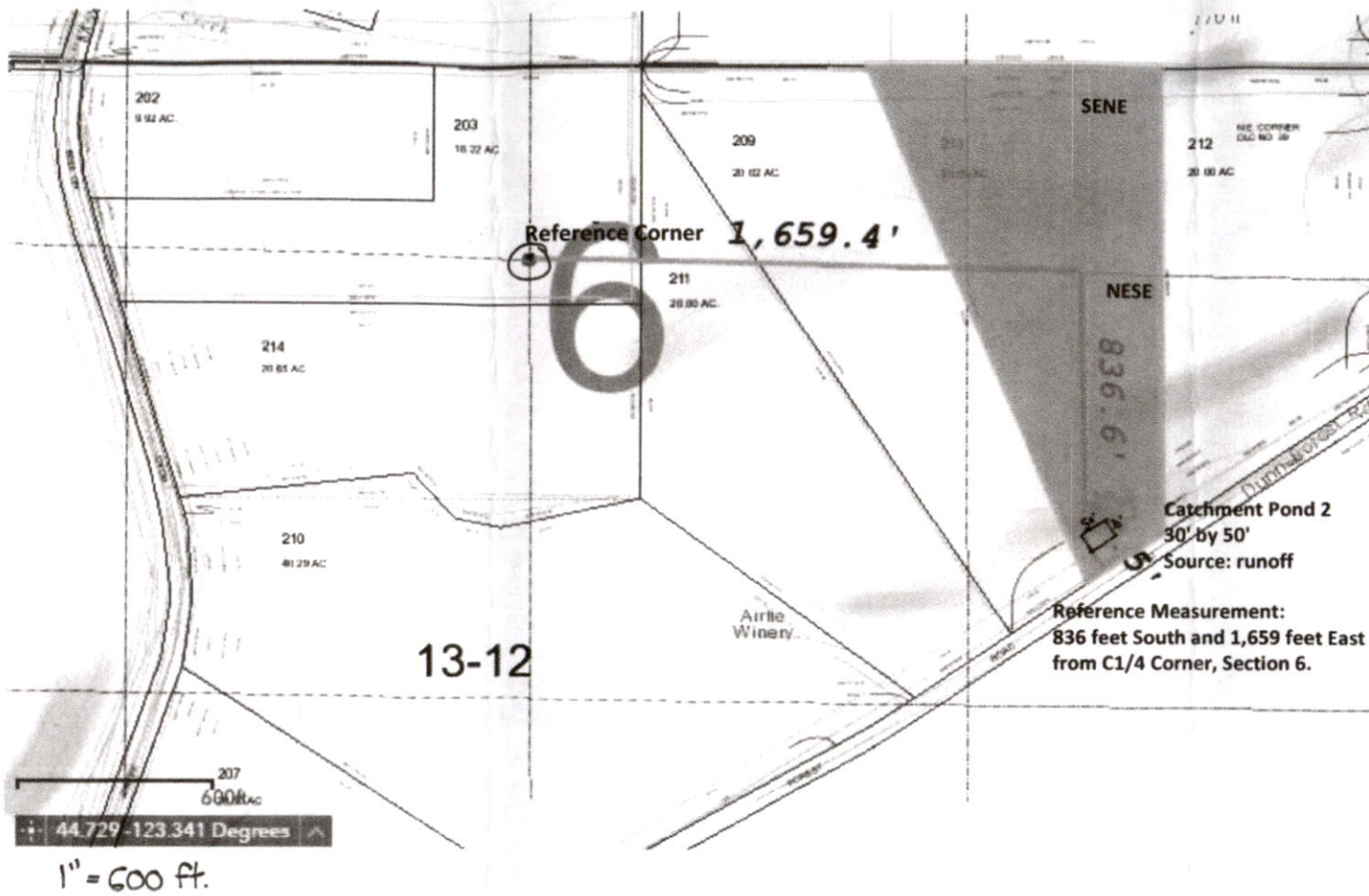


15155 Dunn Forest Road

T10S R5W S6 TL 213

CATCHMENT POND 2

NORTH ↑



Catchment Pond 2
30' by 50'
Source: runoff
Reference Measurement:
836 feet South and 1,659 feet East
from C1/4 Corner, Section 6.

88488-7

RECEIVED

OCT 10 2023

OWRD

RECEIVED BY OWRD

APR 06 2017

SALEM, OR

RECEIVED

OCT 30 2023

OWRD
SALEM, OREGON