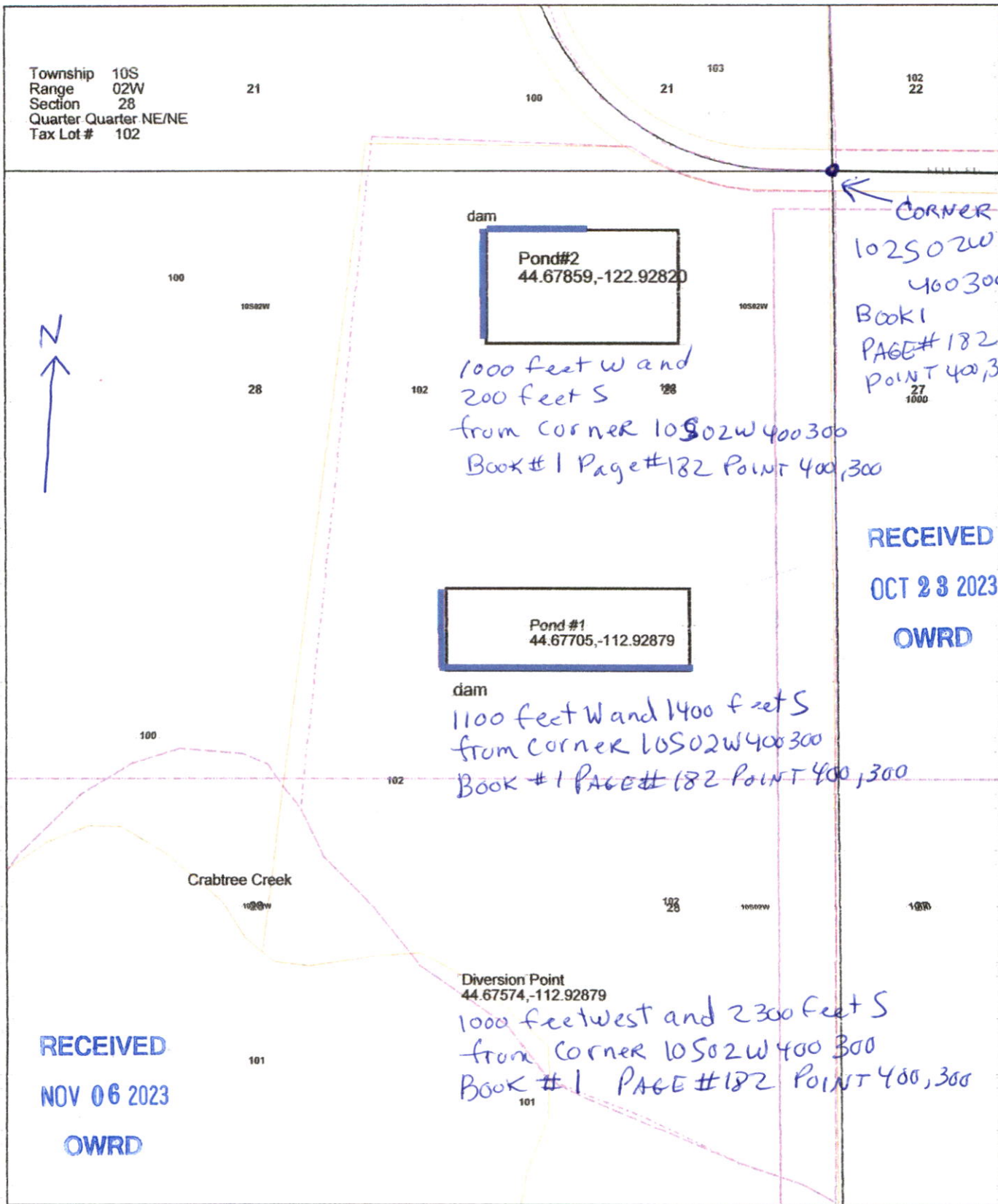


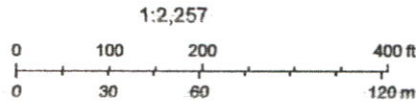
ArcGIS Web Map

Township 10S
 Range 02W
 Section 28
 Quarter Quarter NE/NE
 Tax Lot # 102



9/15/2023, 11:15:24 AM

- Townships
- County Boundary
- Surveys
- Section Corners
- Cities
- Highways
- Roads
- Sections
- Tax Lots



Linn County GIS, County of Linn, Bureau of Land Management, State of Oregon, State of Oregon DOT, State of Oregon GEO, Esri Canada, Esri, HERE, Garmin, INCREMENT P, USGS, METI/NASA, EPA, USDA