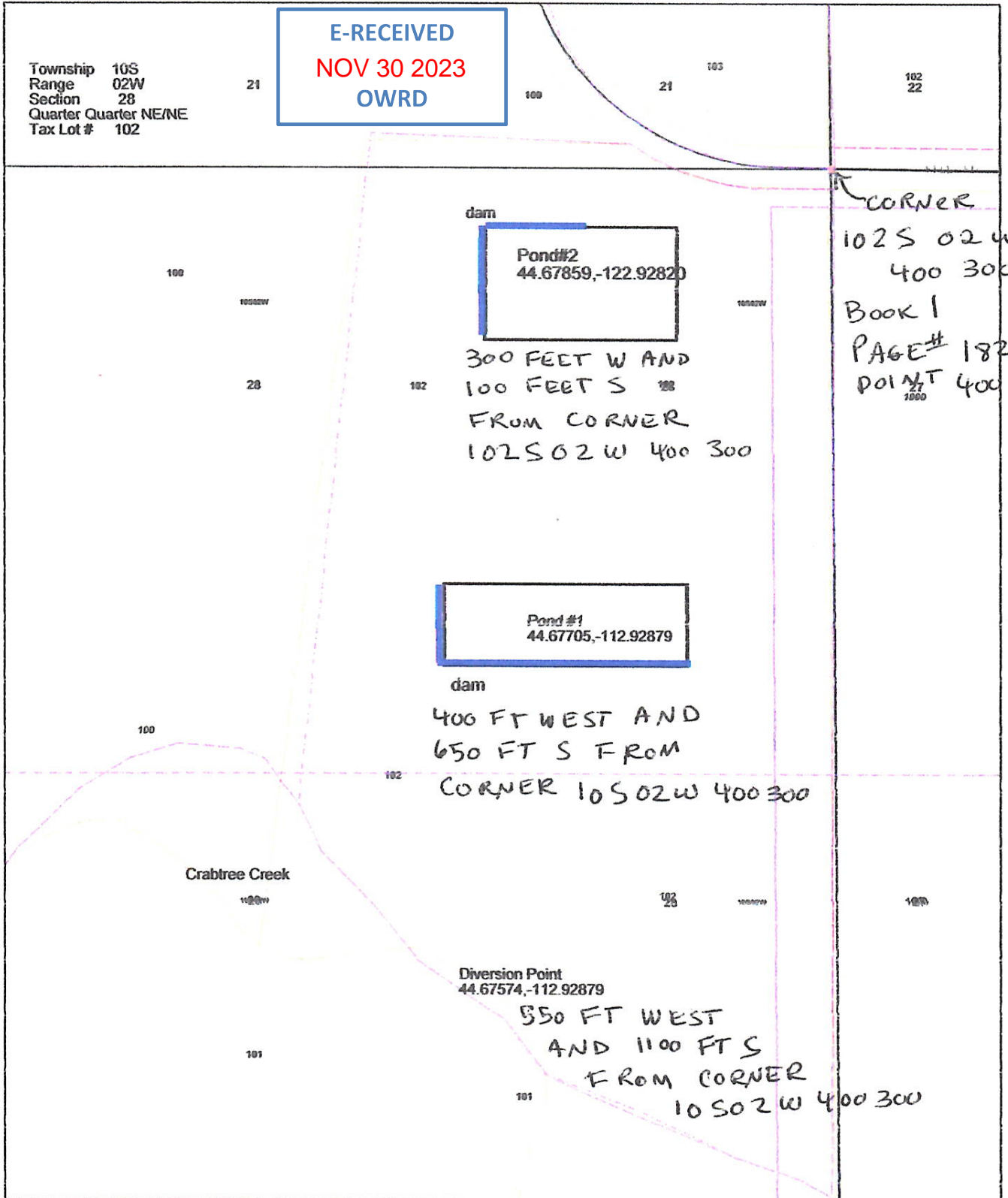


ArcGIS Web Map



E-RECEIVED
NOV 30 2023
OWRD

Township 10S
Range 02W
Section 28
Quarter Quarter NE/NE
Tax Lot # 102

Pond #2
44.67859, -122.92820

300 FEET W AND
100 FEET S
FROM CORNER
102S 02W 400 300

Pond #1
44.67705, -112.92879

dam
400 FT WEST AND
650 FT S FROM
CORNER 10S 02W 400 300

Diversion Point
44.67574, -112.92879
550 FT WEST
AND 1100 FT S
FROM CORNER
10S 02W 400 300

CORNER
102S 02W
400 300
Book 1
PAGE # 182
POINT 400

9/15/2023, 11:15:24 AM

- Townships
- County Boundary
- Surveys
- Section Corners
- Cities
- Highways
- Roads
- Sections
- Tax Lots

SCALE
1 inch =
200 FT



Linn County
State of Oregon
Canada, Esri,
EPA, USDA