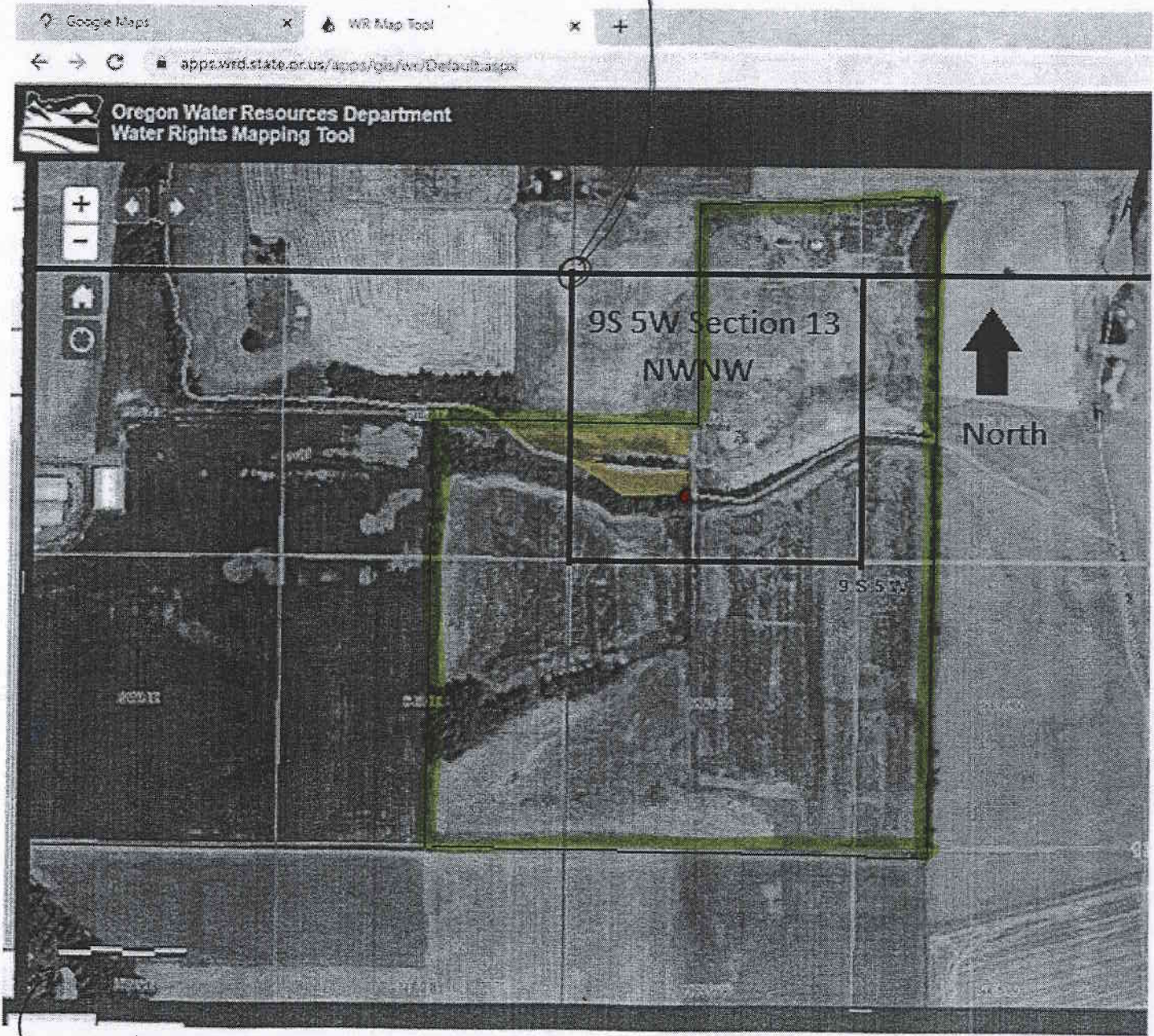


E-RECEIVED
 NOV 30 2023
 OWRD

NWNW CORNER
 OF 9.5. 13 $\frac{11}{14} \frac{12}{13}$



- RESERVOIR
- TAX LOT 100 BOUNDARY
- DAM POINT OF DIVERSION/
 COLVERT/OUTLET
 LOCATED 1000 FT SOUTH
 546 FT EAST
 FROM NWNW CORNER
 OF 9S5W SECTION 13
- PUMP LOCATED ON DAM -
 INTAKE MAY BE UP TO 10 FEET
 SOUTH

