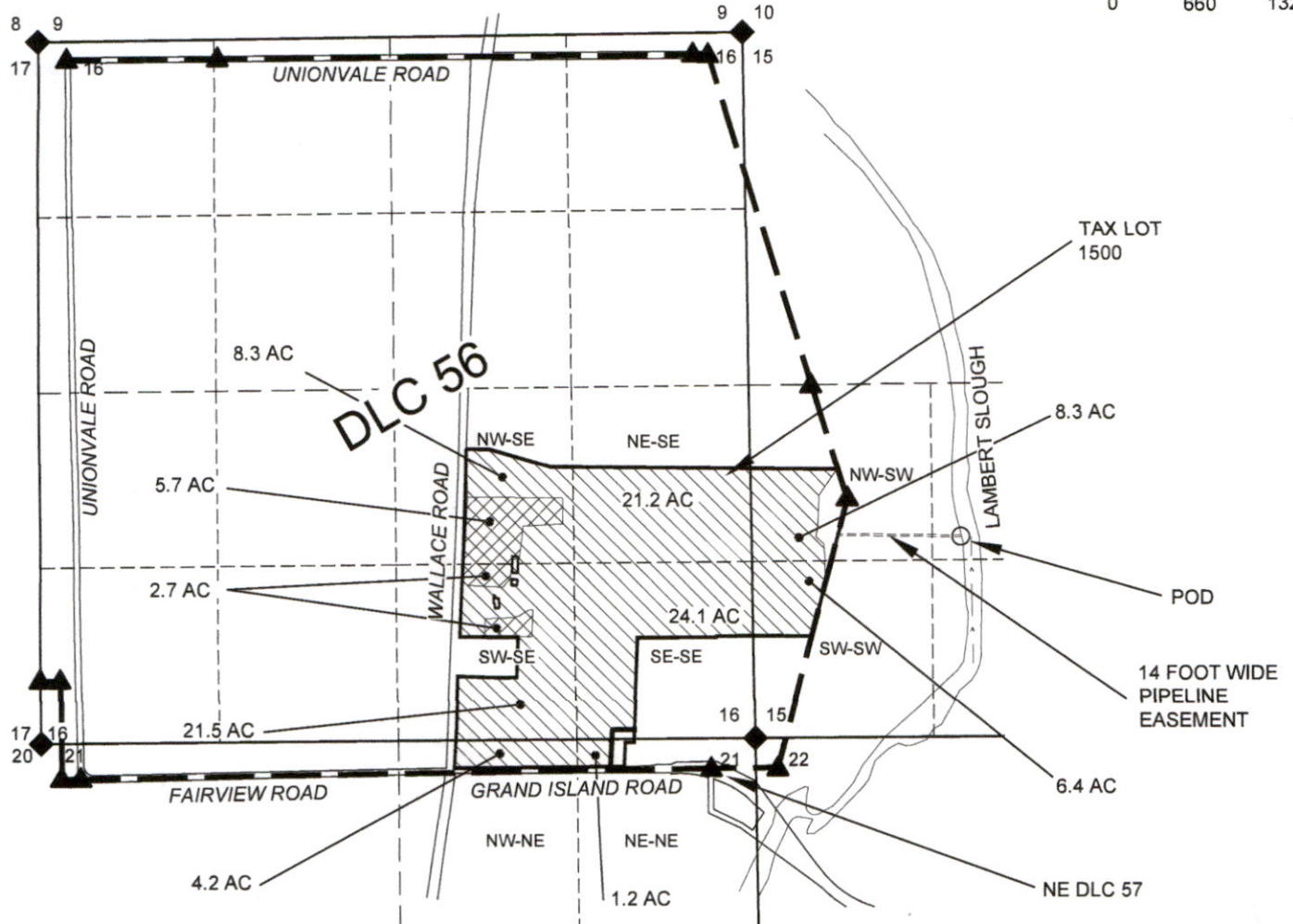
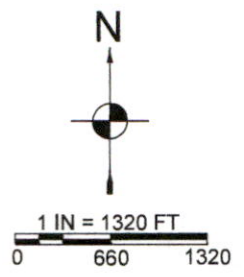


# Map For Surface Water Application

## Sections 15, 16, & 21, T5S, R3W, Yamhill County



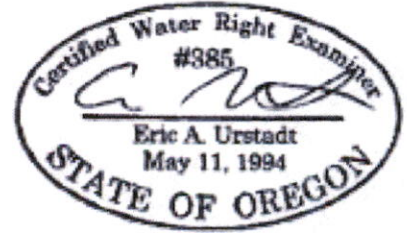
THE POD IS 1715' NORTH AND 1860' EAST FROM THE NE CORNER DLC 57.

- NOTES:
- THIS MAP IS NOT INTENDED TO PROVIDE LEGAL DIMENSIONS OR LOCATIONS OF PROPERTY OWNERSHIP LINES.
  - PROPERTY LINES ARE BASED ON COUNTY SURVEY CS-11487. SECTION QUARTER-QUARTER, AND DONATION LAND CLAIM LINES ARE BASED ON THE TAX ASSESSOR MAP FOR SECTION 16, T5S, R3W.

**LEGEND**

- DONATION LAND CLAIM (DLC) CORNER
- SECTION CORNER
- POINT OF DIVERSION (POD)
- STREAM OR SURFACE DRAINAGE
- TAX LOT LINE
- SECTION LINE
- QUARTER-QUARTER LINE
- DLC LINES
- IRRIGATION
- SUPPL (TO 85048)

**RECEIVED**  
**NOV 30 2023**  
**OWRD**



Exp. Jun 2024

MAP BY:  
**ASPEN RURAL LAND CONSULTING**  
ERIC URSTADT, PE, PLS  
971-250-1520  
OCT 2023  
WVL-SBKing3E