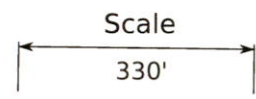


Zachary Welch
**Mandolin Creek Pond 1,
 Pond 2, and Pond 3
 Exhibit Map**

Oct 8, 2023

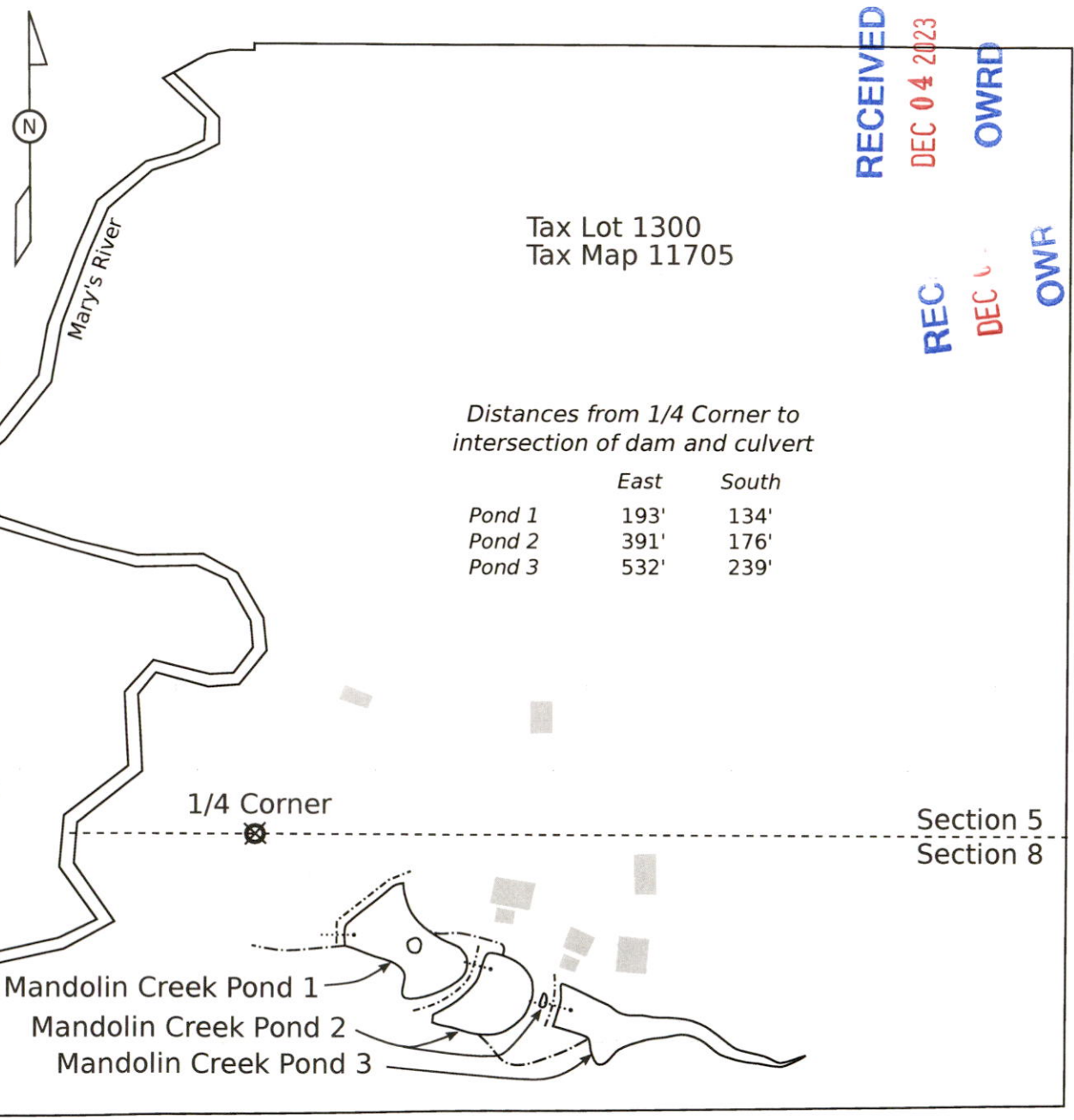
Taxlot 1300, Map 11705

Reservoirs located in
 the NW 1/4 of the NE 1/4 of Section 8
 Township 11 South, Range 7 West, W.M.
 Benton County, Oregon



Legend

- Taxlot Boundary
- - - - Section Boundary
- · - · - Dam
- · · · · 8" culvert/standpipe
- - - - Emergency spillway
- ⊗ 1/4 Corner Monument
- Buildings



Distances from 1/4 Corner to
 intersection of dam and culvert

	East	South
Pond 1	193'	134'
Pond 2	391'	176'
Pond 3	532'	239'

RECEIVED
 DEC 04 2023
 OWRD

REC
 DEC 1 2023
 OWR

Section 5
 Section 8

Mandolin Creek Pond 1
 Mandolin Creek Pond 2
 Mandolin Creek Pond 3