

SEC. 33 T. 8S. R. 4W. W.M.
Polk County
1" = 400'

TAXATION PURPOSES ONLY

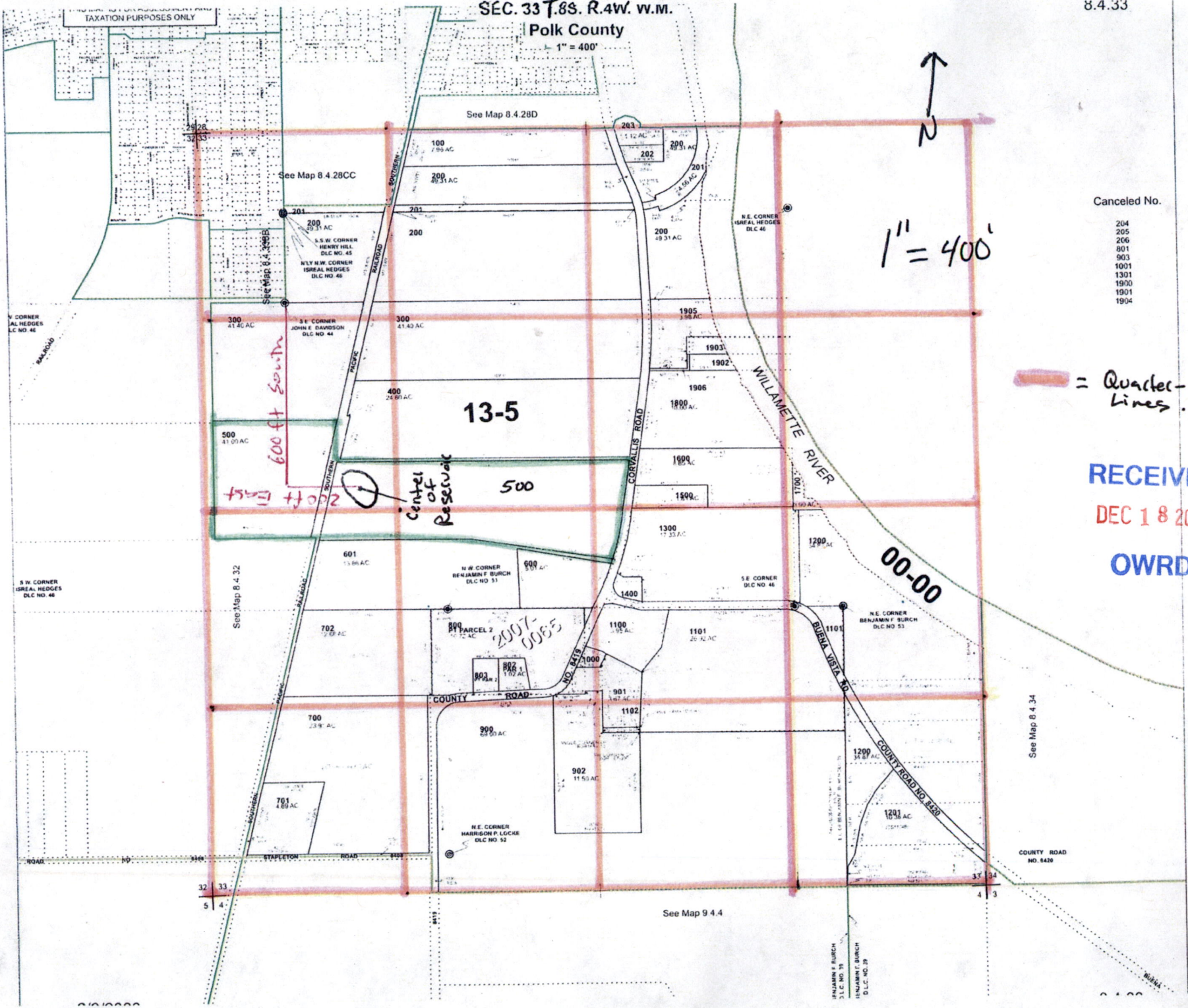


1" = 400'

- Canceled No.
- 204
 - 205
 - 206
 - 801
 - 903
 - 1001
 - 1301
 - 1900
 - 1901
 - 1904

= Quarter-Quart Lines.

RECEIVED
DEC 18 2023
OWRD



600 ft South

150 ft East

13-5

500

Center of Reservoir

2007-0085

00-00

See Map 9 4.4

See Map 8.4.34

S.W. CORNER
ISREAL HEDGES
D.L.C. NO. 46

S.W. CORNER
ISREAL HEDGES
D.L.C. NO. 46

S.S.W. CORNER
HENRY HILL
D.L.C. NO. 45
N.E. W. CORNER
ISREAL HEDGES
D.L.C. NO. 46

S.E. CORNER
JOHN E. DAVIDSON
D.L.C. NO. 44

N.E. CORNER
BENJAMIN F. BURCH
D.L.C. NO. 51

N.E. CORNER
ISREAL HEDGES
D.L.C. NO. 46

WILLAMETTE RIVER

BUREA VISTA RD

COUNTY ROAD NO. 430

BENJAMIN F. BURCH
D.L.C. NO. 51

BENJAMIN F. BURCH
D.L.C. NO. 51

COUNTY ROAD
NO. 8420