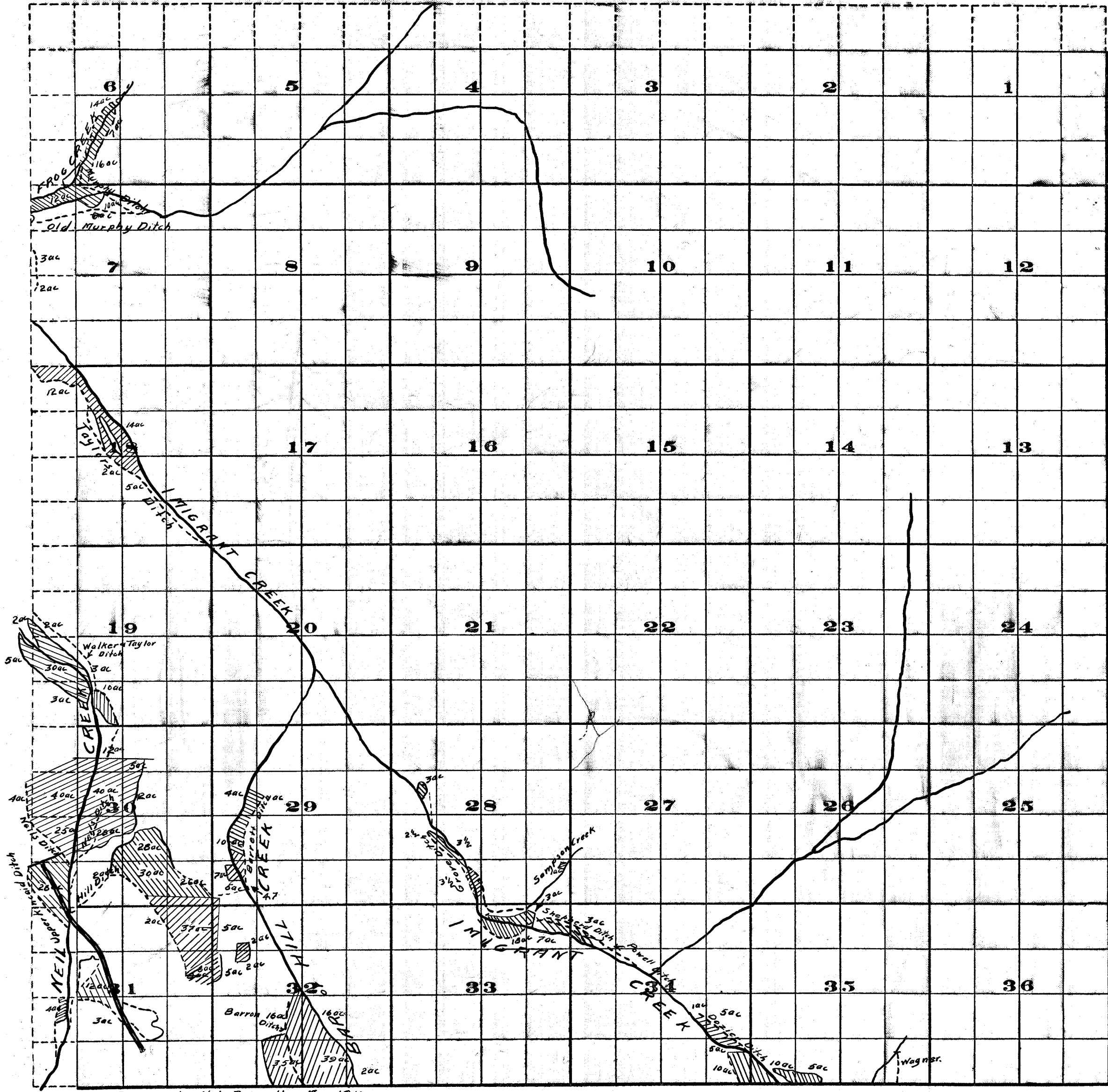


Township 39S, Range 2E.



Survey by H.K. Dannelly May 1910
 Scale of Feet.
 M.D.
 D.F.M. 11/2-11

FROM OFFICE OF THE STATE ENGINEER SALEM, OREGON

Adjudication
 Rogue River and Tributaries
 John H. Lewis State Engr.

Examined Sept. 18, 1911.