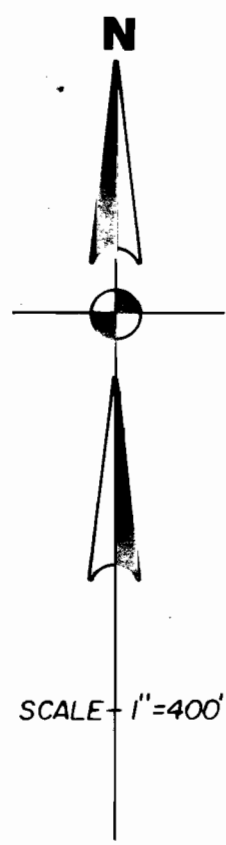


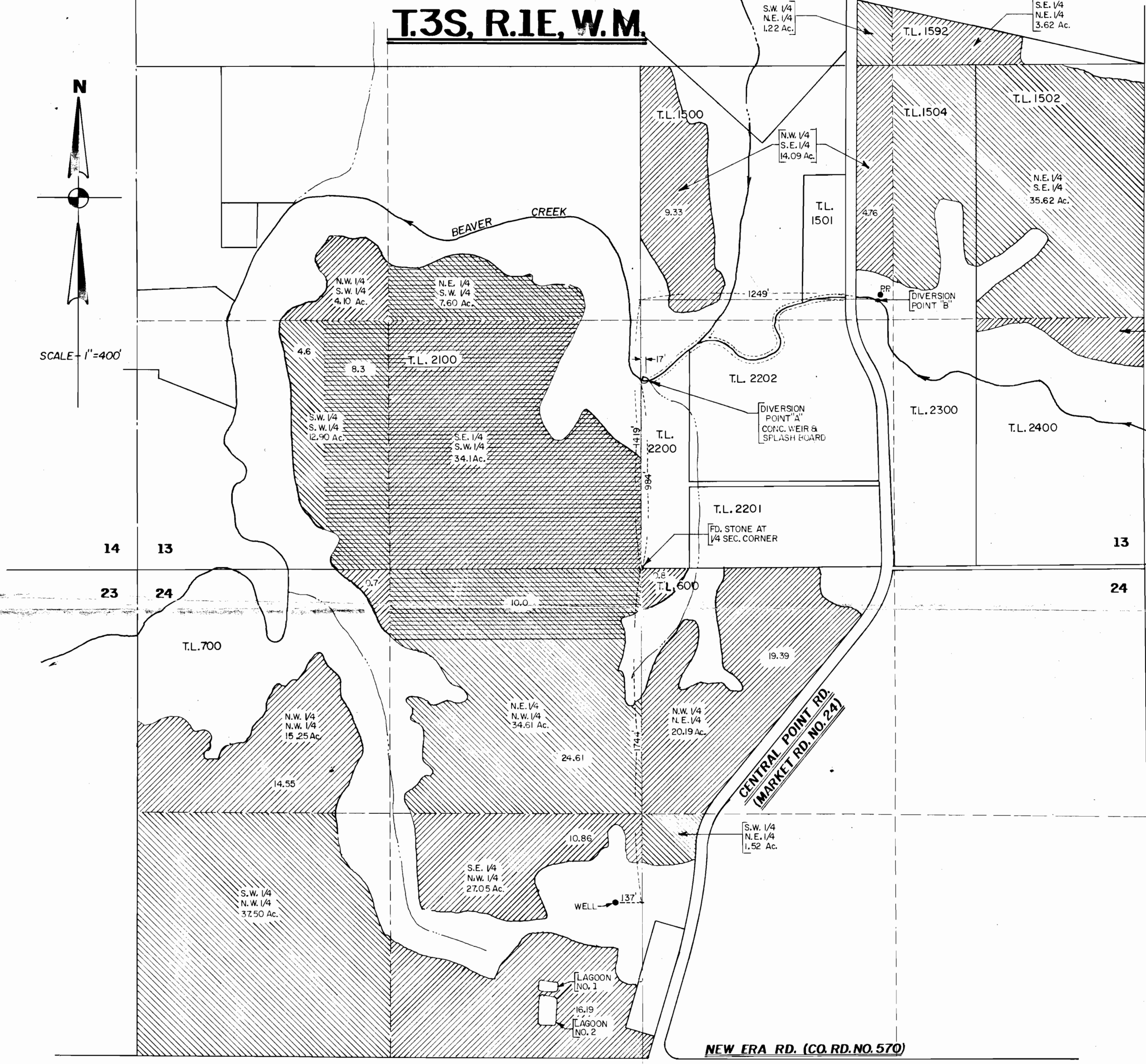
T.3S, R.1E, W.M.



LEGEND

PERMIT NO. 11975 NOV. 27, 1935

INTERMITTENT IMPOUNDMENT



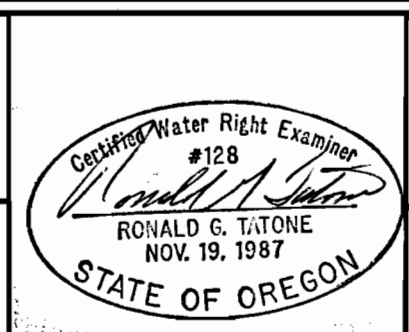
SECTION 13, T.3S, R.1E, W.M.	
S.E. 1/4 - N.E. 1/4	3.62 Ac.
S.W. 1/4 - N.E. 1/4	1.22 Ac.
N.W. 1/4 - S.W. 1/4	4.10 Ac.
N.W. 1/4 - S.E. 1/4	14.09 Ac.
N.E. 1/4 - S.E. 1/4	35.62 Ac.
S.E. 1/4 - S.E. 1/4	3.05 Ac.
S.W. 1/4 - S.W. 1/4	4.60 Ac.
SUB TOTAL	66.30 Ac.
SECTION 24, T.3S, R.1E, W.M.	
N.W. 1/4 - N.E. 1/4	20.19 Ac.
N.E. 1/4 - N.W. 1/4	24.61 Ac.
N.W. 1/4 - N.W. 1/4	15.25 Ac.
S.W. 1/4 - N.W. 1/4	37.50 Ac.
S.E. 1/4 - N.W. 1/4	27.05 Ac.
S.W. 1/4 - N.E. 1/4	1.52 Ac.
SUB TOTAL	126.12 Ac.
TOTAL AREA	192.42 Ac.

Application No. 70621, R-70622, R-70623
 Permit No. R11550
 permit R11595

DRAWN: R.R.
 SCALE: 1" = 400'

CHECKED: R.G.T.
 DATE: 8-16-90

ZAROSINSKI-TATONE ENGINEERS, INC.
 3737 S. E. EIGHTH AVE. PORTLAND, ORE. 97202
 PH: (503) 235-8795



STAEHEL Y BRO'S DAIRY

SURFACE WATER, GROUND WATER AND RESERVOIR APPLICATION MAP

1592-1

RECEIVED
 SEP - 5 1990
 WATER RESOURCES DEPT.
 SALEM, OREGON