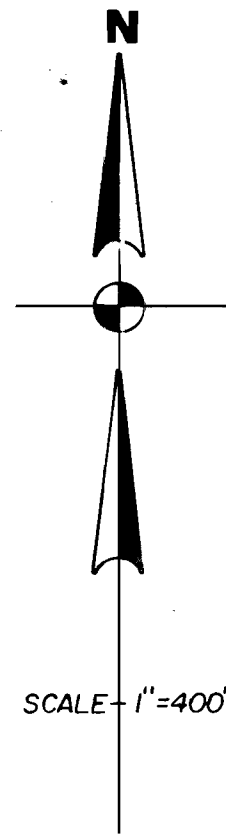
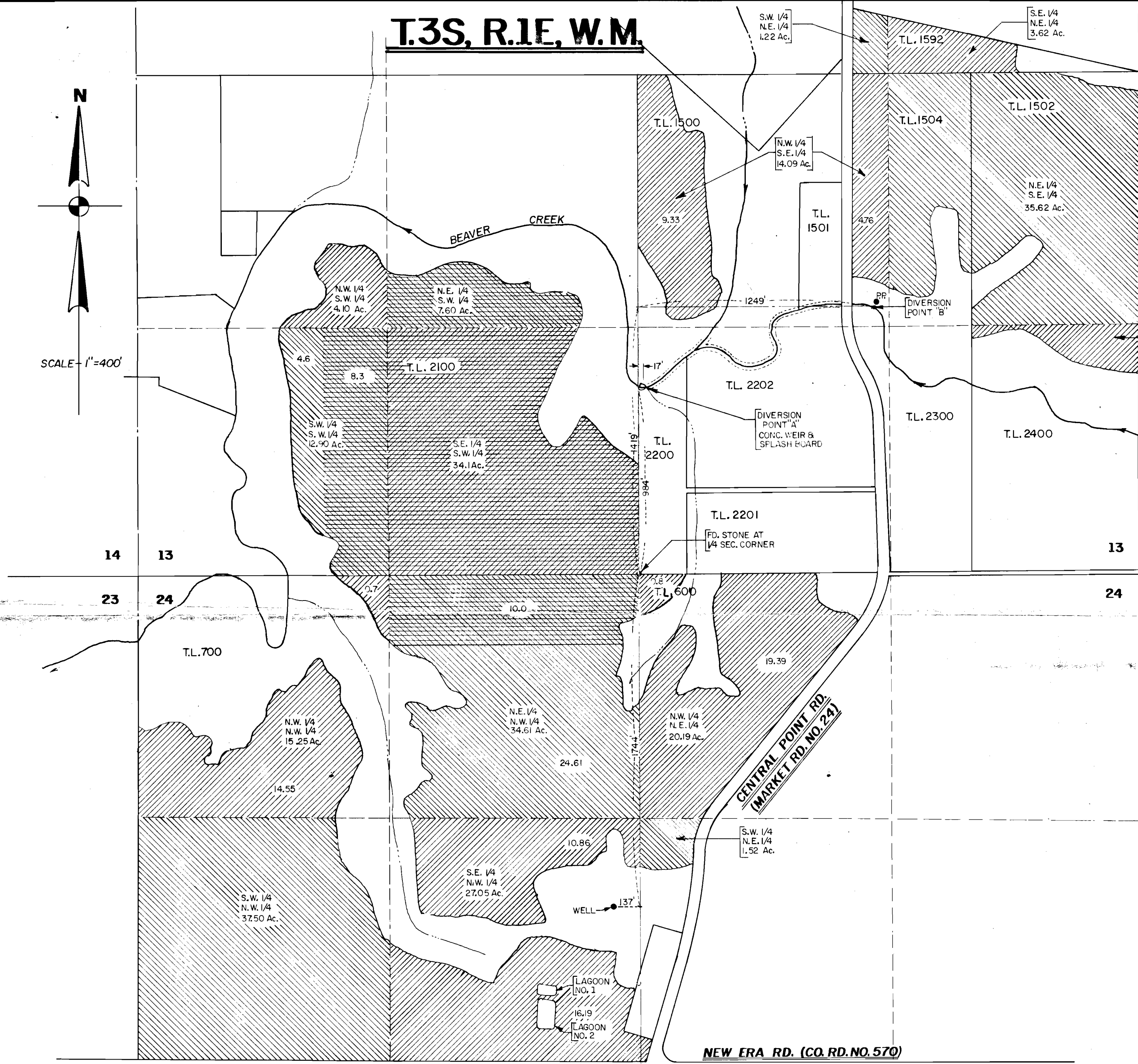


T.3S, R.1E, W.M.



SCALE - 1" = 400'



LEGEND

- PERMIT NO. 11975 NOV. 27, 1935
- INTERMITTENT IMPOUNDMENT

SECTION 13, T.3S, R.1E, W.M.

S.E. 1/4 - N.E. 1/4	3.62 Ac.
S.W. 1/4 - N.E. 1/4	1.22 Ac.
N.W. 1/4 - S.W. 1/4	4.10 Ac.
N.W. 1/4 - S.E. 1/4	14.09 Ac.
N.E. 1/4 - S.E. 1/4	35.62 Ac.
S.E. 1/4 - S.E. 1/4	3.05 Ac.
S.W. 1/4 - S.W. 1/4	4.60 Ac.
SUB TOTAL	66.30 Ac.

SECTION 24, T.3S, R.1E, W.M.

N.W. 1/4 - N.E. 1/4	20.19 Ac.
N.E. 1/4 - N.W. 1/4	24.61 Ac.
N.W. 1/4 - N.W. 1/4	15.25 Ac.
S.W. 1/4 - N.W. 1/4	37.50 Ac.
S.E. 1/4 - N.W. 1/4	27.05 Ac.
S.W. 1/4 - N.E. 1/4	1.52 Ac.
SUB TOTAL	126.12 Ac.

TOTAL AREA 192.42 Ac.

RECEIVED

SEP - 5 1990

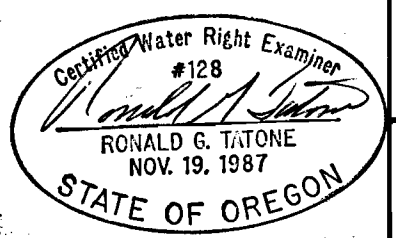
WATER RESOURCES DEPT.
SALEM, OREGON

Application No. 70621, R-70622, R-70623
Permit No. R11550
permit R11595

DRAWN: R.R.
SCALE: 1" = 400'

CHECKED: R.G.T.
DATE: 8-16-90

ZAROSINSKI-TATONE ENGINEERS, INC.
3737 S. E. EIGHTH AVE. PORTLAND, ORE. 97202
PH: (503) 235-8795



STAEHEL Y BRO'S DAIRY

SURFACE WATER, GROUND WATER AND RESERVOIR APPLICATION MAP

1592-1