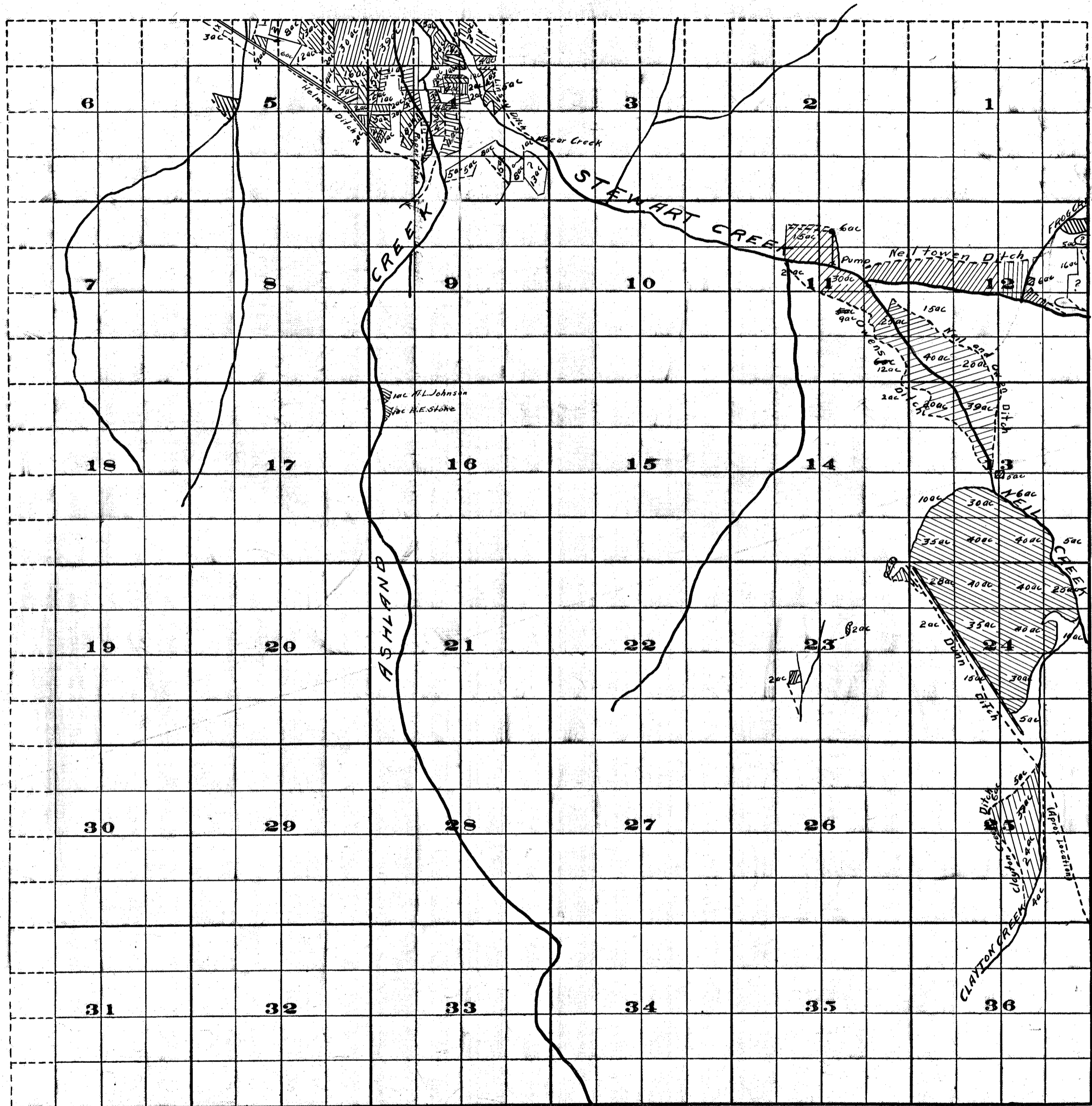


Township 39S., Range 1E.



Survey by H.K. Donnelly May 1910 and H.D. Farmer July 1911.

FROM OFFICE OF THE STATE ENGINEER, SALEM, OREGON

M.D.
D.F.M. 1117-11

Scale of Feet.

Adjudication

Rogue River and Tributaries

John H. Lewis State Eng'r

Examined Sept. 18, 1911