

THIS MAP WAS PREPARED FOR  
ASSESSMENT PURPOSE ONLY

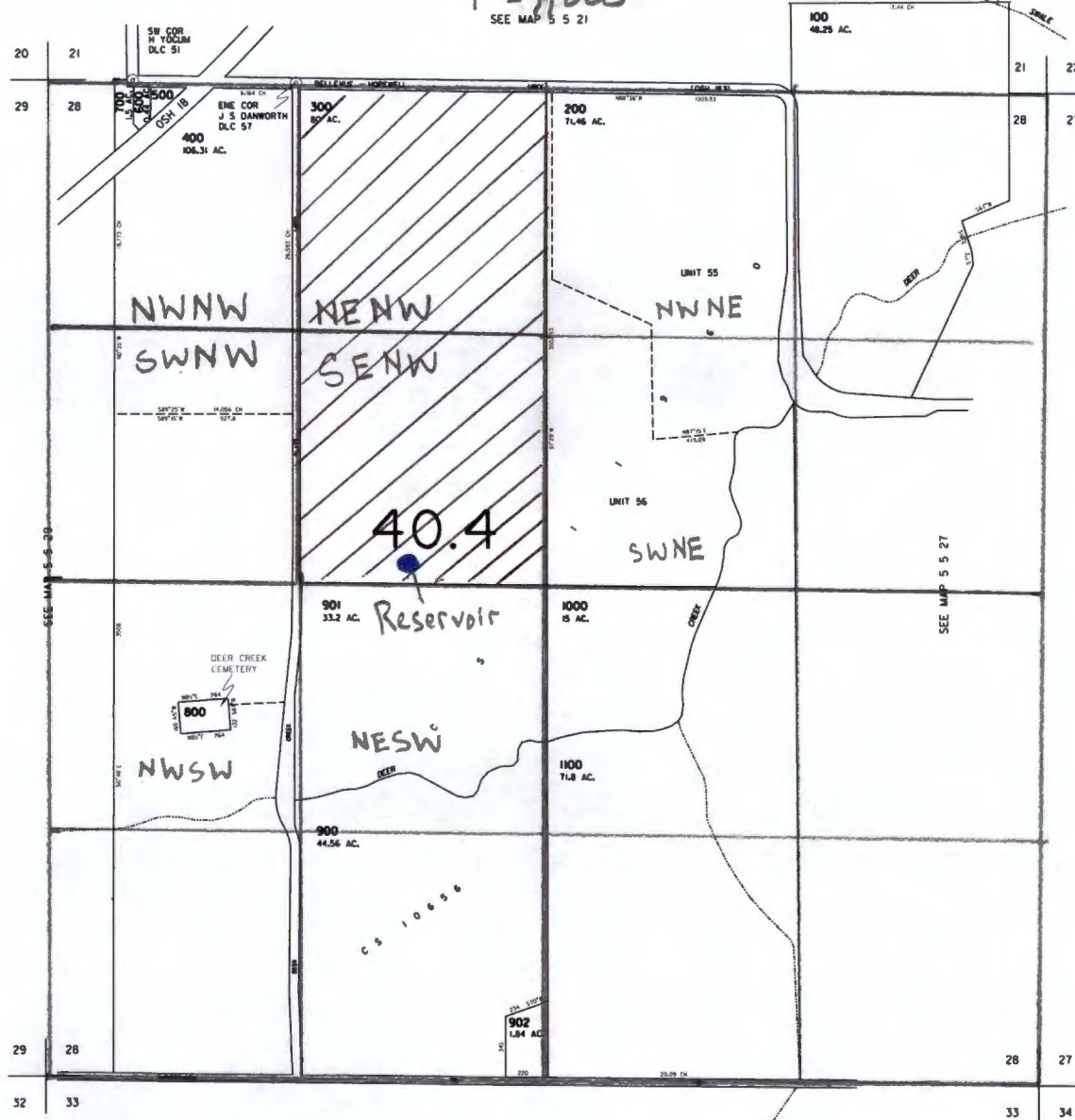
SECTION 28 T5S R5W W.M.  
YAMHILL COUNTY

5 5 28

1" = 1,000'  
SEE MAP 5 5 21

CANCELLED

Proposed Reservoir located  
720 Feet West and  
120 Feet North from the  
center of Section 28



REVISED 5-28-02 CT

SEE MAP 5 5 33

5 5 28

RECEIVED

JAN 02 2024

OWRD