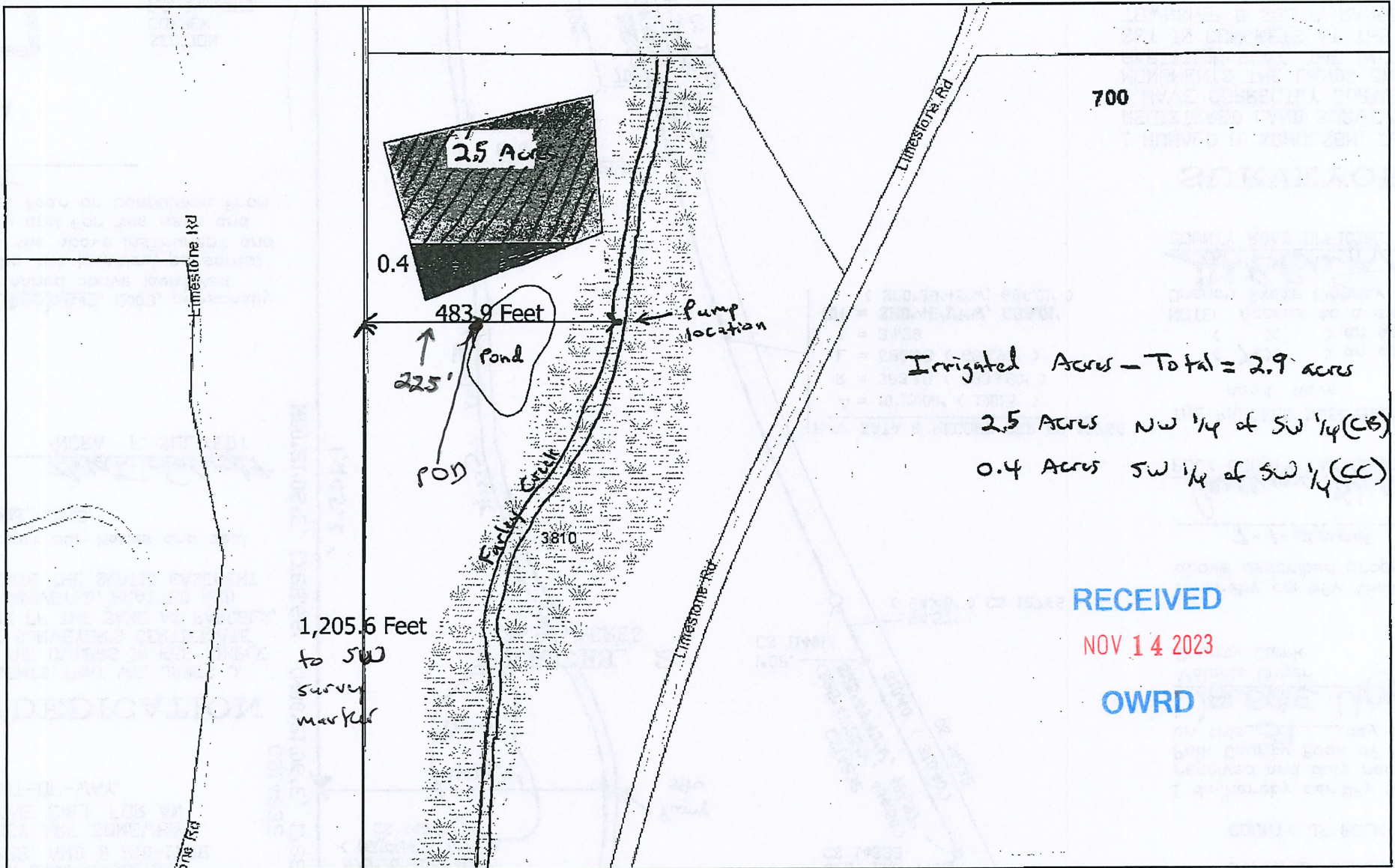
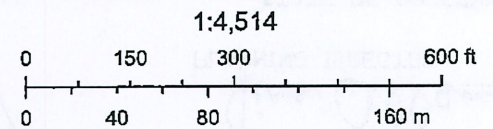


# ArcGIS Web Map



5/21/2021, 10:14:29 AM

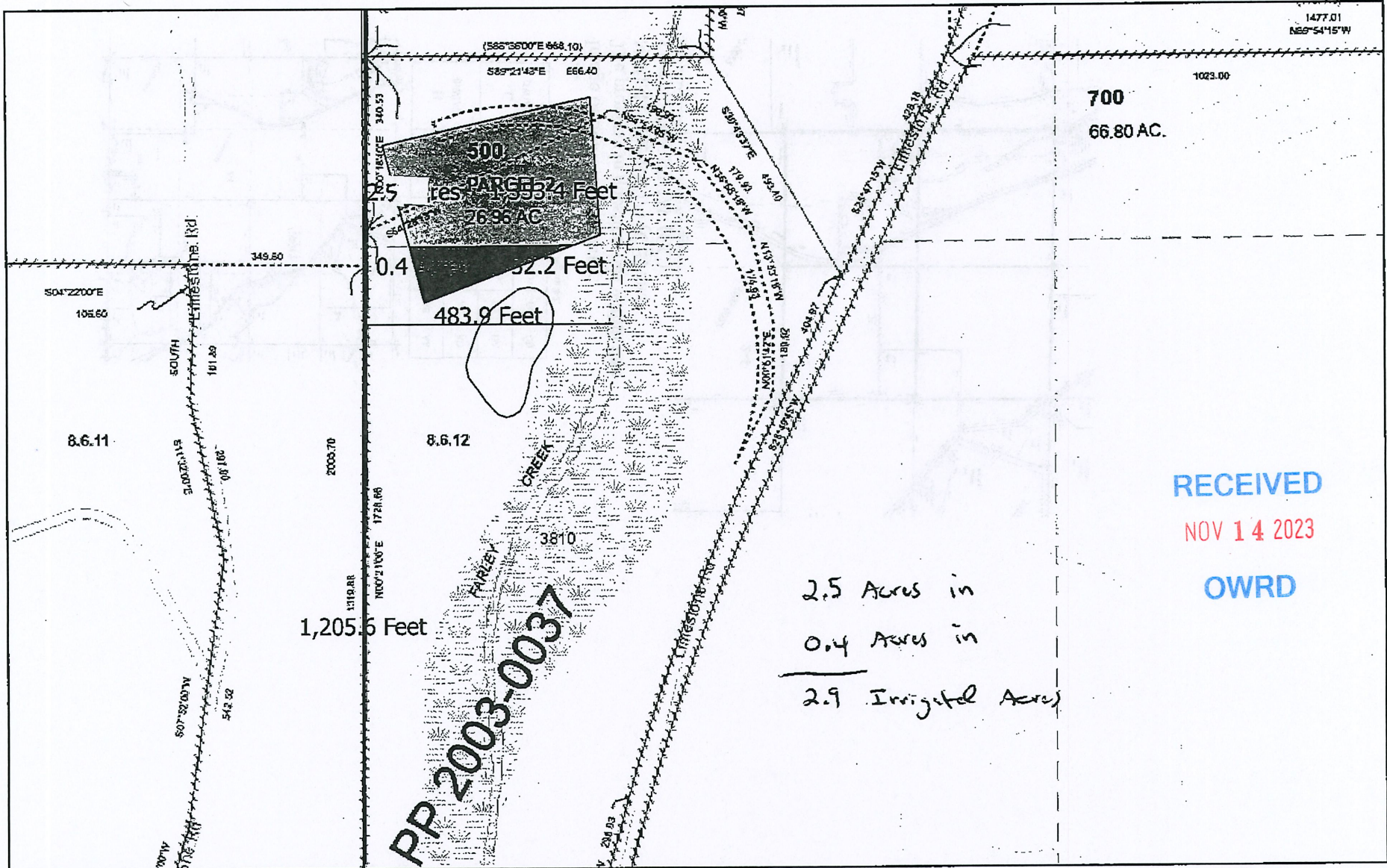
- Taxlots
- Section
- Township / Range Anno
- Township / Range
- Dallas Addresses
- Salem Addresses



Bureau of Land Management, State of Oregon, State of Oregon DOT, State

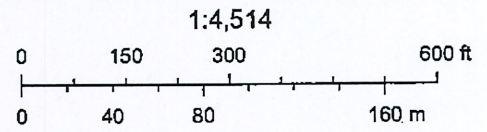
Polk County GIS

# ArcGIS Web Map



5/21/2021, 10:09:49 AM

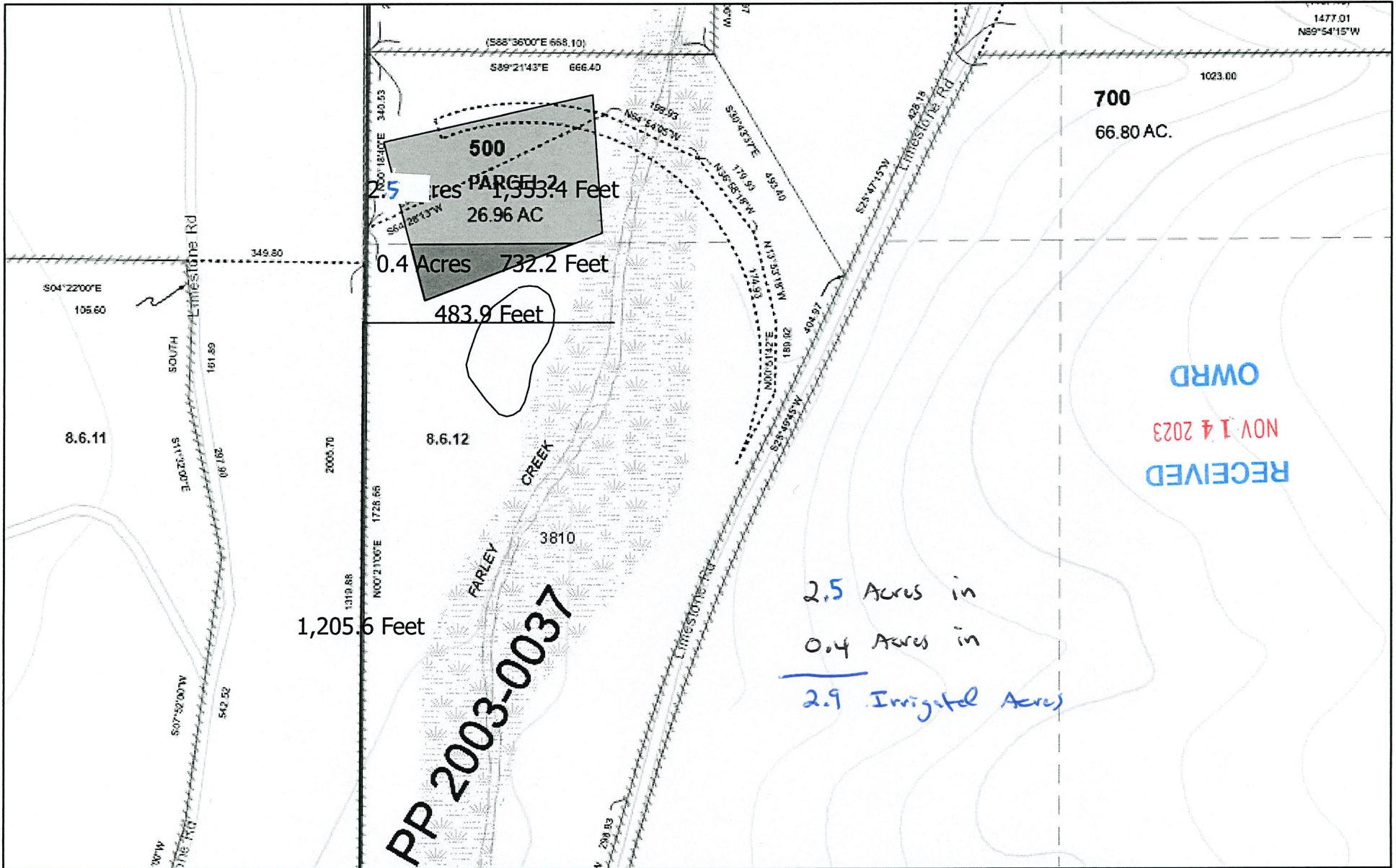
- |                   |                     |                         |                     |
|-------------------|---------------------|-------------------------|---------------------|
| Taxlots           | WaterLines          | Cartographic lines      | ReferenceLines      |
| PLSSLines         | Historical Boundary | Anno Arrow              | Historical Boundary |
| 22-Section Corner |                     | Bearing / Distance Hook | Anno Arrow          |



Bureau of Land Management, State of Oregon, State of Oregon DOT, State

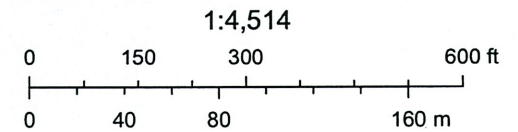
Polk County GIS

# ArcGIS Web Map



5/21/2021, 10:09:49 AM

- |                   |                     |                         |                     |
|-------------------|---------------------|-------------------------|---------------------|
| Taxlots           | WaterLines          | Cartographic lines      | ReferenceLines      |
| PLSSLines         | Historical Boundary | Anno Arrow              | Historical Boundary |
| 22-Section Corner |                     | Bearing / Distance Hook | Anno Arrow          |



Bureau of Land Management, State of Oregon, State of Oregon DOT, State

THIS MAP IS FOR ASSESSMENT AND TAXATION PURPOSES ONLY

SEC. 12 T.8S. R.6W. W.M.  
Polk County  
1" = 400'

8.6.12

See Map 8.6.1

PT. 1992-0045

PT 1993-0022

2-4

See Map 8.6.11

See Map 8.5.7

RECEIVED

NOV 14 2023

OWRD

2-6

1992-0021

PP 2003-0037

See Map 8.6.13

N.W. CORNER  
JOHN BERGH  
DLC NO. 37

10/30/2020

8.6.12

Cancelled No.

- 104
- 106
- 111
- 200
- 201
- 400T1
- 400
- 403
- 490
- 600T1
- 600T2
- 600
- 902
- 903
- 1300
- 1301
- 1302
- 1303

505'  
from Survey  
monument to  
center of  
Farley Creek  
Pump site.

