

THIS MAP WAS PREPARED FOR ASSESSMENT PURPOSE ONLY.

SEC.17 T.26S. R.2W. W.M.  
DOUGLAS COUNTY  
1:400

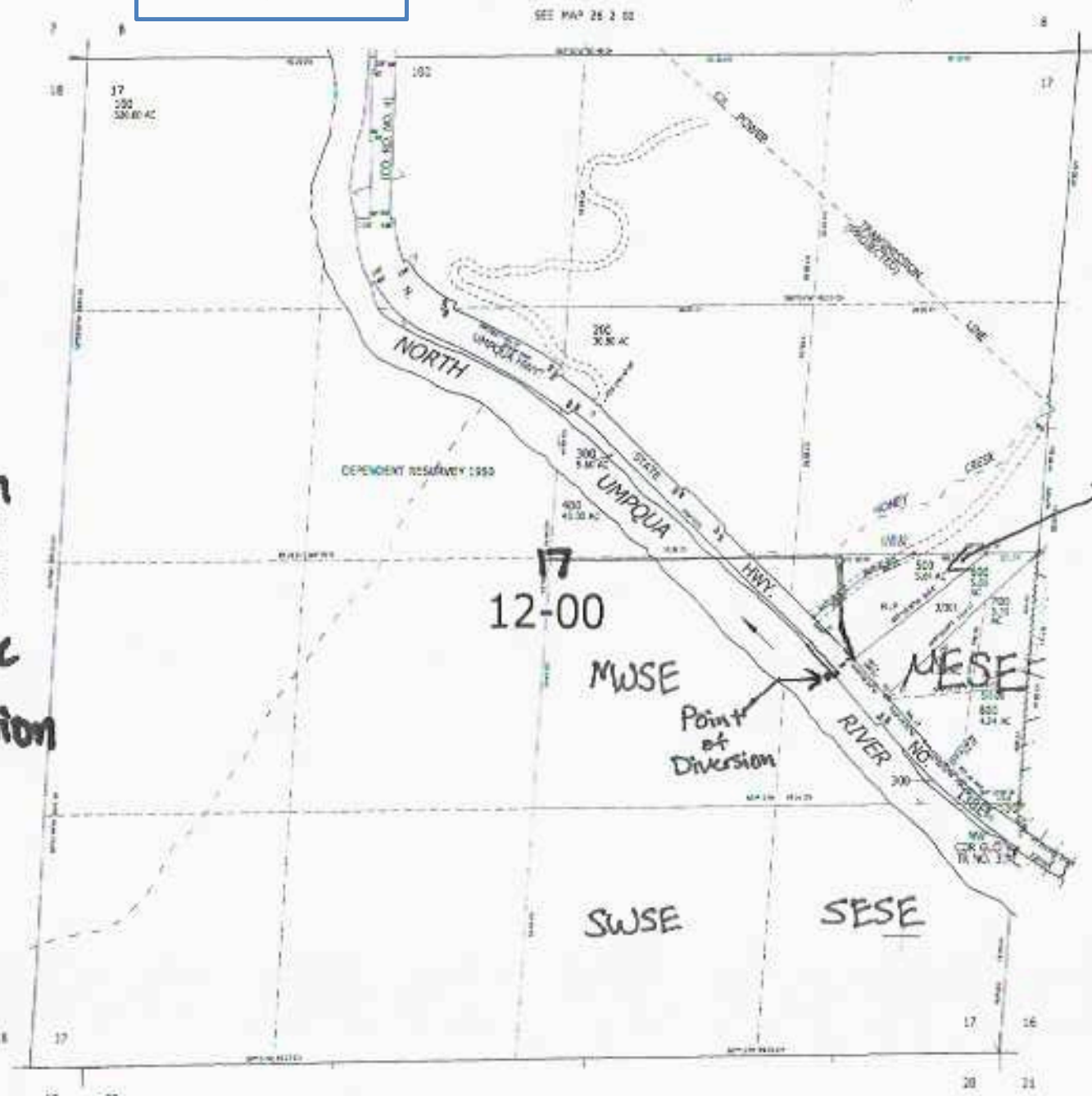
REVISED ON  
3-11-21

26 2 17

E-RECEIVED  
JAN 08 2024  
OWRD



Point of Diversion is:  
500 ft South  
E 1600 ft  
East from the  
Center of Section  
17



12-00

Tax Lot 500

UPDATE POD 1/8/2024

S-89389

SEE MAP 26 2 00

26 2 17