

RECEIVED

SEP 29 1999

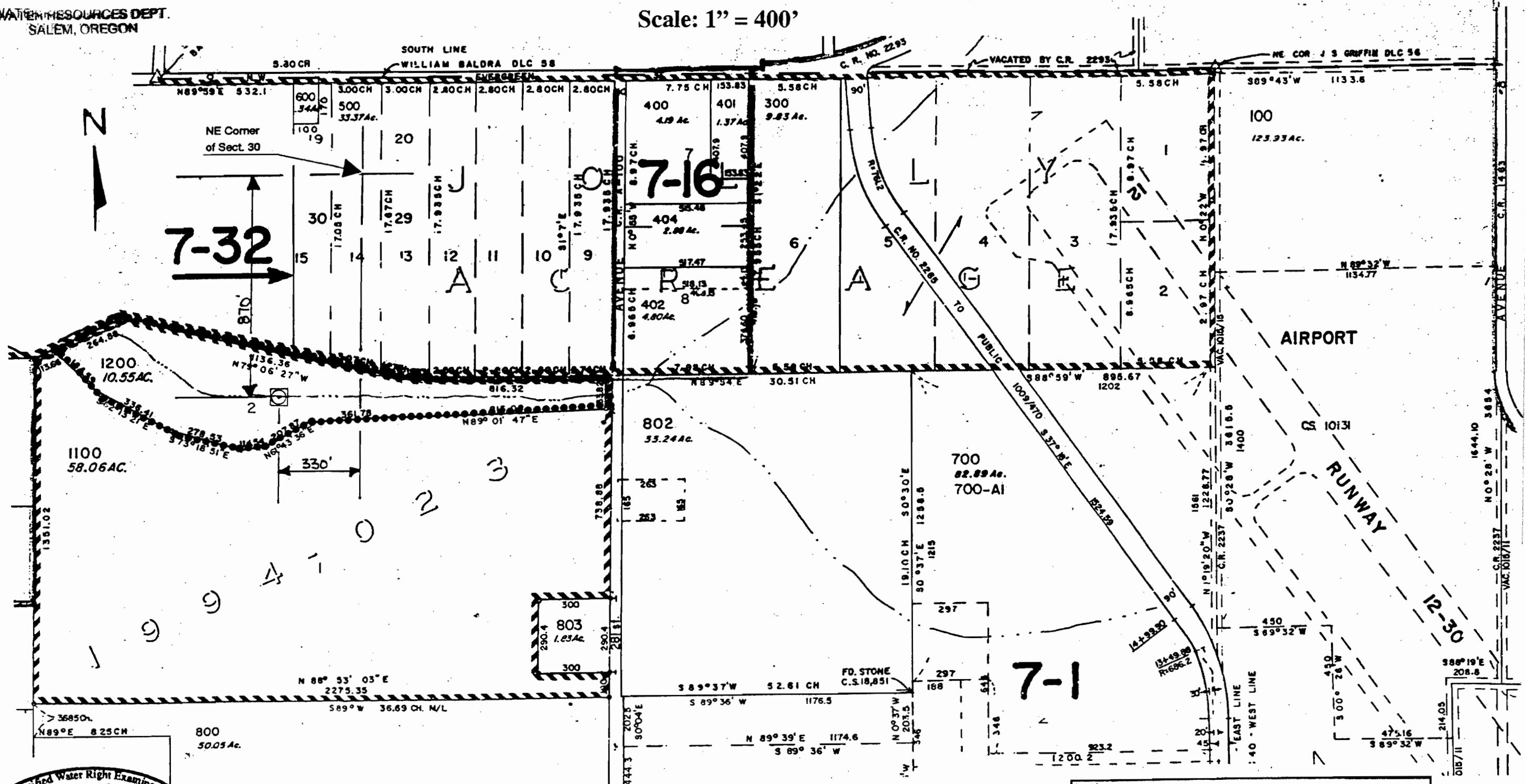
WATER RESOURCES DEPT.
SALEM, OREGON

Final Proof Map

For Jones Farm, Intel Corporation



Section 30 T1N, R2W W.M & Section 29 T1N, R2W W.M

Scale: 1" = 400'



Certified Water Right Examiner
#325-WRE
Mark Madison
Mark P. Madison
May 19, 1992
STATE OF OREGON

Spillway is located 330' W and 870' S
of the NE Corner of Section 30, T1N, R2W, W.M.

LEGEND:
 Spillway
 Property Boundary

Intel Corporation
 Map compiled from Intel design drawings
 and tax map 1N2 29