

BENEFICIAL USE MAP

APPLICATION R-71491
PERMIT R-11451

IN THE NAME OF:

UNITED STATES BUREAU OF LAND MANAGEMENT

COOS BAY DISTRICT OFFICE
1300 AIRPORT LANE
NORTH BEND, OR. 97459

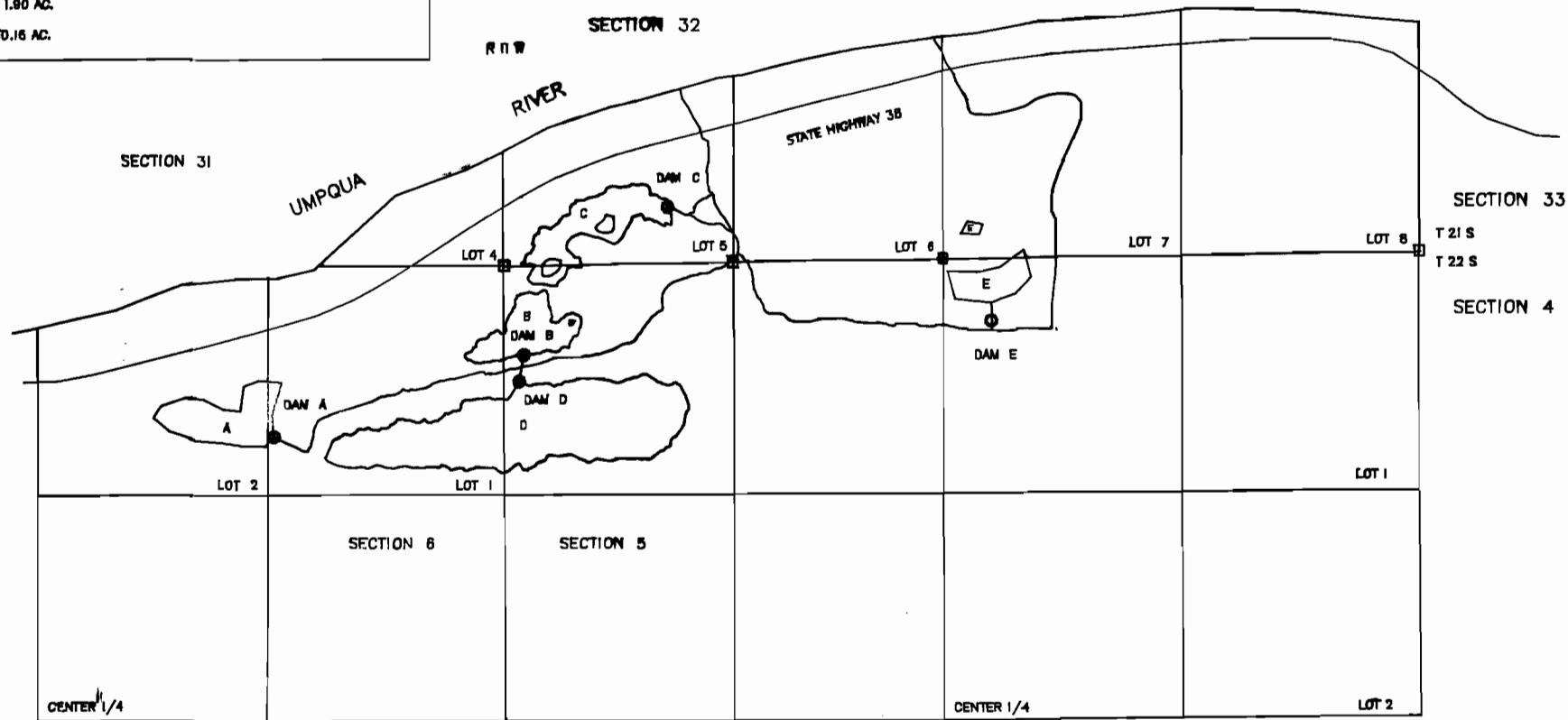
T. 21 and 22 S., R. 11 W., W.M.
SECTIONS 32, 5, and 6
JUNE 7, 1993

SCALE

1" = 1320'



WETLAND SURFACE AREA	WATER CONTROL STRUCTURE LOCATION FROM NW CORNER SECTION 5
RESERVOIR "A" Sec. 6 NW1/4 NE1/4 3.38 AC. NE1/4 NE1/4 .36 AC. 3.75 AC.	1083.69 SOUTH, 1274.08 WEST
RESERVOIR "B" Sec. 5 NW1/4 NW1/4 2.70 AC. Sec. 6 NE1/4 NE1/4 .70 AC. 3.40 AC.	603.57 SOUTH, 108.08 EAST
RESERVOIR "C" Sec. 32 SW1/4 SW1/4 3.78 AC. Sec. 5 NW1/4 NW1/4 .42 AC. 4.20 AC.	323.83 NORTH, 842.46 EAST
RESERVOIR "D" Sec. 5 NW1/4 NW1/4 10.29 AC. Sec. 6 NE1/4 NE1/4 8.61 AC. 18.90 AC.	705.69 SOUTH, 120.57 EAST
RESERVOIR "E" Sec. 5 NW1/4 NE1/4 1.80 AC. Sec. 32 SW1/4 SE1/4 .30 AC. 1.90 AC.	252.27 SOUTH, 2871.31 EAST
TOTAL ACREAGE	30.16 AC.



LEGEND

- FOUND BLM BRASS CAP
- WATER CONTROL STRUCTURE
- HIGHWAY

NOTE:

THE PURPOSE OF THIS MAP IS TO IDENTIFY THE LOCATION OF THE WATER RIGHT. IT IS NOT INTENDED TO PROVIDE INFORMATION RELATIVE TO THE LOCATION OR THE PROPERTY OWNERSHIP BOUNDARY LINES.

EXECUTED BY:

BOYD W. PETERSON, RLS, CWRE
CADASTRAL SURVEYOR
BUREAU OF LAND MANAGEMENT
COOS BAY DISTRICT OFFICE
1300 AIRPORT LANE
NORTH BEND, OR. 97459

