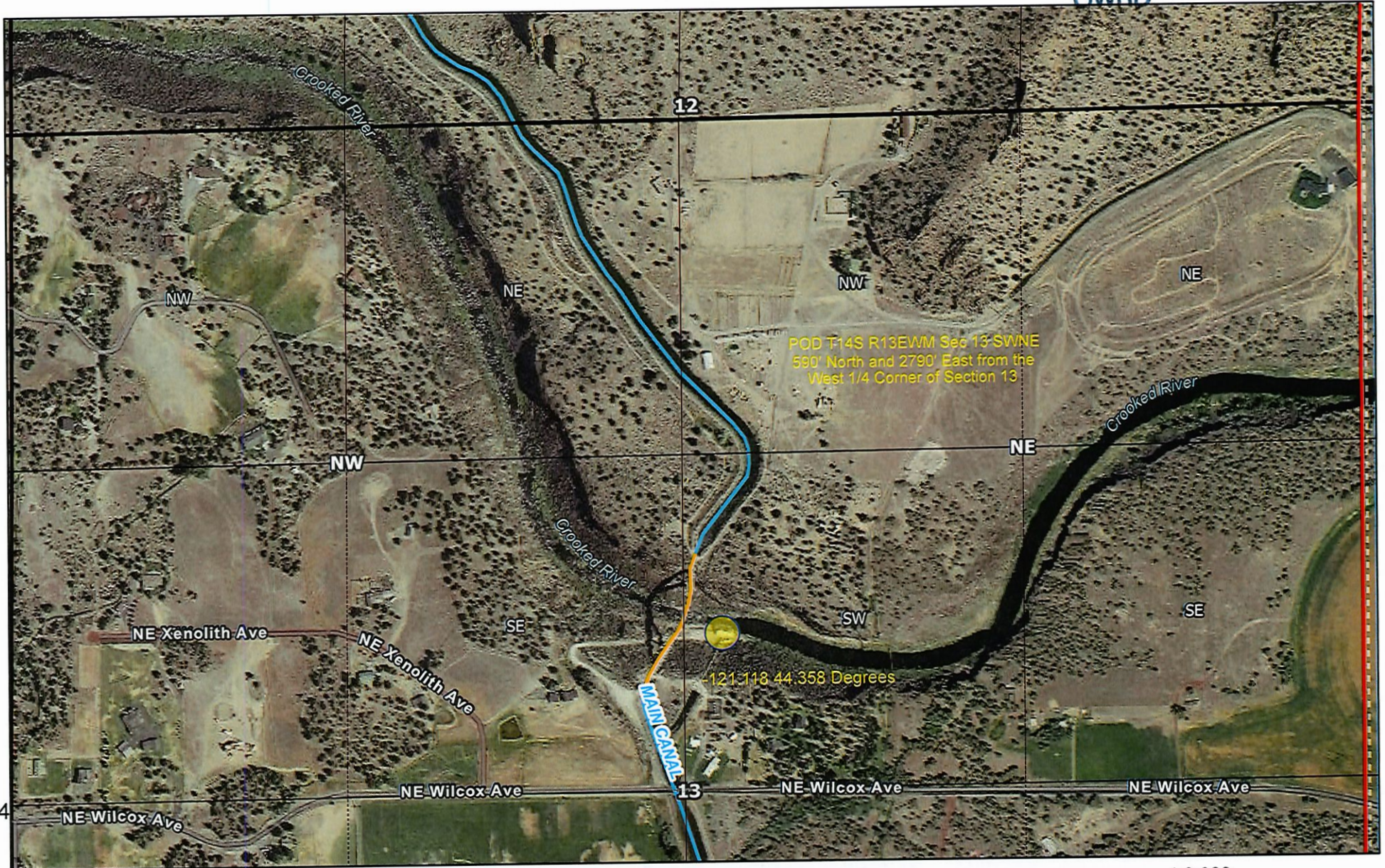


# T14S R13EWM Sec13 SWNE

OWBD



POD T14S R13EWM Sec 13-SWNE  
 590' North and 2790' East from the  
 West 1/4 Corner of Section 13

-121.118 44.358 Degrees

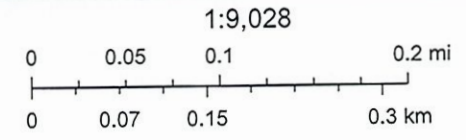
MAIN CANAL

N1/4

2/24/2022, 9:20:03 AM

- Override 1POD
- Sections
- QuarterQuarters
- Pipeline
- TownshipRange
- QuarterSections
- Canals

22-1974

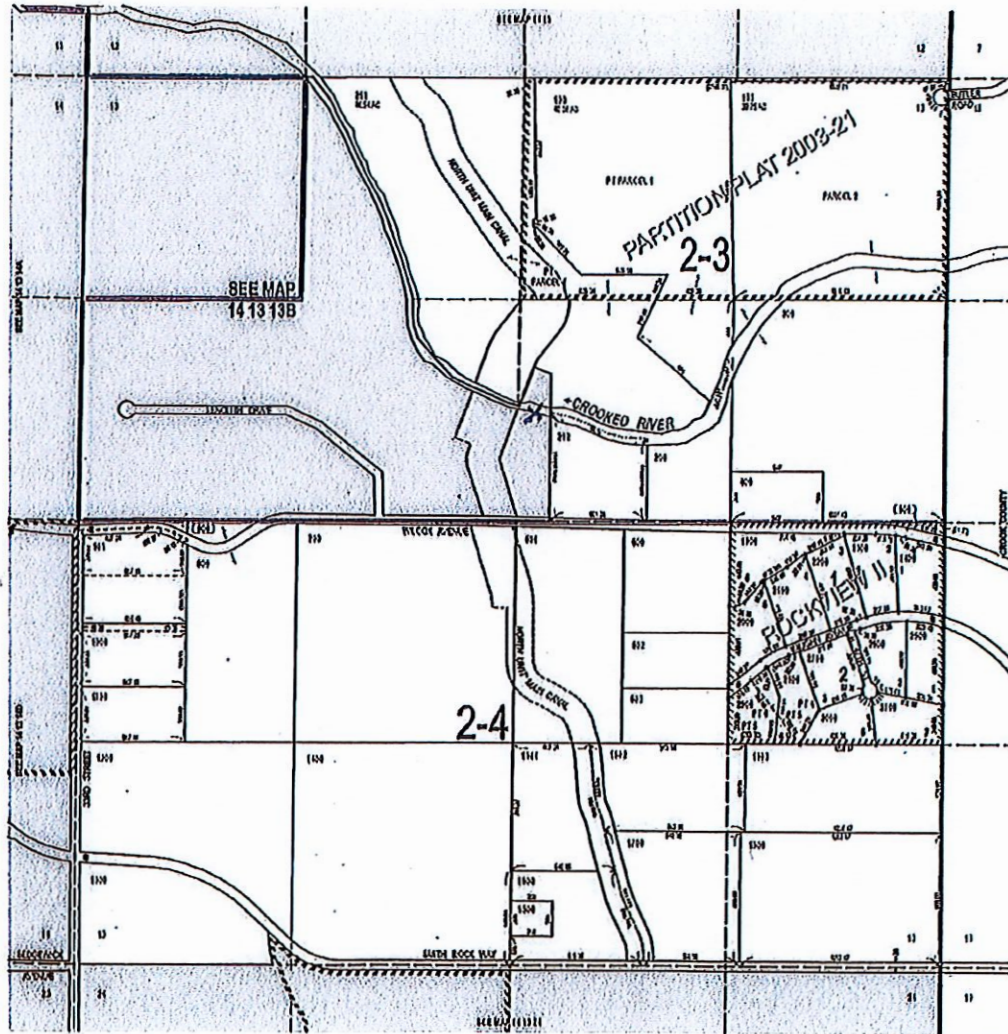


THIS MAP IS A PRELIMINARY  
ASSEMBLY MAP ONLY

19214119

SECTION 13 T.14S. R.13E. W.M.  
DESCHUTES COUNTY  
1" = 400'

14 13 13  
& INDEX



14 13 13  
& INDEX

POD T14S R13EWM X - P00  
Sec 13 SWNE  
590' North and  
2790' East from  
the West 1/4 Corner  
of Section 13

Received  
APR 22 2024

OWRD

LL-1974