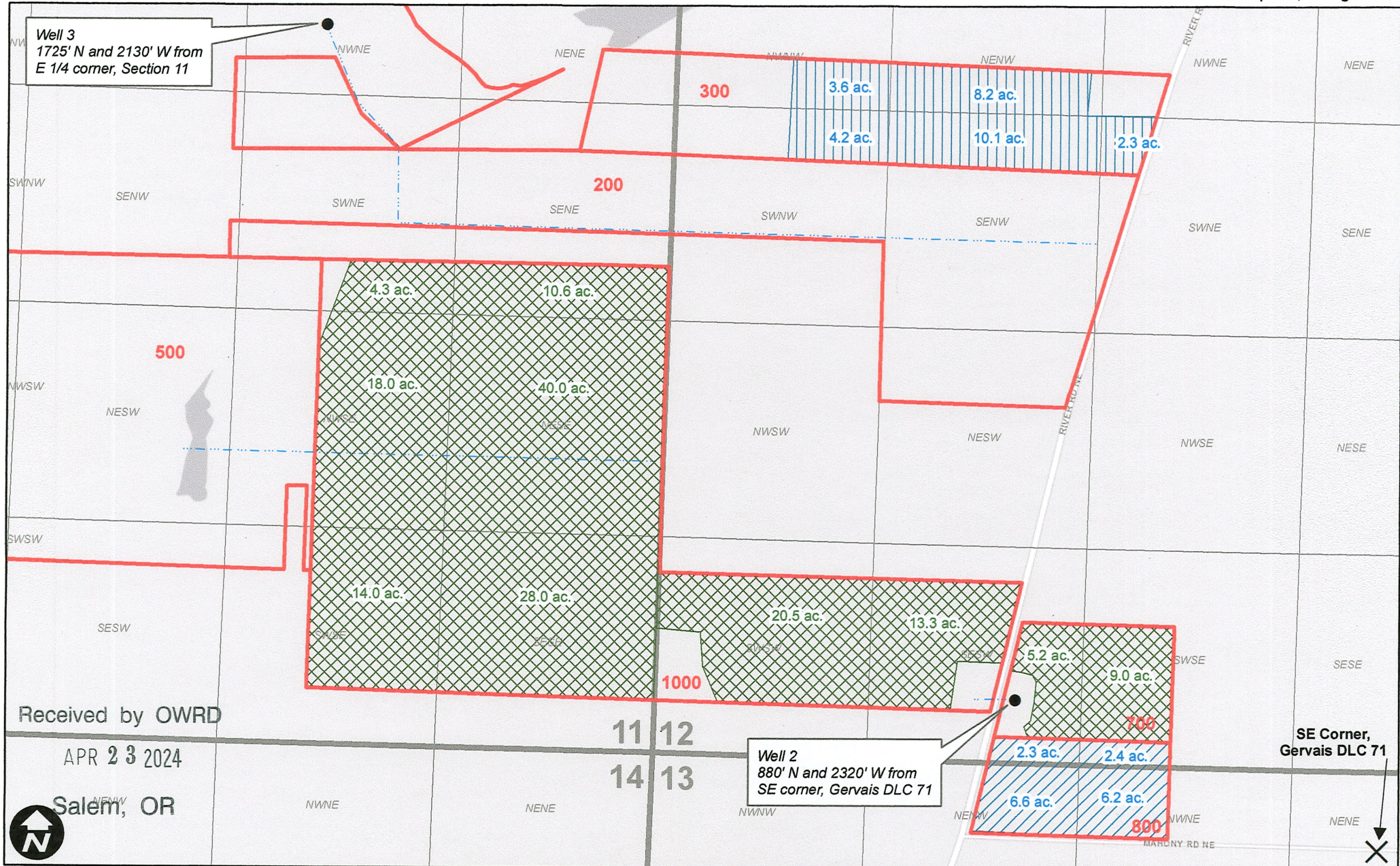


Groundwater Application - J & S Farms

G-19002 - AMENDED March 2023

Township 5S, Range 3W



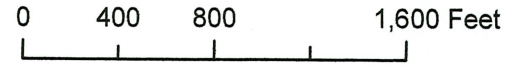
Well 3
1725' N and 2130' W from
E 1/4 corner, Section 11

Well 2
880' N and 2320' W from
SE corner, Gervais DLC 71

Received by OWRD

APR 23 2024

Salem, OR



Legend

- Proposed IR from Well 2
- Proposed IR from Well 3
- Proposed NU from Well 2
- Mainline
- Taxlot