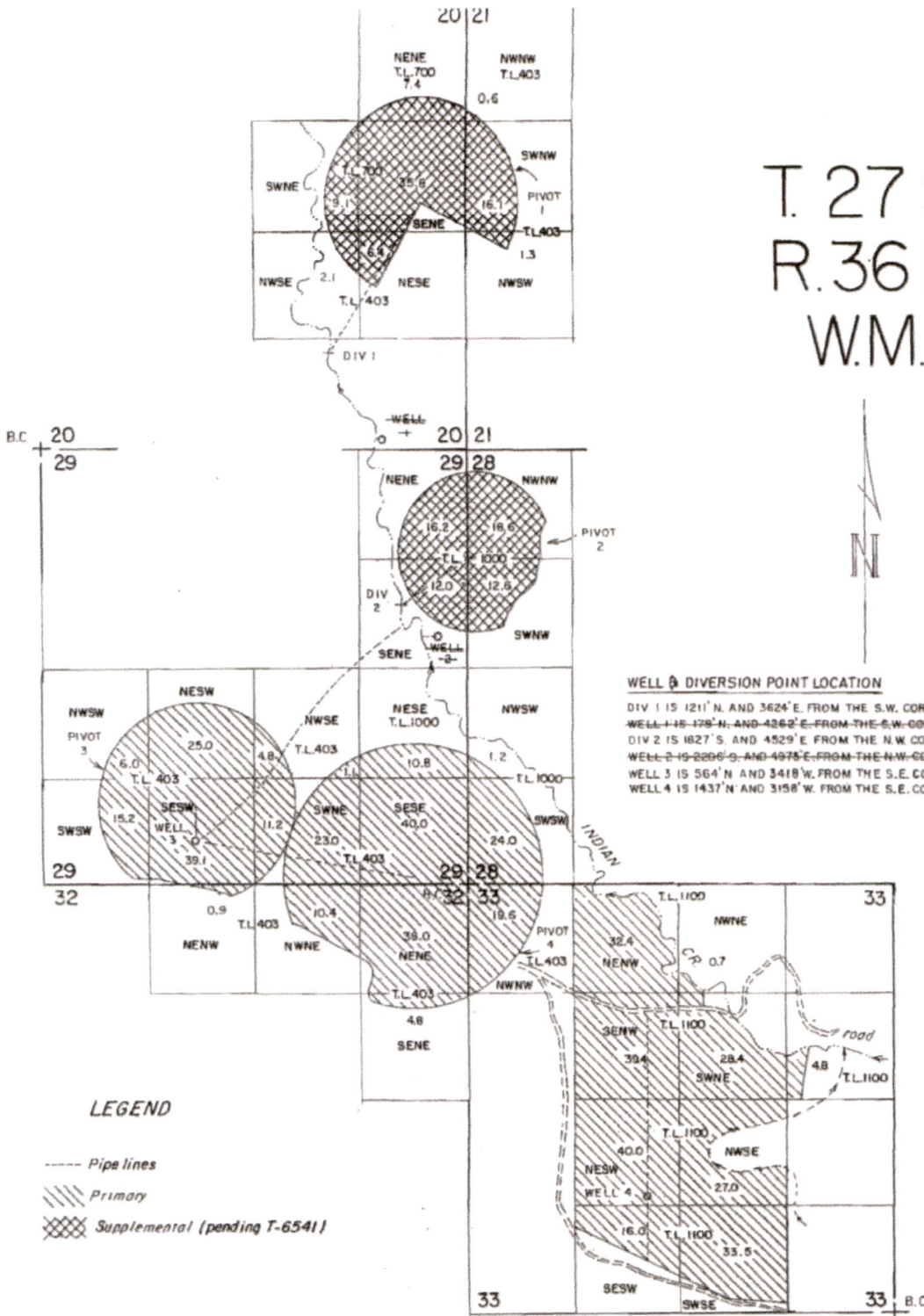


T. 27 S.,
R. 36 E.,
W.M.



WELL & DIVERSION POINT LOCATION

DIV 1 IS 1211' N. AND 3624' E. FROM THE S.W. CORNER OF SEC. 20.
WELL 1 IS 179' N. AND 4262' E. FROM THE S.W. CORNER OF SEC. 20.
DIV 2 IS 1027' S. AND 4529' E. FROM THE N.W. CORNER OF SEC. 29.
WELL 2 IS 2206' S. AND 4978' E. FROM THE N.W. CORNER OF SEC. 29.
WELL 3 IS 564' N. AND 3418' W. FROM THE S.E. CORNER OF SEC. 29.
WELL 4 IS 1437' N. AND 3158' W. FROM THE S.E. CORNER OF SEC. 33.

LEGEND

- Pipe lines
- //// Primary
- XXXX Supplemental (pending T-6541)

WELL 1 & 2 are to be deleted.
WELL 3- Pivots 1 - 4
WELL 4- wheel lines in Sec. 33

THE PURPOSE OF THIS MAP IS TO IDENTIFY THE LOCATION OF THE WATER RIGHT IT IS INTENDING TO PROTECT. INFORMATION RELATIVE TO THE LOCATION OF PROPERTY OWNERSHIP.

Received
MAY 10 2024
OWRD

<p>RENEW 1-1-2007</p>	TREE TOP RANCHES, LLP WATER RIGHT APPLICATION MAP	
	Scale: 4" = 1 MILE Dgn: Dwn: CHRIS Ckd:	Date: JAN 2006 M. A. PALMER & SONS, INC. ENGINEERING & SURVEYING 254 N. Alder - Box 61 Burns, Oregon 97720

RECEIVED
 FEB 17 2006
 WATER RESOURCES DEPT
 SALEM, OREGON

appno G-16630