

PROJECT BOUNDARY - FEDERAL LANDS

COURSE NO.	BEARING	LENGTH, FEET
1	S 46°12'E	315
2	S 70°24'E	390
3	N 83°18'E	136
4	S 30°36'E	80
5	S 74°18'W	269
6	N 54°12'W	210
7	N 82°42'W	160
8	S 2°48'W	193
9	S 45°18'W	176
10	S 82°24'W	135

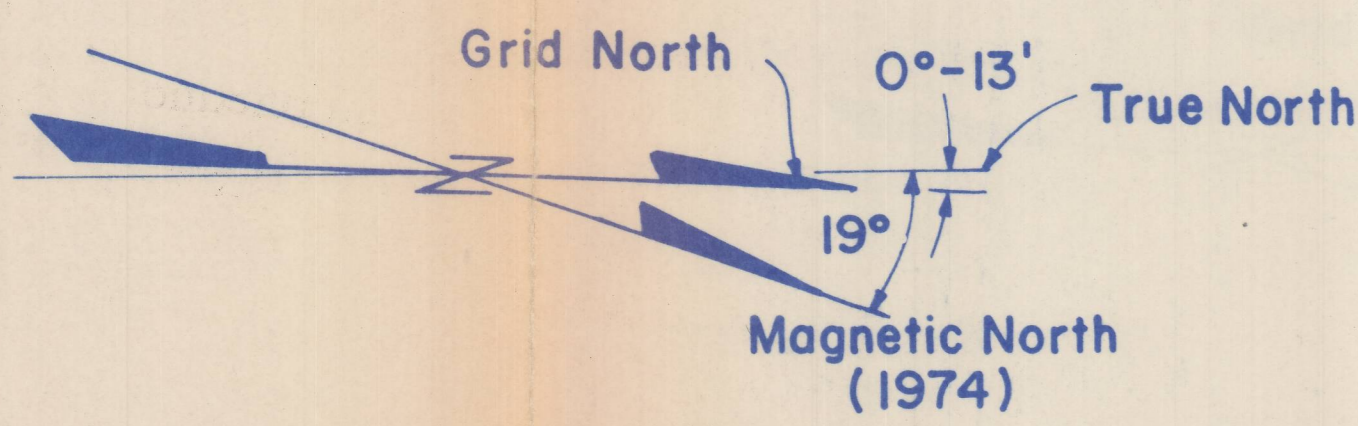
COURSE NO.	BEARING	LENGTH, FEET
11	S50°24'W	285
12	N61°36'W	180
13	N39°42'E	138
14	N58°06'E	112
15	N72°24'E	230
16	N33°24'E	114
17	N19°06'W	217
18	N52°42'W	120
19	N71°06'W	155
20	S86°42'W	157

COURSE NO.	BEARING	LENGTH, FEET
21	N 75°18'W	98
22	S 73°42'W	152
23	N 80°12'W	182
24	S 64°42'W	186
25	N15°36'E	99
26	N43°42'E	103
27	N79°48'E	200
28	N45°12'E	70
29	N13°24'E	100
30	N63°48'E	140

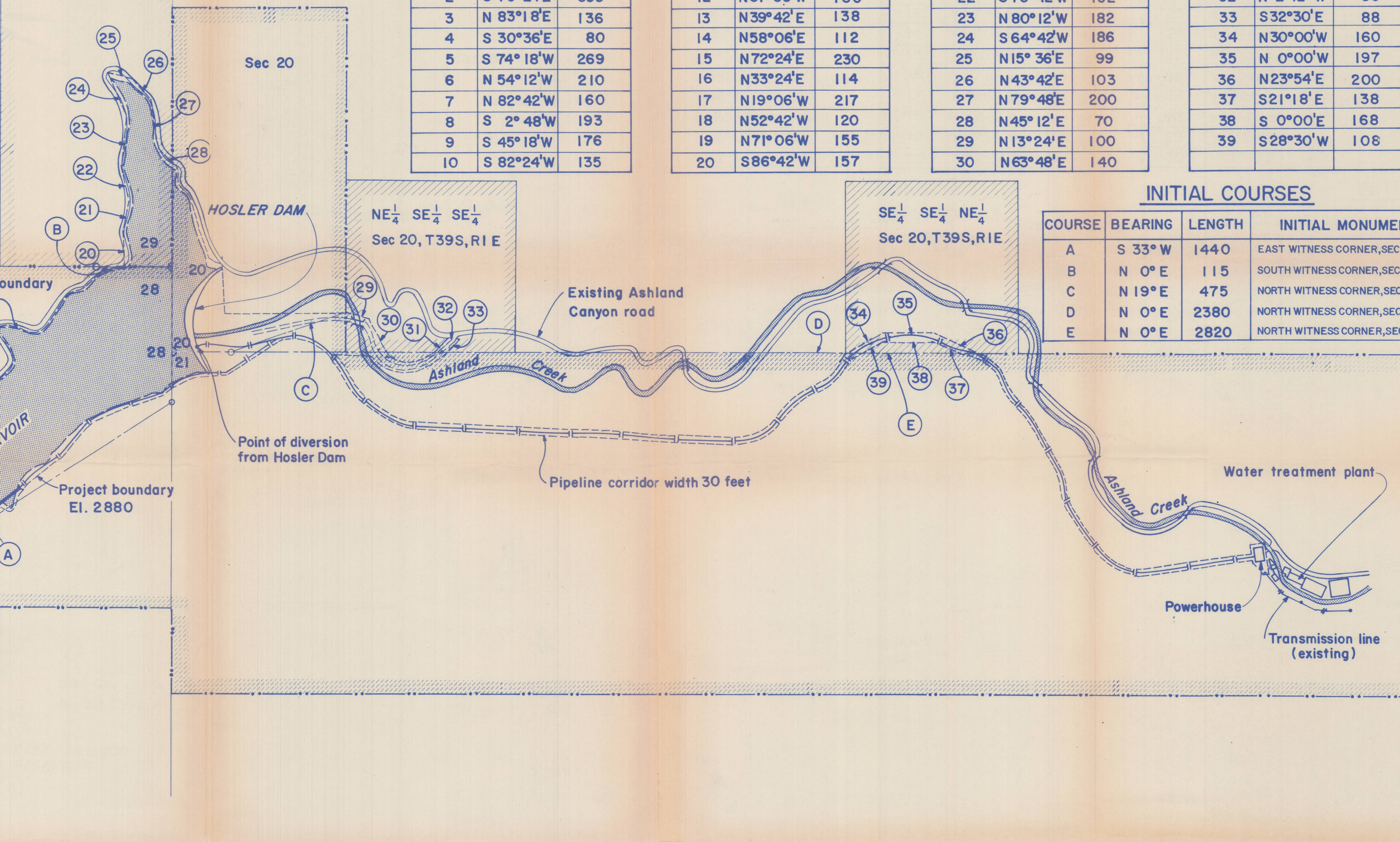
COURSE NO.	BEARING	LENGTH, FEET
31	N 41°30'W	80
32	N 2°12'W	50
33	S32°30'E	88
34	N30°00'W	160
35	N 0°00'W	197
36	N23°54'E	200
37	S21°18'E	138
38	S 0°00'E	168
39	S28°30'W	108

INITIAL COURSES

COURSE	BEARING	LENGTH	INITIAL MONUMENT
A	S 33° W	1440	EAST WITNESS CORNER, SEC 20 & 21
B	N 0° E	115	SOUTH WITNESS CORNER, SEC 28 & 29
C	N 19° E	475	NORTH WITNESS CORNER, SEC 20 & 21
D	N 0° E	2380	NORTH WITNESS CORNER, SEC 20 & 21
E	N 0° E	2820	NORTH WITNESS CORNER, SEC 20 & 21



N 1/2 Gov. Lot 1,
Sec 29, T39S, R1E

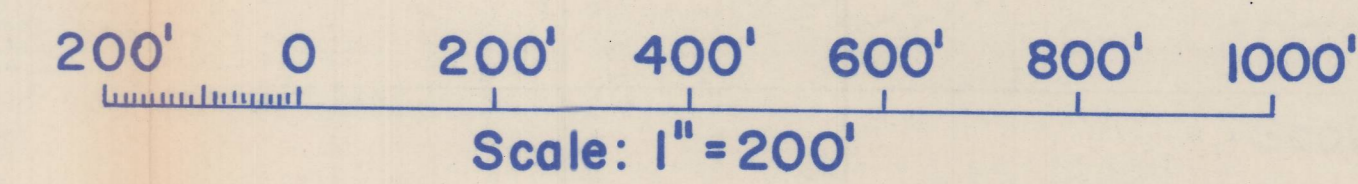


LOCATIONS OF POINTS OF DIVERSION

DIVERSION	DISTANCE, FEET NORTH ON SOUTH	DISTANCE, FEET EAST ON WEST	PUBLIC LAND SURVEY CORNER
Hosler dam	100 North	20 West	Southeast corner, Sec. 20
West Fork diversion dam	1850 South	1100 East	Northwest corner, Sec. 28
East Fork diversion dam	1620 South	1800 East	Northwest corner, Sec. 28

LEGEND

- Maximum reservoir limit
- Section line
- Project boundary
- U.S. Forest Service property line
- Initial course line
- Project access road
- City of Ashland property
- Pipeline
- Transmission line
- Federal lands occupied by the project
- (A) Initial course designation
- (2) Project boundary designation, Federal lands
- Initial monument; Public Land Survey

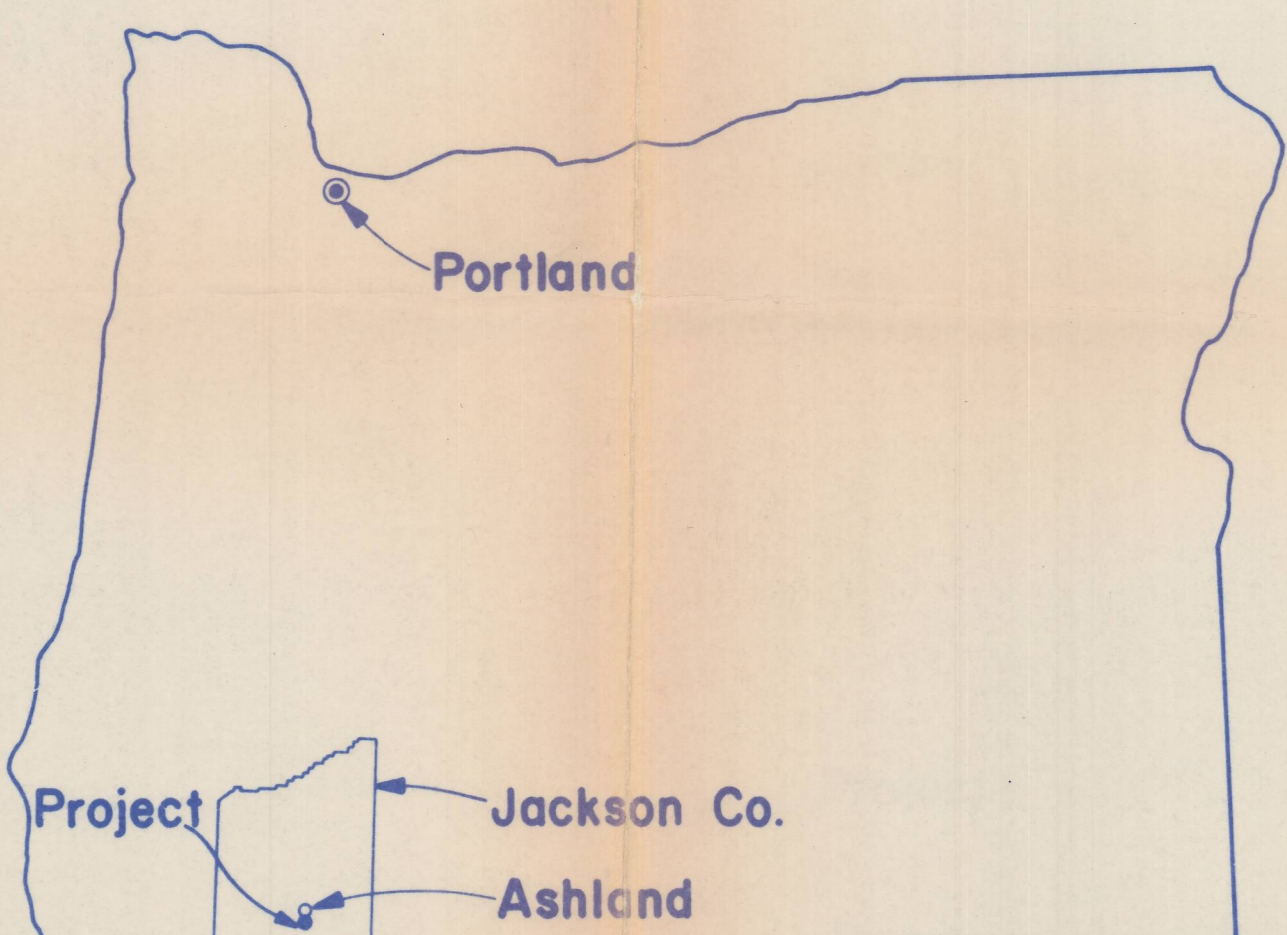
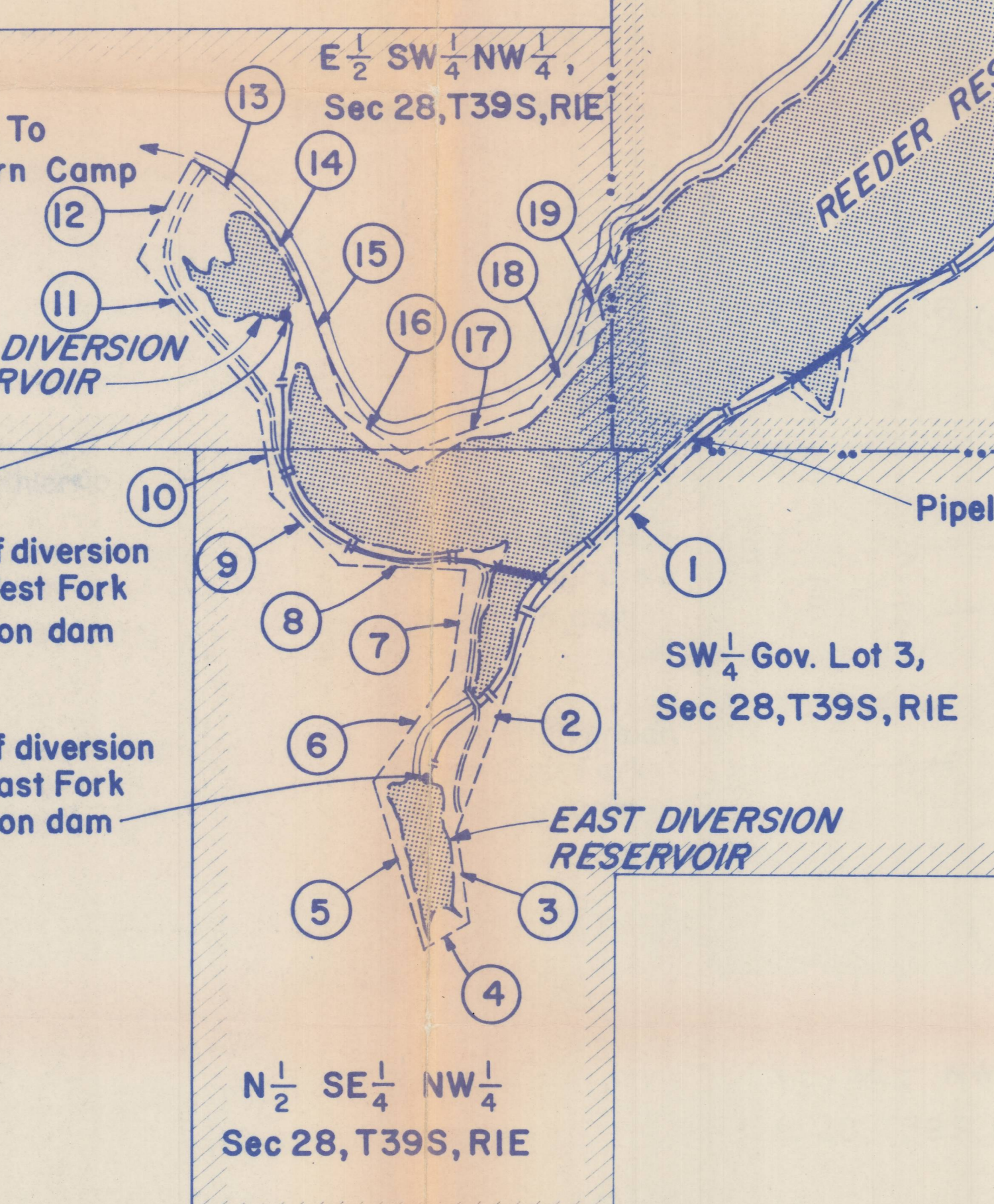


M. J. Blount

F.E.R.C. PROJECT NO. 1107
REEDER GULCH HYDROELECTRIC PROJECT
CITY OF ASHLAND, ASHLAND, OREGON

APPROPRIATION PERMIT MAP

Application No. C1057
Permit No. 47628



LOCATION MAP