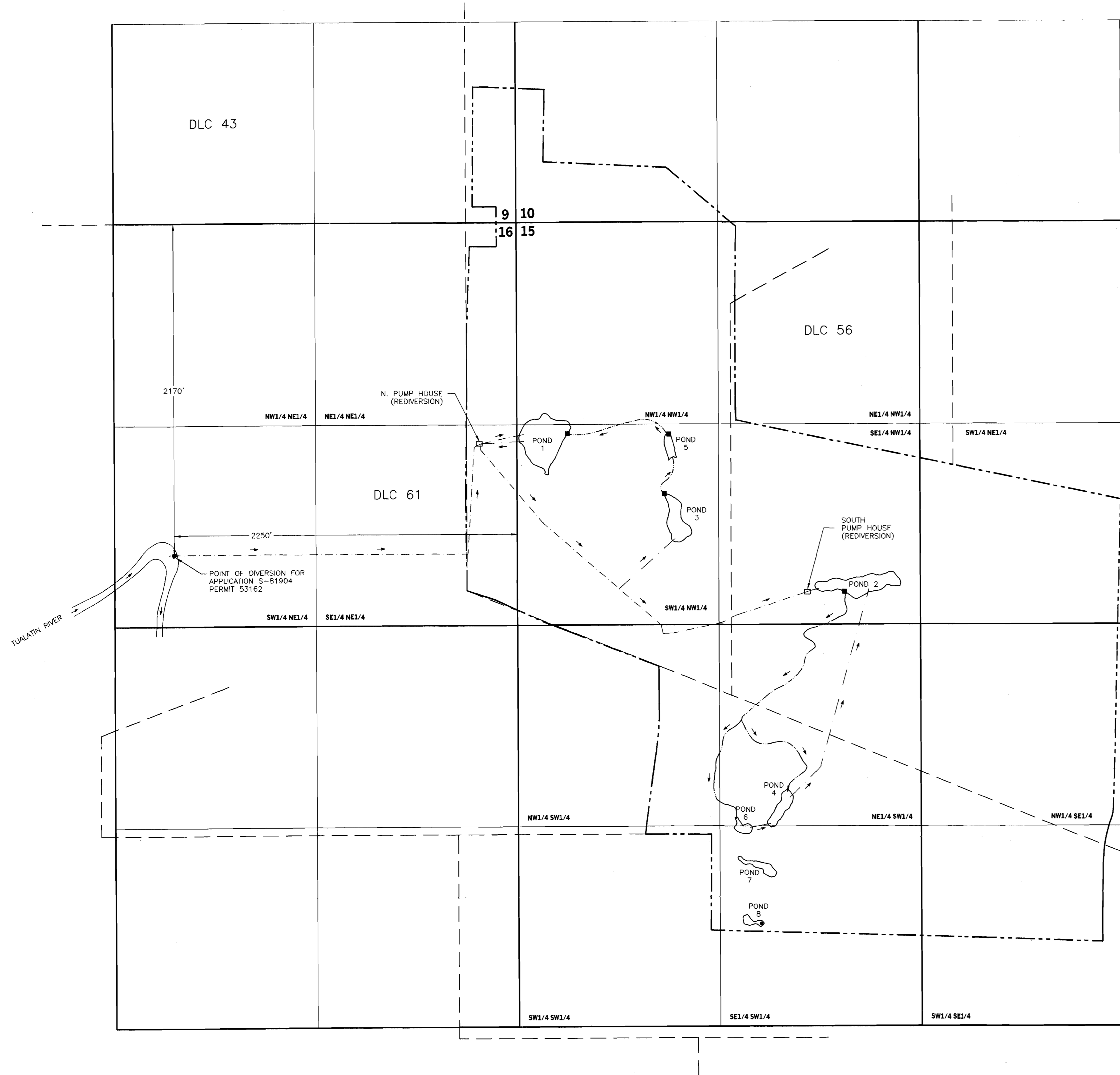
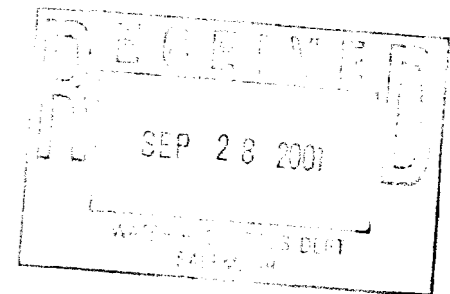


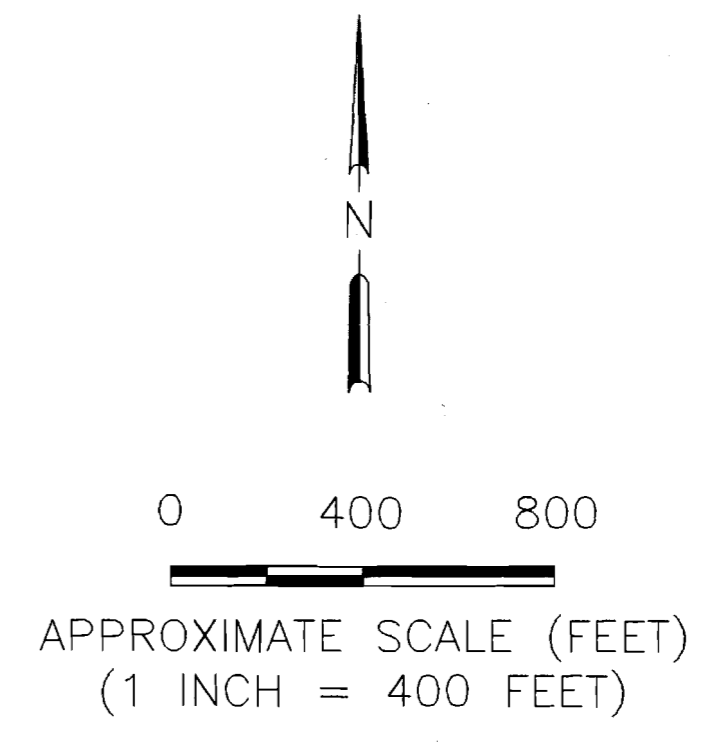
**TOWNSHIP 1 SOUTH, RANGE 2 WEST, W.M.
SECTIONS 9, 10, 15 AND 16**



- LEGEND**
- QUARTER SECTION LINES
 - SIXTEENTH LINE
 - - - - - APPROXIMATE PROPERTY BOUNDARY
 - - - - - APPROXIMATE WATER LINE LOCATION
 - - - - - DLC LINE
 - - - - - POND FLOW DIRECTION
 - DAM
 - TRICKLE TUBE IN POND 8

- POND 1** APPLICATION R-81905, PERMIT R-12532. DAM LOCATED 1,380 FT SOUTH AND 330 FT EAST OF NW CORNER OF SECTION 15.
- POND 2** APPLICATION R-83786, PERMIT R-12533. DAM LOCATED 2,425 FT SOUTH AND 2,140 FT EAST OF NW CORNER OF SECTION 15.
- POND 3** APPLICATION R-83789, PERMIT R-12537. DAM LOCATED 1,780 FT SOUTH AND 965 FT EAST OF NW CORNER OF SECTION 15.
- POND 4** APPLICATION R-83788, PERMIT R-12536. NO DAM. POND LOCATED 3,840 FT SOUTH AND 1,730 FT EAST OF NW CORNER OF SECTION 15.
- POND 5** APPLICATION R-83787, PERMIT R-12535. DAM LOCATED 1,385 FT SOUTH AND 1,000 FT EAST OF NW CORNER OF SECTION 15.
- POND 6 (REFERENCED AS POND C IN PERMIT)**
APPLICATION R-84338, PERMIT R-12957. NO DAM. POND LOCATED 3,980 FT SOUTH AND 1,480 FT EAST OF NW CORNER OF SECTION 15.
- POND 7 (REFERENCED AS POND B IN PERMIT)**
APPLICATION R-84337, PERMIT R-12956. NO DAM. POND LOCATED 4,220 FT SOUTH AND 1,590 FT EAST OF NW CORNER OF SECTION 15.
- POND 8 (REFERENCED AS POND A IN PERMIT)**
APPLICATION R-84336, PERMIT R-12955. TRICKLE TUBE LOCATED 4,605 FT SOUTH AND 1,595 FT EAST OF NW CORNER OF SECTION 15.

NOTE: POINT OF DIVERSION ON TUALATIN RIVER LOCATED 2,170' SOUTH AND 2,250' WEST OF NE CORNER OF SECTION 16.



THIS MAP WAS PREPARED FOR THE PURPOSE OF IDENTIFYING THE LOCATION OF WATER RIGHTS ONLY AND IS NOT INTENDED TO PROVIDE LEGAL DIMENSIONS OR LOCATIONS OF PROPERTY OWNERSHIP LINES.

<p>SECOR International Incorporated 015</p>	<p>CLAIM OF BENEFICIAL USE MAP PONDS 1 THROUGH 8 THE RESERVE VINEYARDS & GOLF CLUB 4805 SW 229TH AVENUE ALOHA, OREGON</p>	<p>FIGURE: 1</p>
<p>JOB#: 015.08772.100 APPR: DWN: KPM DATE: 09/25/01</p>		