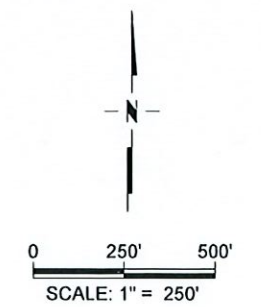


Received by OWRD
 JUN 20 2024
 Salem, OR



- LEGEND:**
- PROPERTY BOUNDARY
 - - - SECTION LINE
 - 13 18 SECTION CORNER
 - 24 19 SECTION CORNER
 - 13 18 QUARTER CORNER
 - ⊙ WELL



REUSE OF DOCUMENTS: THIS DOCUMENT AND THE IDEAS AND DESIGN INCORPORATED HEREIN, AS AN INSTRUMENT OF PROFESSIONAL SERVICE IS THE PROPERTY OF VALLEY SCIENCE AND ENGINEERING AND IS NOT TO BE USED, WHOLE OR IN PART WITHOUT THE WRITTEN AUTHORIZATION OF VALLEY SCIENCE AND ENGINEERING.

FRY FOODS, INC.
 ONTARIO, OREGON

REV #	DESCRIPTION	BY	DATE

DES. BY GL117
 DRG. BY 6D/R
 CHK. BY ZBB17
 DATE 7/7/2023
 JOB No. 2023210002

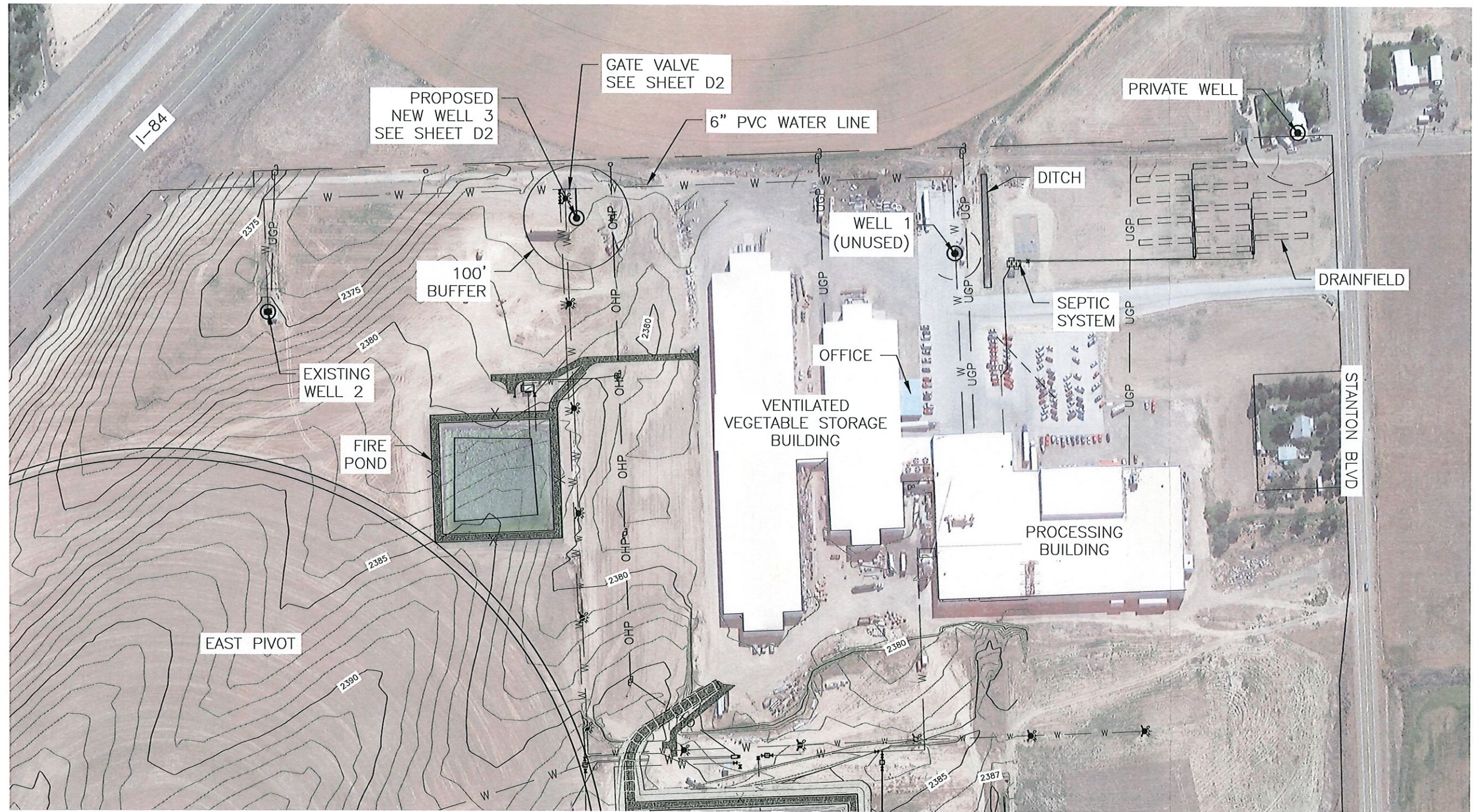
STAMP



EXISTING SITE PLAN
 PROCESS WATER MANAGEMENT SYSTEM EXPANSION

SHEET
 C1

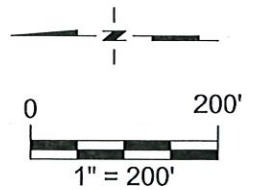
LL-1983



RECEIVED
 JUN 24 2024
 OWRD

LEGEND:

- — — — — PROPERTY BOUNDARY
- W — W — WATERLINE
- UGP — UNDERGROUND POWER
- OHP — OVERHEAD POWER
- X — FENCE
- ⊙ WELL
- ⊕ POWER POLE
- ⊗ FIRE HYDRANT



REUSE OF DOCUMENTS: THIS DOCUMENT AND THE IDEAS AND DESIGN INCORPORATED HEREIN, AS AN INSTRUMENT OF PROFESSIONAL SERVICE IS THE PROPERTY OF VALLEY SCIENCE AND ENGINEERING AND IS NOT TO BE USED, WHOLE OR IN PART WITHOUT THE WRITTEN AUTHORIZATION OF VALLEY SCIENCE AND ENGINEERING.

FRY FOODS, INC.
 ONTARIO, OREGON

REV #	DESCRIPTION	BY	DATE

DES. BY DJB05
 DRG. BY 60JR
 CHK. BY GLT
 DATE 4/23/2024
 JOB No. 2024210016

VALLEY SCIENCE AND ENGINEERING

Site Plan
 WATER SYSTEM UPGRADE

SHEET
 C1

AL-1983

C:\Users\6702784\OneDrive - Valmont Industries\Desktop\Working Drafting DJB\2023210002 Fry Foods\DWG\2024210016 NEW WELL.dwg 5/1/2024 DR702784