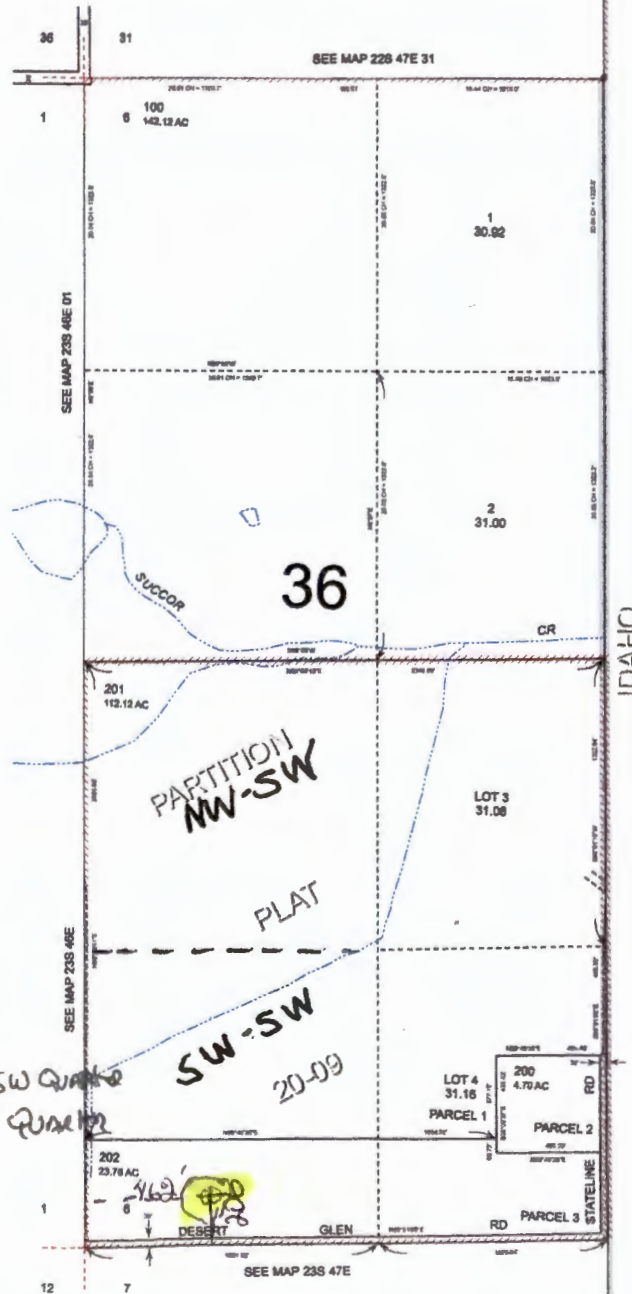


THIS MAP WAS PREPARED FOR ASSESSMENT PURPOSE ONLY



SECTION 6 T.23S. R.47E. W.M.  
MALHEUR COUNTY  
1" = 400'

23S47E06



Smoker A # 6  
center of Dam  
N. Job SW corner SW quarter  
W. 462 SW. corner / SW. quarter

Received  
JUN 24 2024  
OWRD

Received  
JUN 24 2024  
OWRD

Revised: MA  
05/28/2020

23S47E06