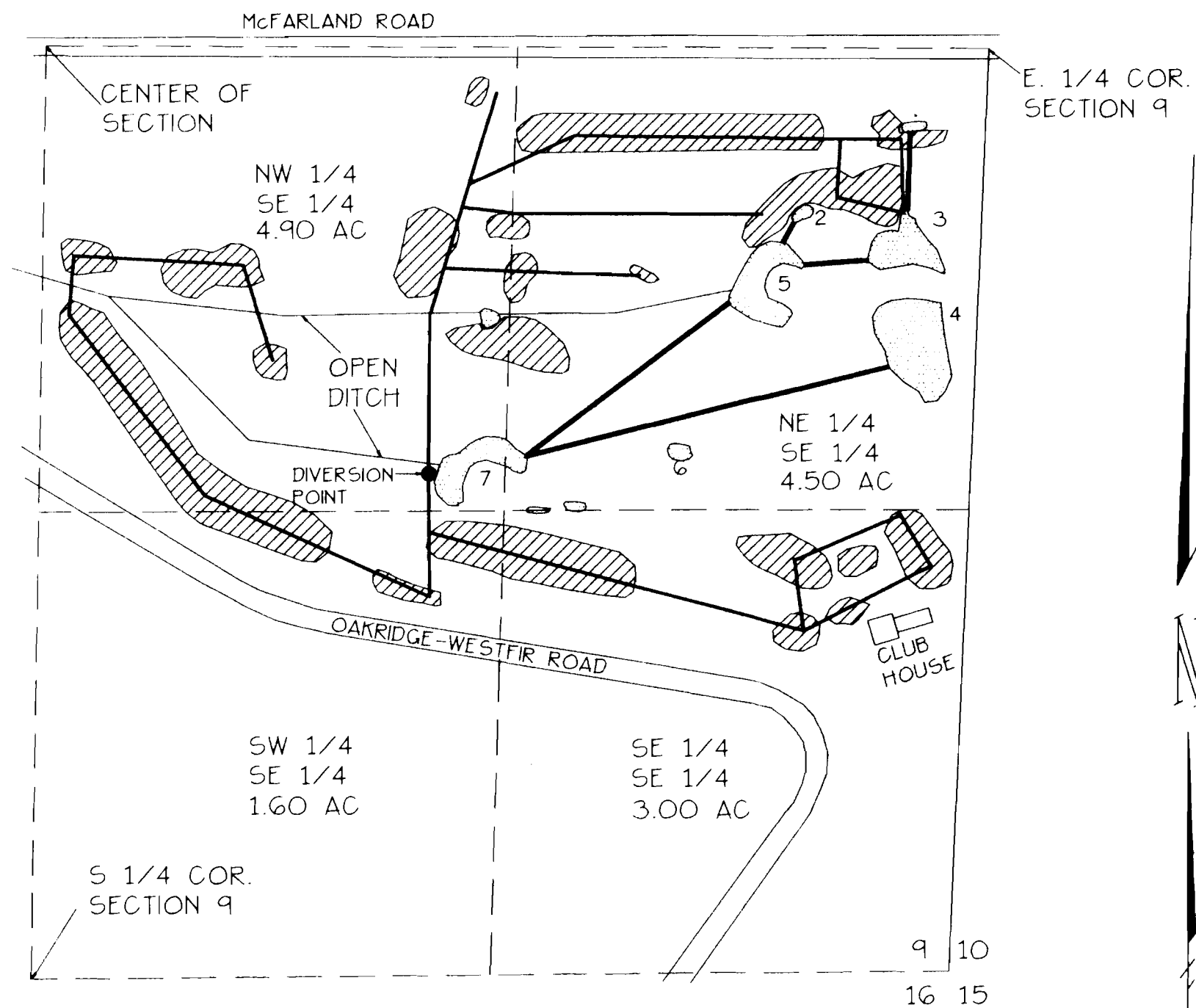


TOWNSHIP 21 SOUTH, RANGE 3 WEST, W.M.



POND INFORMATION

| POND # | AREA | DEPTH | ACRE-FEET |
|--------|--------|-------|-----------|
| 1 | 0.05AC | 3' | 0.15 |
| 2 | 0.06AC | 1 | 0.06 |
| 3 | 0.51AC | 4' | 2.04 |
| 4 | 1.06AC | 4' | 4.23 |
| 5 | 0.74AC | 6' | 4.44 |
| 6 | 0.10AC | 1.5' | 0.15 |
| 7 | 0.78AC | 4' | 3.12 |

POND LOCATIONS

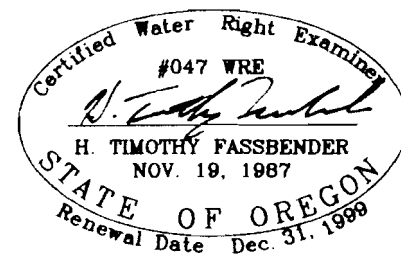
- POND #1 215.00 FEET SOUTH + 235.00 FEET WEST OF EAST 1/4 CORNER SECTION 9
- POND #2 505.00 FEET SOUTH + 540.00 FEET WEST OF EAST 1/4 CORNER SECTION 9
- POND #3 580.00 FEET SOUTH + 260.00 FEET WEST OF EAST 1/4 CORNER SECTION 9
- POND #4 870.00 FEET SOUTH + 280.00 FEET WEST OF EAST 1/4 CORNER SECTION 9
- POND #5 730.00 FEET SOUTH + 725.00 FEET WEST OF EAST 1/4 CORNER SECTION 9
- POND #6 1170.00 FEET SOUTH + 920.00 FEET WEST OF EAST 1/4 CORNER SECTION 9
- POND #7 1255.00 FEET SOUTH + 1590.00 FEET WEST OF EAST 1/4 CORNER SECTION 9

PONDS ARE INTERCONNECT VIA PVC PIPE. POND #7 OVERFLOWS INTO OPEN DITCH. POND #5 OVERFLOWS INTO OPEN DITCH. WATER IS PUMPED OUT OF POND #7 ONTO GROUNDS. FROM DIVERSION POINT.

- DENOTES POND LOCATION
- DENOTES AREA OF BENEFICIAL USE OF WATER
- DENOTES BURIED PVC PIPE

DIVERSION POINT IS LOCATED 1202.21' SOUTH AND 1586.68' WEST OF THE EAST 1/4 CORNER SECTION 9.

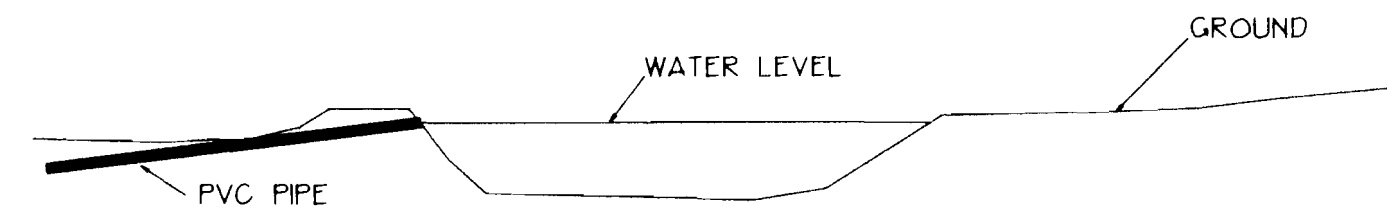
NOTE: THIS MAP WAS PREPARED FOR THE PURPOSE OF IDENTIFYING THE LOCATION OF THE WATER RIGHT ONLY. IT IS NOT INTENDED TO PROVIDE DIMENSIONS OR LOCATION OF PROPERTY OWNERSHIP LINES.



FINAL PROOF SURVEY
 APPLICATION #R-12530 PERMIT #11606
 FOR
 CIRCLE BAR GOLF CLUB
 PO BOX 214
 OAKRIDGE, OR 97463
 BY
 FORD-NEGG-FASSBENDER, INC.
 PO BOX 22735
 EUGENE, OR 97402
 PH (541)344-1852
 SEPTEMBER 2, 1999

JOB NO. 02981
 DWG NO. 02981R.DWG

SCALE
 1" = 400'



TYPICAL CROSS SECTION OF ALL SEVEN PONDS
 NO SCALE