

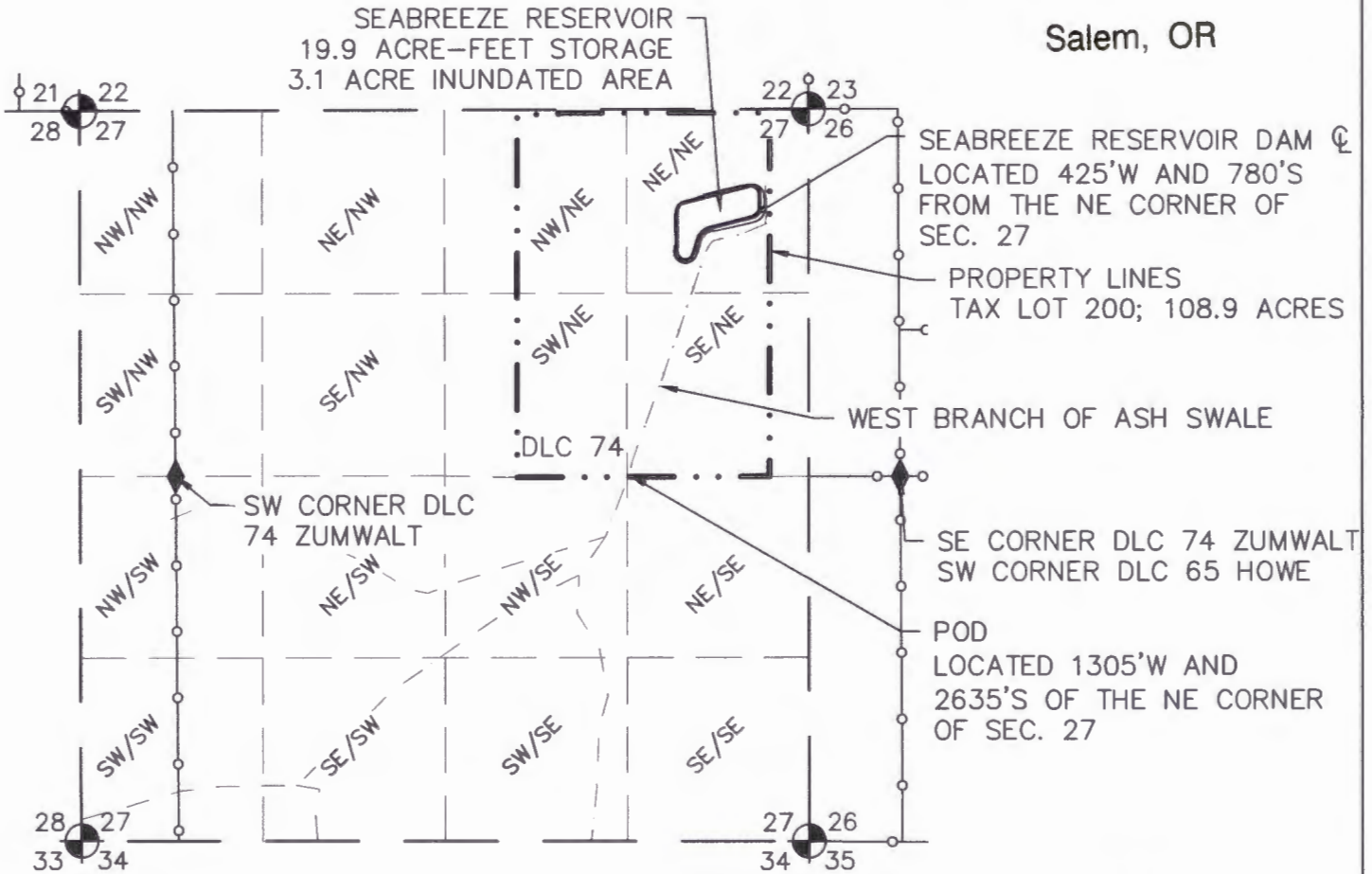
RESERVOIR APPLICATION MAP ALTERNATE PROCESS

T6S, R5W, SECTION 27, TAX LOT 200 W.M.
12100 BECK ROAD, DALLAS, OREGON 97338
POLK COUNTY

Received by OWRD

JUL 17 2024

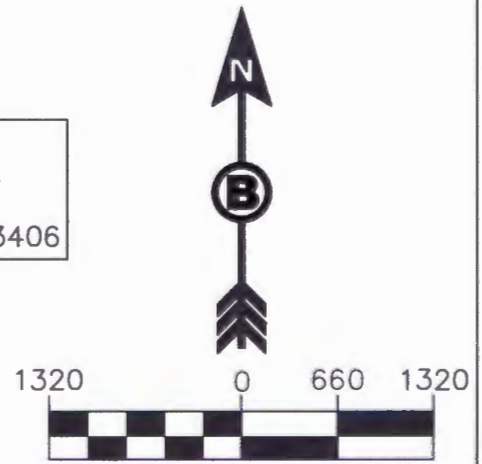
Salem, OR



LEGEND

- — — — — SECTION LINE
- - - - - 1/4 1/4 LINE
- ○ ○ ○ ○ DLC LINE
- · · · — · · · — PROPERTY LINE
- - - - - TRIBUTARY
- ⊕ SECTION CORNER
- ◆ DLC CORNER

APPLICANT:
GRAPEVINE CAPITAL, INC.
PO BOX 12958
SAN LUIS OBISPO, CA 93406



1 inch = 1320ft.
PRINT SCALE=8.5"x11"

BLUNDON ENGINEERING, LLC.
PO BOX 786
HILLSBORO, OREGON 97123
541-510-5910
NICK@BLUNDONENGINEERING.COM
DWG: RESERVOIR APP-A
DATE: 7-12-2024

MAP BASED ON TAX MAP 6S 5 27
AND USGS QUAD MAP

NOTE: THIS MAP IS PRODUCED TO
APPLY FOR THE BENEFICIAL USE OF A
WATER RIGHT. IT IS NOT INTENDED TO
PROVIDE INFORMATION RELATIVE TO THE
LOCATION OF PROPERTY LINES.

Certified Water Right Examiner
#83725
Nicholas G. Blundon
NICHOLAS GORDON BLUNDON
MAY 14, 2019
STATE OF OREGON
EXPIRES 12/31/2025

