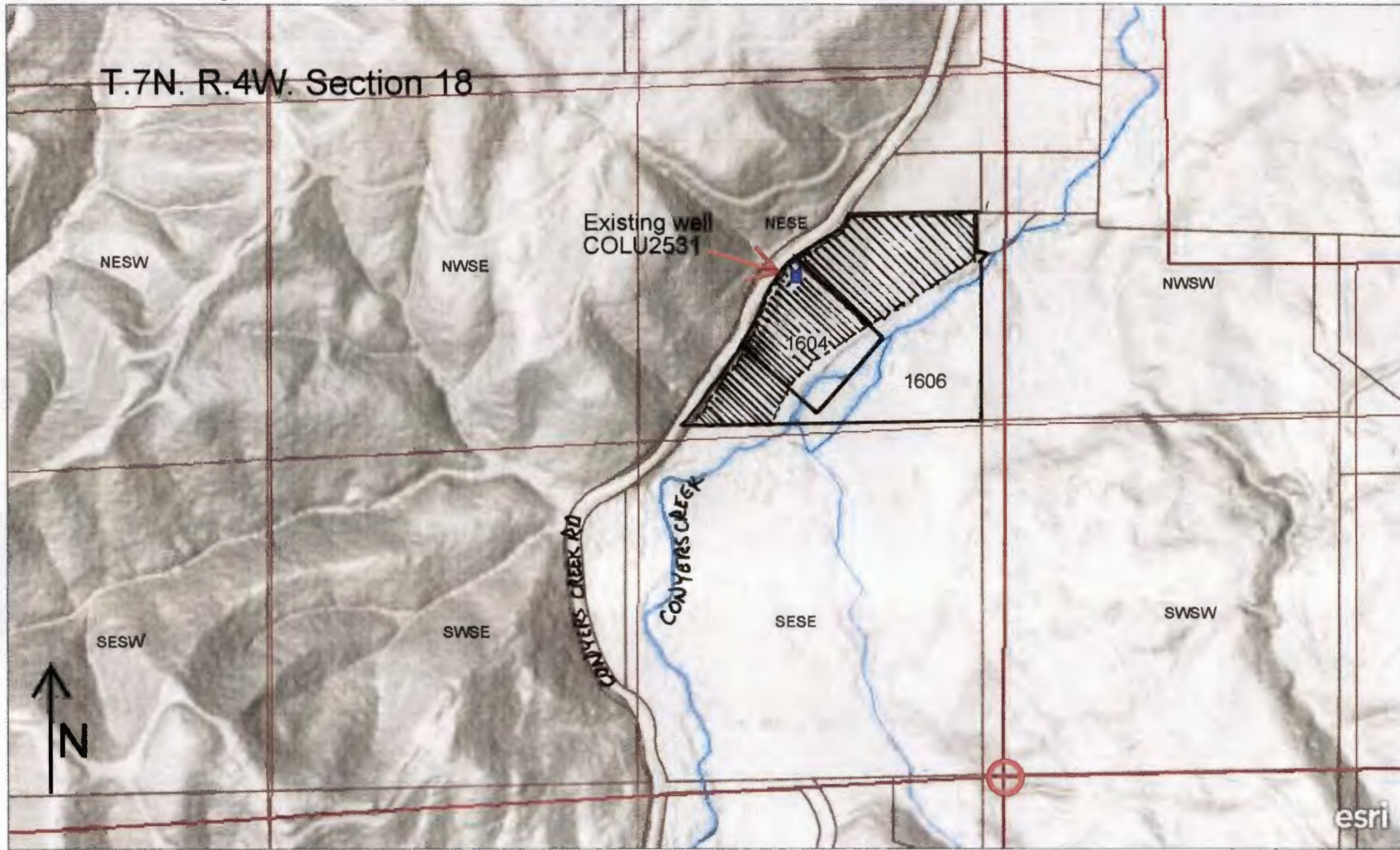


Columbia County Scale: 1"=600'



■ -- Location of existing well COLU2531 1888' N. & 758' W. of SE corner of T.7N. R.4W. Section 18

○ -- SE Corner of T.7N. R.4W. Section 18

600ft

Received by OWRD

AUG 13 2024

Salem, OR

<https://www.arcgis.com/home/webmap/print.html>

□ Taxlots 1604 and 1606 (7418-00-01604 and 7418-00-01606)

▨ Place of use = 6.58 acres in ^{NE 1/4 OF} SE 1/4 OF T.7N. R.4W. Sec 18 W.M.