

wildwood

THIS MAP WAS PREPARED FOR ASSESSMENT PURPOSE ONLY.

SW1/4 SEC.16 T.26S. R.5W. W.M. DOUGLAS COUNTY 1" = 200'

REVISED ON 8-22-11

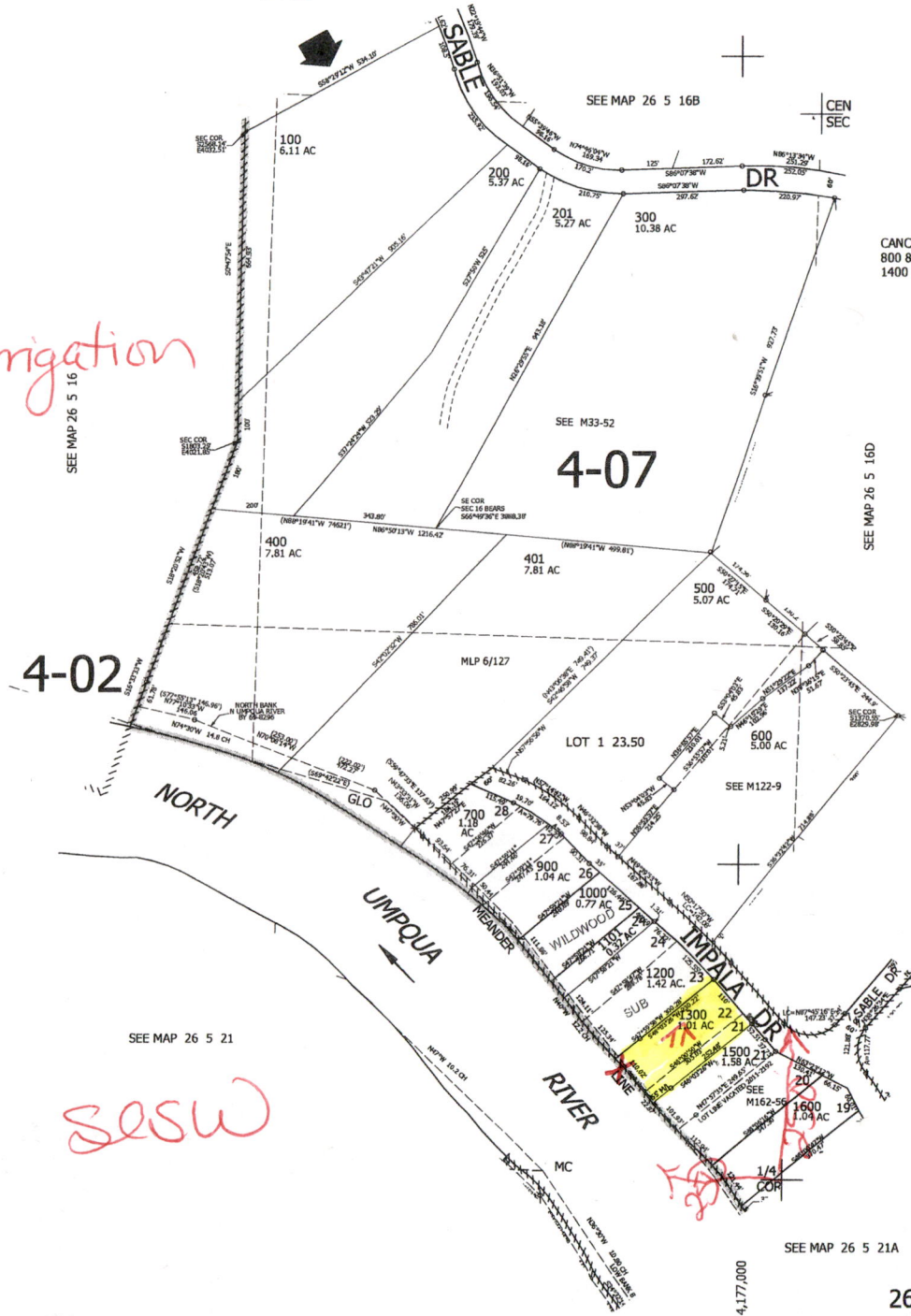
26 5 16C



Tax Lot 1300

x = pump
↑ = house ⊕ 0.5 acre irrigation

POD: 250' N & 250' W from S 1/4 corner, Section 16

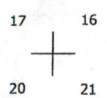


CANCELLED NO'S 800 801 1100 1400 1501

609,000

sesw

Handwritten initials/signature



4,177,000

SEE MAP 26 5 21A

26 5 16C

Received
AUG 26 2024
OWRD