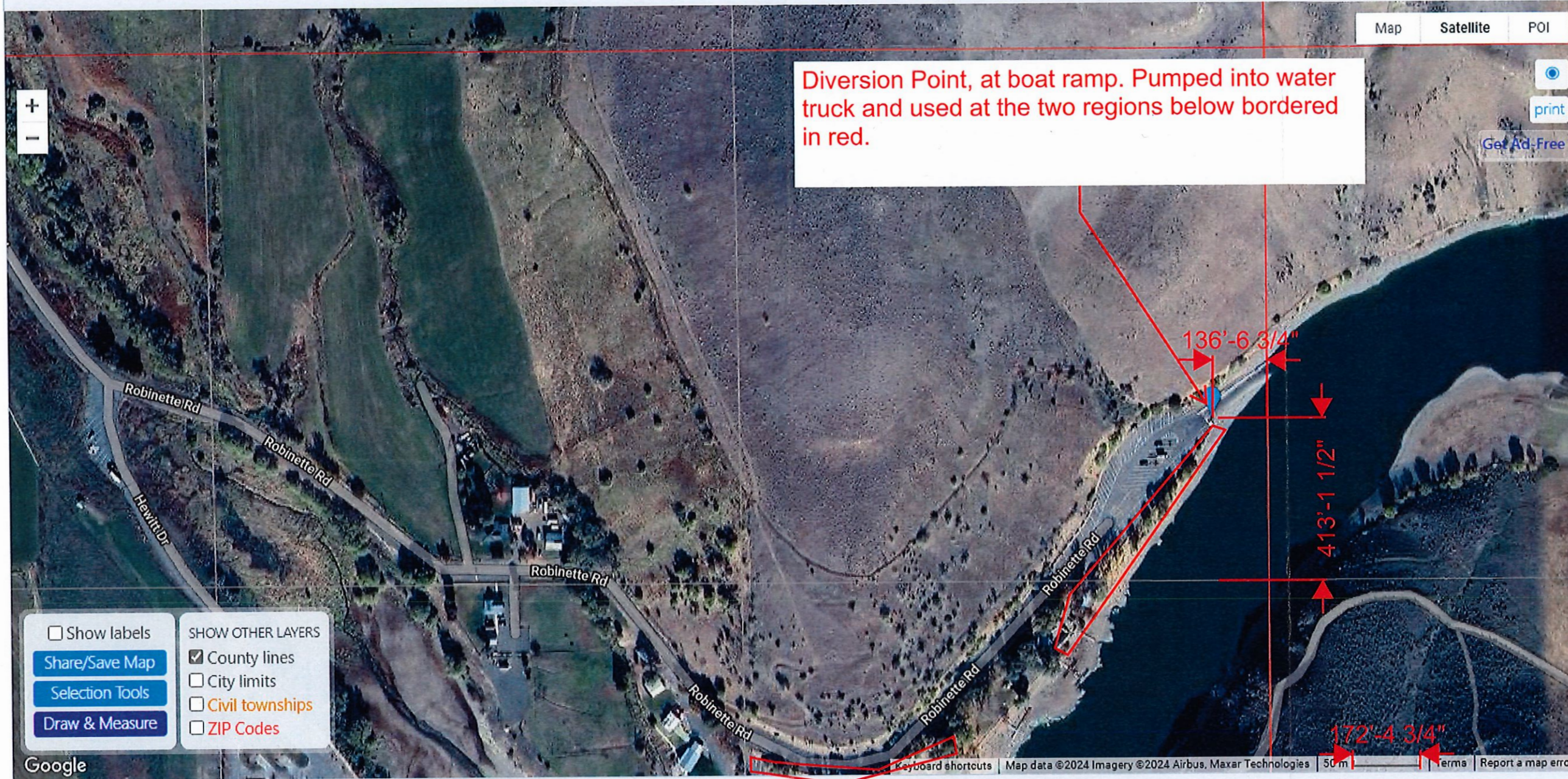


NE¼ of the NE¼ of Section 30 Township 09 South, Range 46 East Willamette Principal Meridian Oregon Baker County Area: 39.6 acres

Lat Long: 44.75935, -117.12291 Find lat long

41132 Robinette Rd, Richland, OR 97870



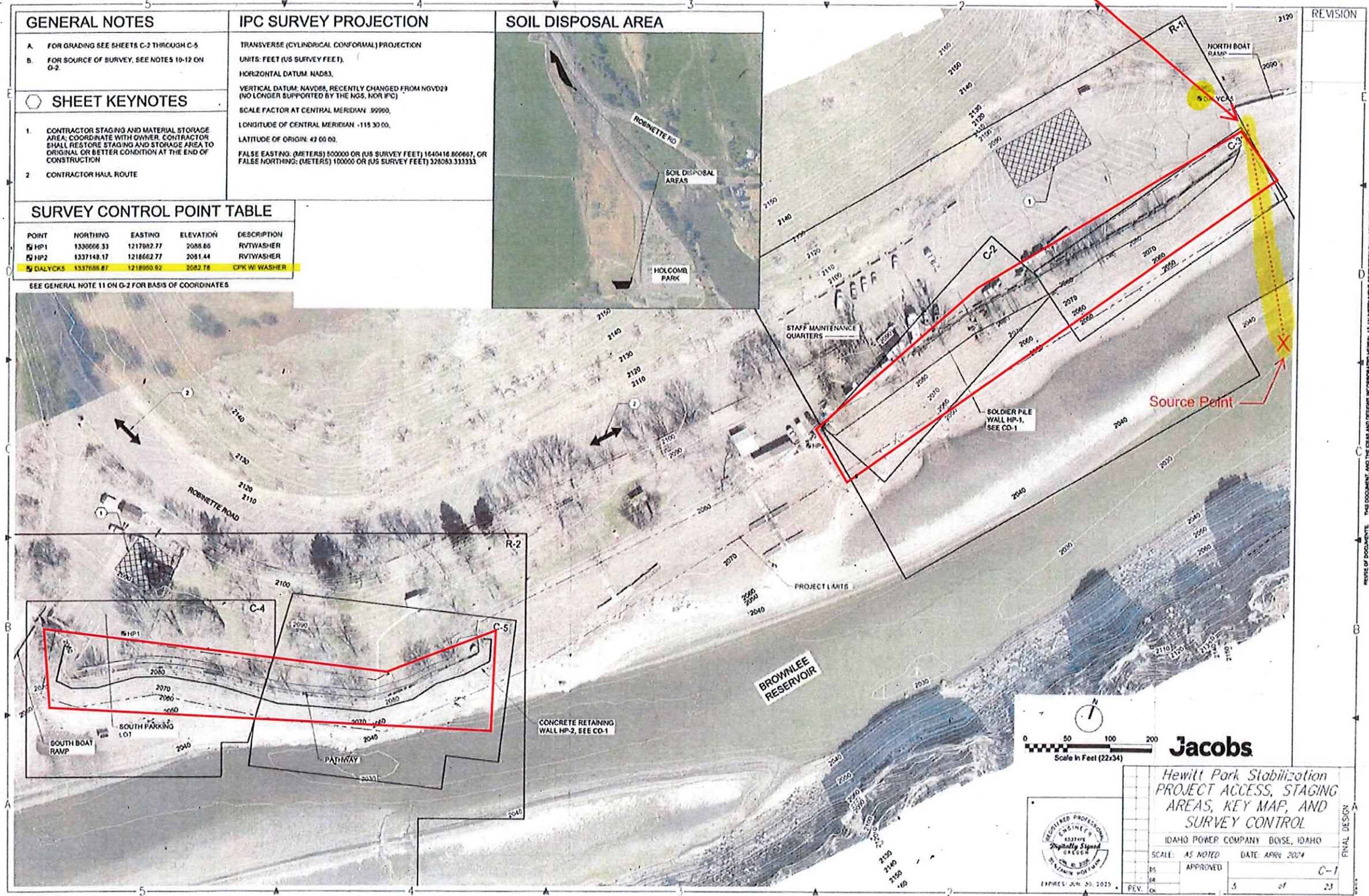
500'-0"

Township: 9 South  
 Range: 46 East  
 Section: 30, WM  
 Q/Q: NENE  
 Tax Lot: 200  
 414' N & 136' W from SE corner, NENE, section 30

RECEIVED  
 AUG 30 2024  
 OWRD

LL-1990

Diversion Point, at boat ramp. Pumped into water truck and used at the two regions below bordered in red.



LL-1990

RECEIVED  
 AUG 30 2024  
 OWRD

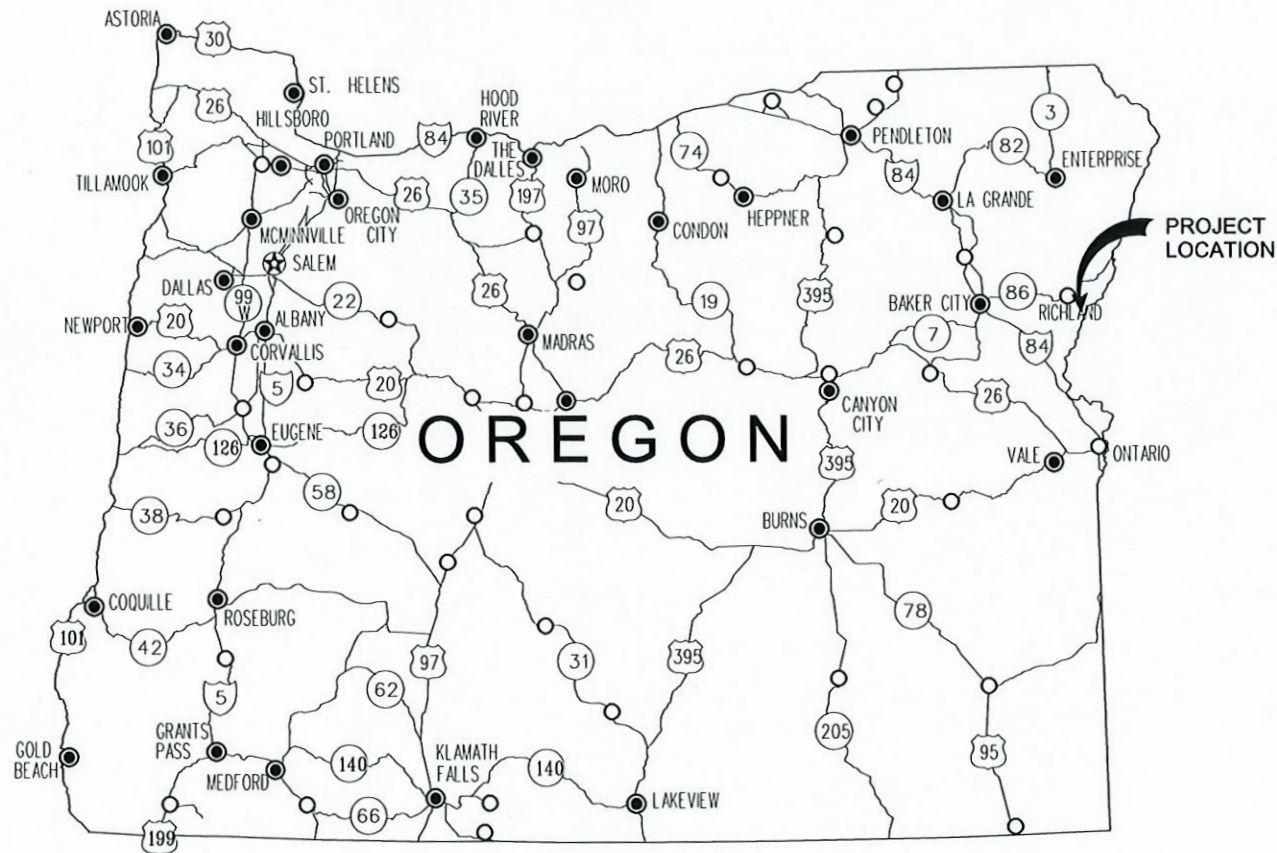
# HEWITT PARK BANK STABILIZATION

## IDAHO POWER COMPANY

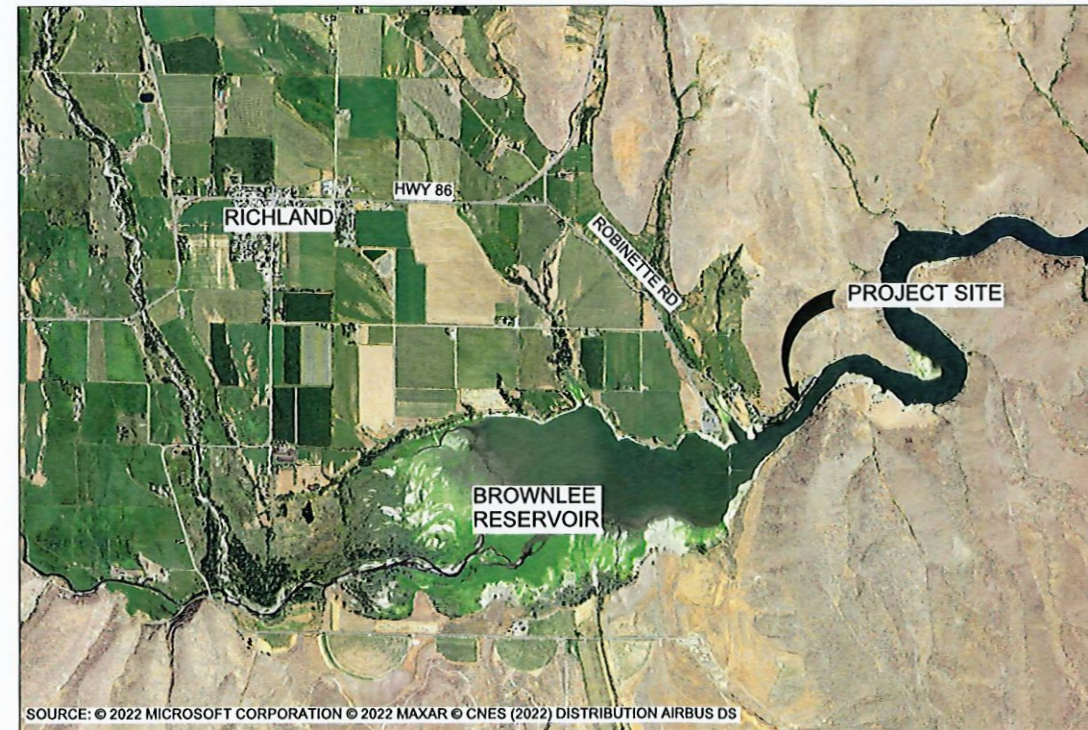
### RICHLAND, OREGON

## CONSTRUCTION DRAWINGS

### APRIL 2024



LOCATION MAP  
NTS



VICINITY MAP  
NTS

**PROJECT CONTACT LIST**

**CONTRACTING AGENCY**

IDAHO POWER COMPANY  
1221 W. IDAHO STREET  
BOISE, ID 83702

**IDAHO POWER REPRESENTATIVES**

JEFF CONNER  
JConner@idahopower.com  
(208) 388-5472

KELVIN ANDERSON  
KAnderson@idahopower.com  
(208) 388-2929

**ENGINEER(S)**

JACOBS ENGINEERING GROUP, INC.  
999 W. MAIN STREET, SUITE 1200  
BOISE, ID 83702

BEN HOFFMAN, PE  
Benjamin.Hoffman@jacobs.com  
(541) 768-3112

**PARTNER AGENCY**

BAKER COUNTY PARKS AND RECREATION  
DEPARTMENT  
1995 THIRD ST.  
BAKER CITY, OREGON 97814  
(541) 524-7480

**INDEX TO DRAWINGS**

SHEET NO.	DRAWING NO.	DRAWING TITLE
1	G-1	COVER SHEET
2	G-2	GENERAL NOTES AND ABBREVIATIONS
3	G-3	BORING LOCATIONS AND GEOPHYSICAL LINES
4	ESC-1	EROSION AND SEDIMENT CONTROL PLAN AND SOIL BORING LOCATION MAP
5	C-1	PROJECT ACCESS, STAGING AREAS, KEY MAP, AND SURVEY CONTROL
6	C-2	WALL HP-1 PLAN AND ELEVATION - 1
7	C-3	WALL HP-1 PLAN AND ELEVATION - 2
8	C-4	WALL HP-2 PLAN - 1
9	C-5	WALL HP-2 PLAN - 2
10	C-6	WALL HP-2 ELEVATION
11	CS-1	WALL HP-1 SECTIONS - 1
12	CS-2	WALL HP-1 SECTIONS - 2
13	CS-3	WALL HP-2 SECTIONS - 1
14	CS-4	WALL HP-2 SECTIONS - 2
15	CD-1	BANK STABILIZATION DETAILS
16	CD-2	SITE IMPROVEMENT DETAILS
17	SD-1	STAIRS PLAN, SECTION, AND NOTES
18	SD-2	STAIR DETAILS - 1
19	SD-3	STAIR DETAILS - 2
20	R-1	HP-1 NORTHERN AREA REVEGETATION PLAN
21	R-2	HP-2 SOUTHERN AREA REVEGETATION PLAN
22	RD-1	REVEGETATION DETAILS
23	D-1	VEGETATION REMOVAL

Received by OWRD

AUG 19 2024

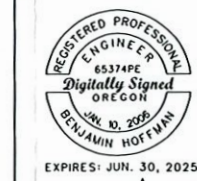
Salem, OR  
**Jacobs**

*Hewitt Park Stabilization*

*COVER SHEET*

IDAHO POWER COMPANY BOISE, IDAHO

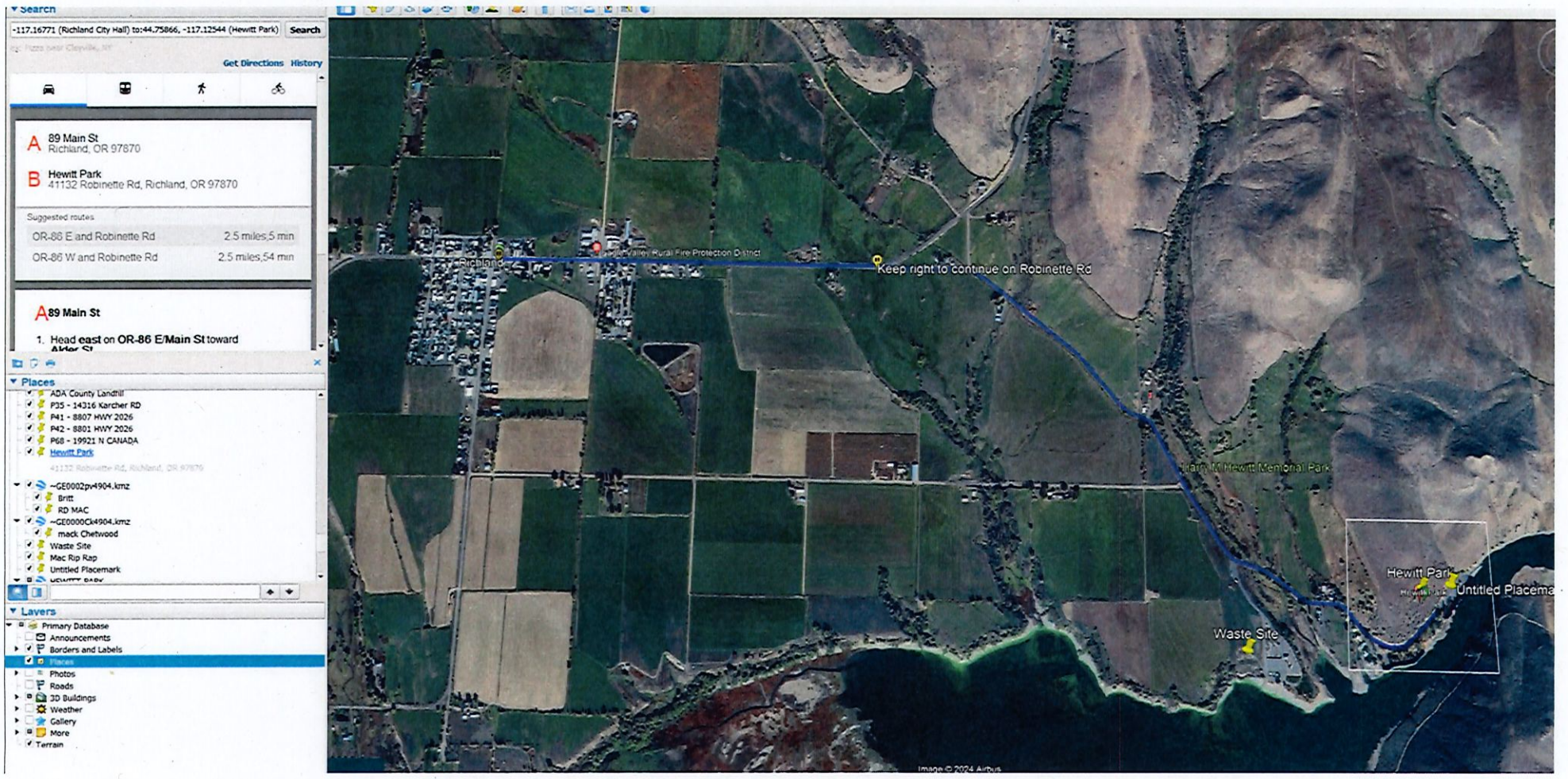
SCALE: AS NOTED DATE: APRIL 2024



DS	APPROVED	G-1
DR		
REV.	1	of 23

REVISION  
© JACOBS 2022. ALL RIGHTS RESERVED.  
THIS DOCUMENT AND THE IDEAS AND DESIGNS INCORPORATED HEREIN, AS AN INSTRUMENT OF PROFESSIONAL SERVICE, IS THE PROPERTY OF JACOBS AND IS NOT TO BE USED, IN WHOLE OR IN PART, FOR ANY OTHER PROJECT WITHOUT THE WRITTEN AUTHORIZATION OF JACOBS.

LL-1990



RECEIVED  
AUG 30 2024  
OWRD

LL-1990



RECEIVED  
AUG 30 2024  
OWRD

LL-1990

NGS Map 41132 Robinette Rd, Richland, X

Show search results for 411...

2376 ft

Robinette Rd

Immigrant Gulch

North Young Birch

Robinette Rd

**Datasheet**

Datasheet	<a href="#">More info</a>
Mark Recovery	<a href="#">More info</a>
Passive Mark Page	<a href="#">More info</a>
PID	QB0611
Name	Q 403
Google Maps / Street View	<a href="#">More info</a>
Position Source	SCALED
Vertical Source	ADJUSTED
Vertical Order	2
Vertical Class	0
Stability	8
Satellite Usable	
Marker	DB = BENCH MARK
<a href="#">Zoom to</a>	...

RECEIVED  
 AUG 30 2024  
 OWRD

LL-1990