

THIS MAP WAS PREPARED FOR ASSESSMENT PURPOSE ONLY

SECTION 15 T3S R2W W.M.
YAMHILL COUNTY

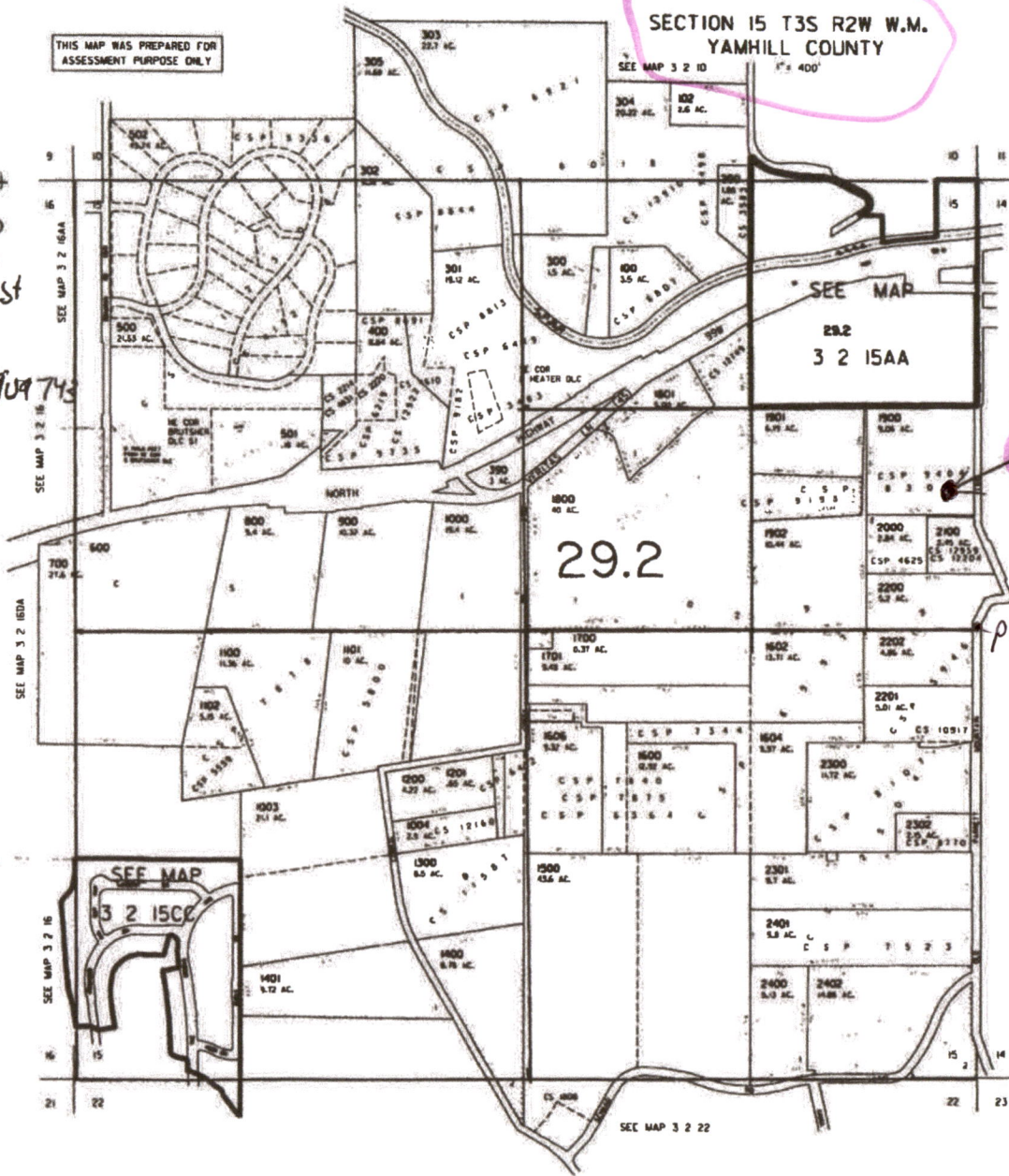
3 2 15
& INDEX

- CANCELLED
- 401
- 503
- 1001
- 1002
- 1005
- 1601
- 1603
- 1605
- 1903
- 2500

* Reservoir is southeast quarter of the northeast quarter and approx. 250 feet west and 1750 feet south from the northeast corner of section 15

GPS 45.312 314N-122904743

Dam coordinates to center of reservoir



proposed reservoir

public land survey corner



Scale: 1" = 1000 ft.

3 2 15

Received
AUG 29 2024
OWRD