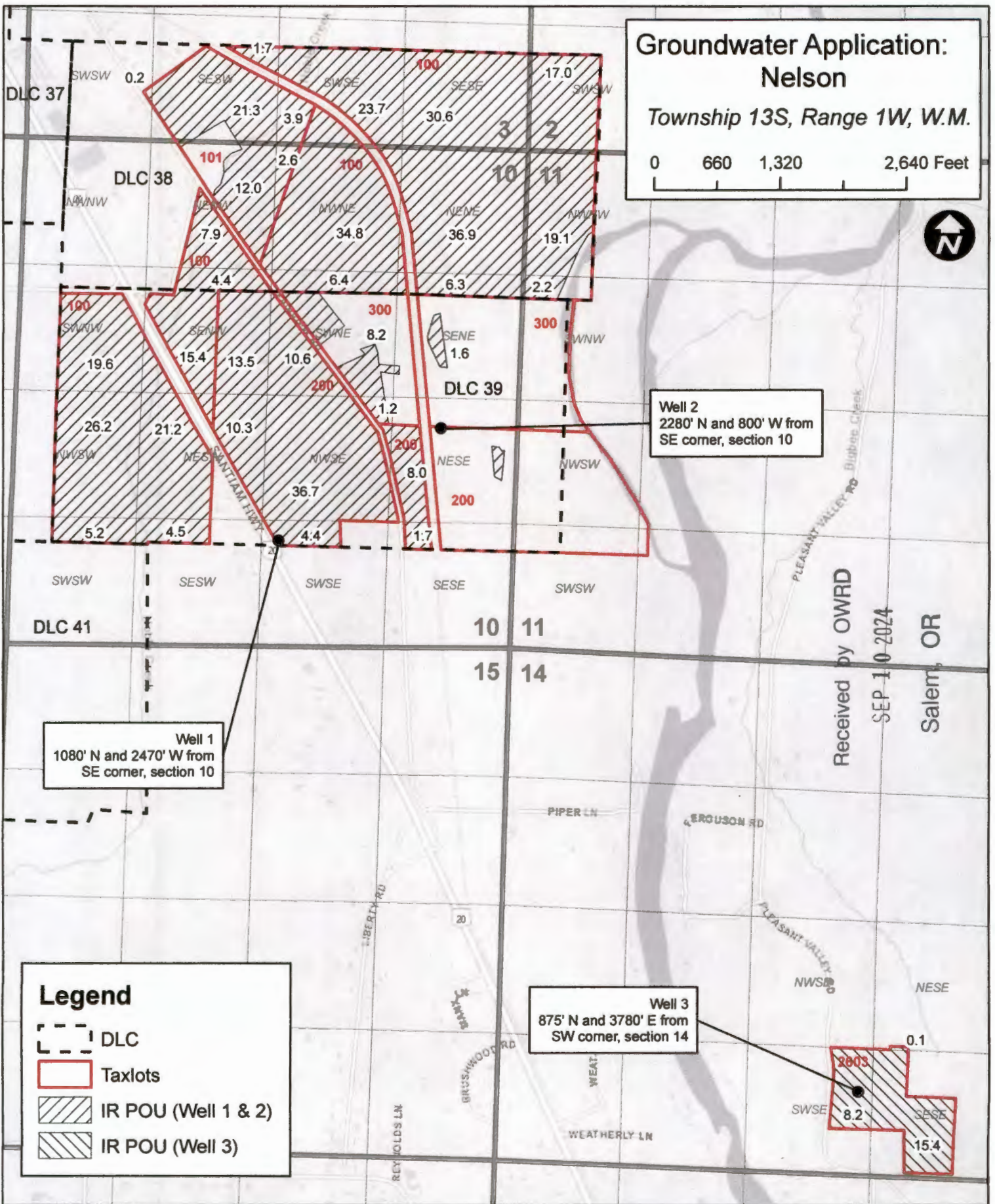


Groundwater Application: Nelson

Township 13S, Range 1W, W.M.

0 660 1,320 2,640 Feet



Well 2
2280' N and 800' W from
SE corner, section 10

Well 1
1080' N and 2470' W from
SE corner, section 10

Well 3
875' N and 3780' E from
SW corner, section 14

Legend

- DLC
- Taxlots
- IR POU (Well 1 & 2)
- IR POU (Well 3)

Received by OWRD
SEP 10 2024
Salem, OR