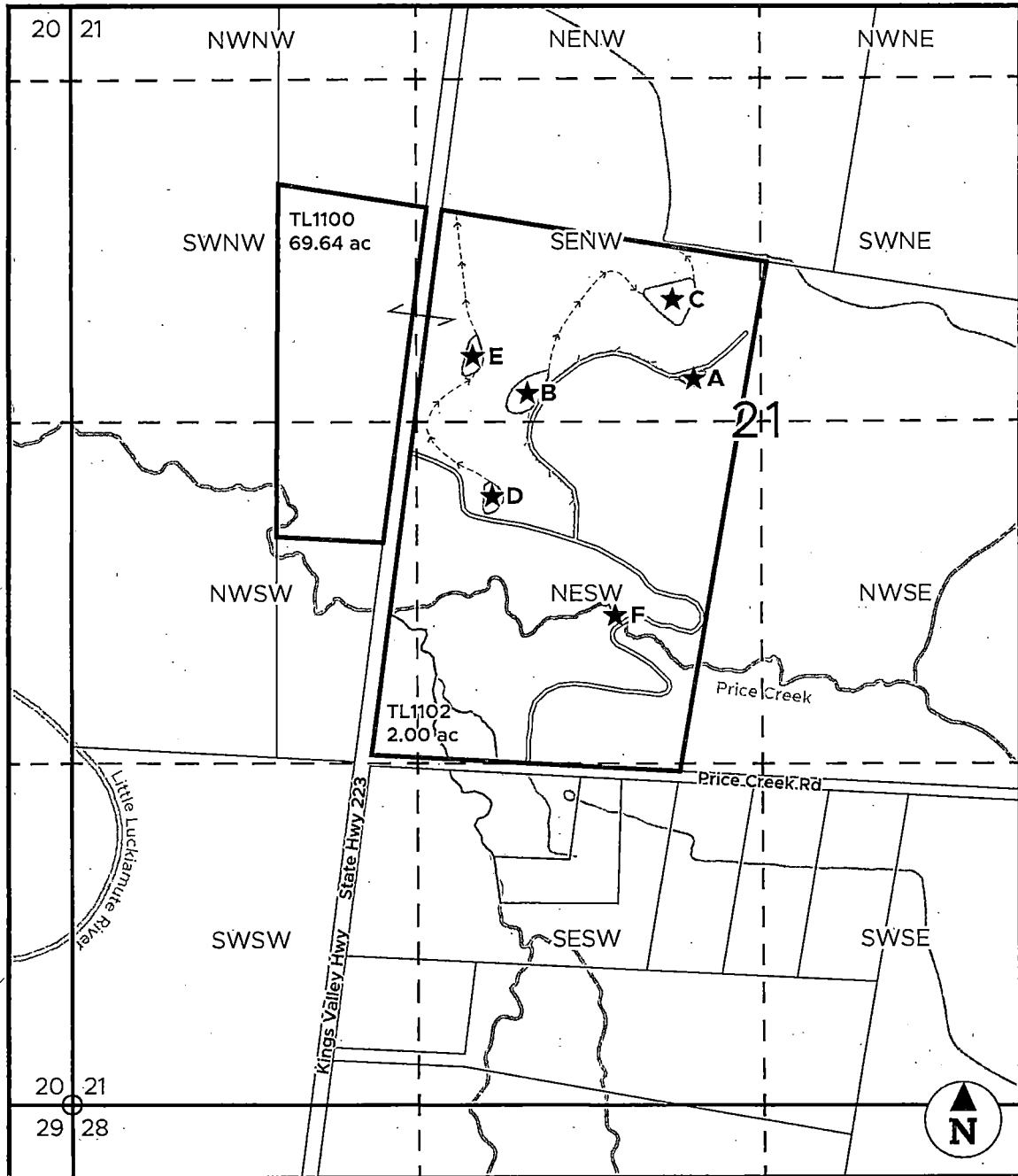


**T.10S. R.6W. Section 21**  
 BENTON COUNTY

1" = 600 ft



- ★ Pond A is 165 ft north and 260 ft west from the center of Section 21.
- ★ Pond B is 112 ft north and 905 ft west from the center of Section 21.
- ★ Pond C is 470 ft north and 340 ft west from the center of Section 21.
- ★ Pond D is 290 ft south and 1,040 ft west from the center of Section 21.
- ★ Pond E is 250 ft north and 1,115 ft west from the center of Section 21.
- ★ Point of Diversion F is 750 ft south and 565 ft west from the center of Section 21.

Received by OWRD

SEP 13 2024

Salem, OR