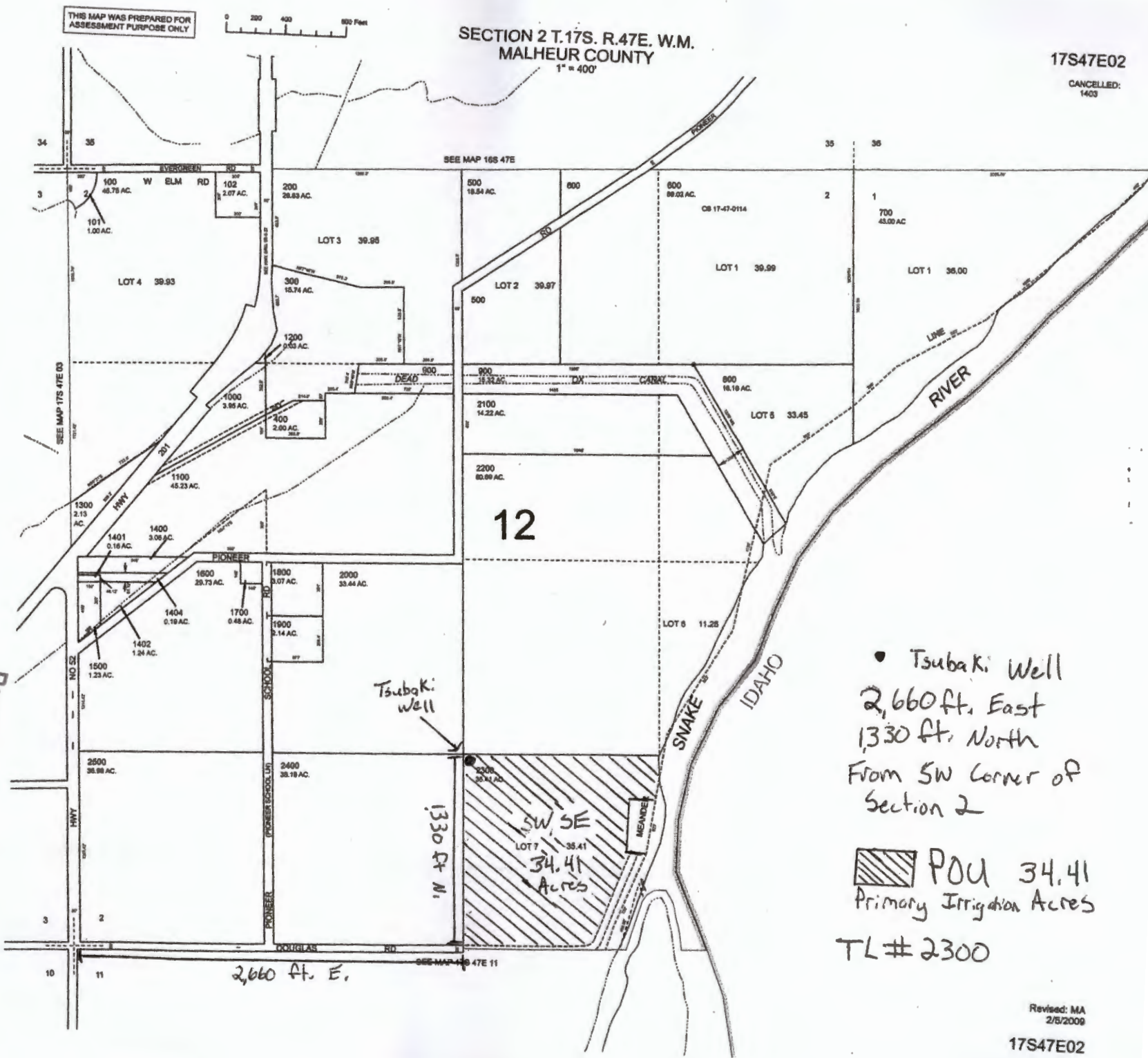


THIS MAP WAS PREPARED FOR ASSESSMENT PURPOSE ONLY

0 200 400 600 Feet

SECTION 2 T.17S. R.47E. W.M. MALHEUR COUNTY 1" = 400'

17S47E02 CANCELLED: 1403



Received
SEP 12 2024
OWRD

Received by OWRD
SEP 16 2024
Salem, OR

• Tsubaki Well
2,660 ft. East
1,330 ft. North
From SW Corner of
Section 2

POU 34.41
Primary Irrigation Acres

TL# 2300