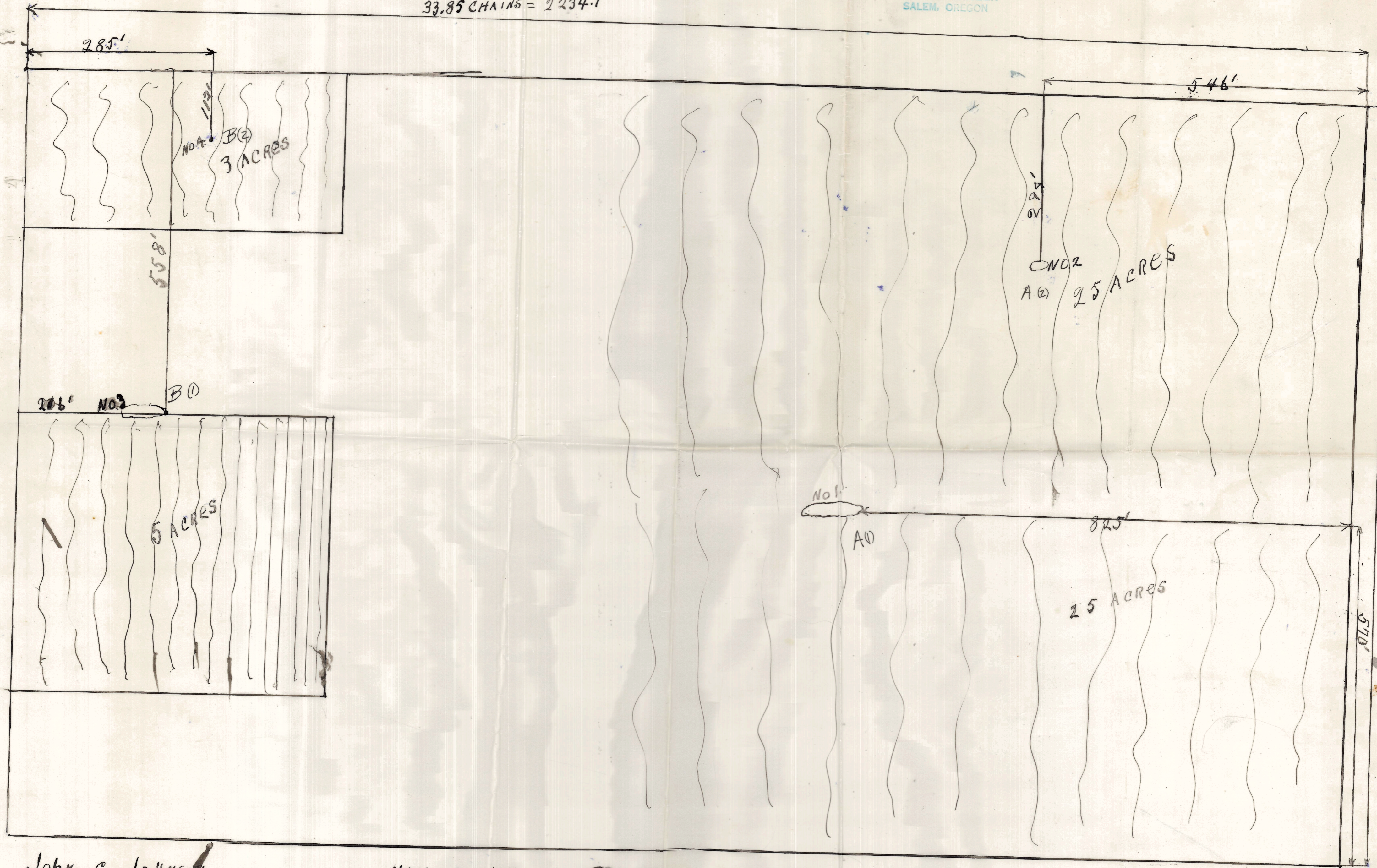


N 1/4 CORNER  
S. 13  
8/21

RECEIVED  
DEC 23 1957  
STATE ENGINEER  
SALEM, OREGON

33.85 CHAINS = 2234.1'



John C. JOHNSON  
Route 4 Box 118  
EUBENE ORE. FARM

- NO. 1 INFILTRATION TRENCH
- NO. 2 INFILTRATION TRENCH
- NO. 3 INFILTRATION TRENCH
- NO. 4 DRIVEN WELL

SCALE 100 FT TO INCH

Sec. 13 TOWNSHIP 18 S. RANGE 3 W DATE DRAWN JULY 10 1957