

SECTION 36, T.1N., R.1W., W.M.
 AND
 SECTION 1, T.1S., R.1W., W.M.

Map No. R-83818
 No. R-12742

RECEIVED
 APR 29 1998
 WATER RESOURCES DEPT.
 SALEM, OREGON

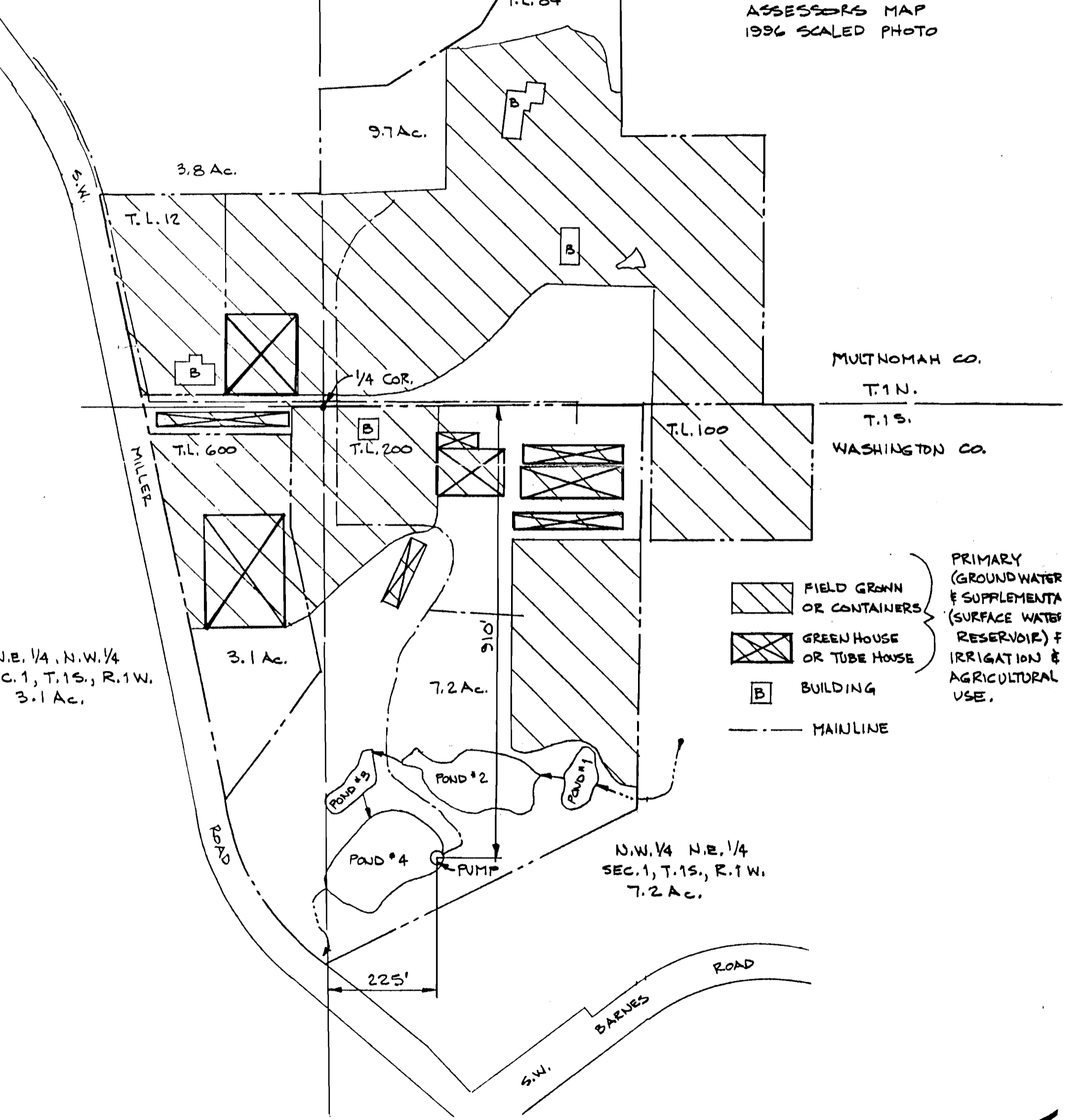


SCALE: 1" = 200'

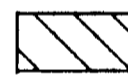
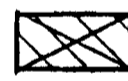

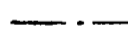
MAP BASE:
 ASSESSORS MAP
 1996 SCALED PHOTO

S.E. 1/4 S.W. 1/4,
 SEC. 36, T.1N., R.1W.
 3.8 Ac.

S.W. 1/4, S.E. 1/4
 SEC. 36, T.1N., R.1W.
 9.7 Ac.



MULTNOMAH CO.
 T.1N.
 T.1S.
 WASHINGTON CO.

-  FIELD GROWN OR CONTAINERS
-  GREEN HOUSE OR TUBE HOUSE
-  BUILDING
-  MAINLINE

PRIMARY
 (GROUND WATER & SUPPLEMENTA
 (SURFACE WATER RESERVOIR) &
 IRRIGATION & AGRICULTURAL
 USE.

N.E. 1/4, N.W. 1/4
 SEC. 1, T.1S., R.1W.
 3.1 Ac.

N.W. 1/4 N.E. 1/4
 SEC. 1, T.1S., R.1W.
 7.2 Ac.

TEUFEL HOLLY FARMS INC.

160 S.W. MILLER ROAD
 PORTLAND, OREGON 97225

