


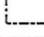



LEGEND

-  Supplemental Irrigation POU Requested
-  Proposed well
-  Buried Mainline
-  Baker County Taxlot Boundary

Received
SEP 23 2024
OWRD

Notes:


N2: 311 ft E and 209 ft N from the SW Corner of Section 25 (T 7S, R 39 E)
 N3: 3,650 ft E and 1,450 ft S from the SW Corner of Section 25 (T 7S, R 39 E)
 N1: 4,980 ft E and 3,451 ft N from the SW Corner of Section 25 (T 7S, R 39 E)
 N4: 1,103 ft W and 3,904 ft N from the SE Corner of Section 36 (T 7S, R 39 E)
 N5: 340 ft W and 1,726 ft N from the SE Corner of Section 36 (T 7S, R 39 E)
 N8: 1,528 ft E and 2,504 ft N from the SE Corner of Section 36 (T 7S, R 39 E)
 N6: 4,356 ft W and 863 ft N from the SE Corner of Section 36 (T 7S, R 39 E)
 E1: 2,489 ft E and 240 ft S from the NW Corner of Section 5 (T 8S, R 40 E)
 N7: 2,518 ft W and 326 ft N from the NE Corner of Section 2 (T 8S, R 39 E)
 N6: 920 ft E and 934 ft N from the NE Corner of Section 2 (T 8S, R 39 E)
 S3: 1,324 ft W and 16 ft N from the SW Corner of Section 7 (T 8S, R 39 E)
 S1: 2,256 ft E and 1,832 ft N from the SW Corner of Section 7 (T 8S, R 39 E)
 S2: 1,068 ft E and 223 ft N from the SW Corner of Section 8 (T 8S, R 39 E)



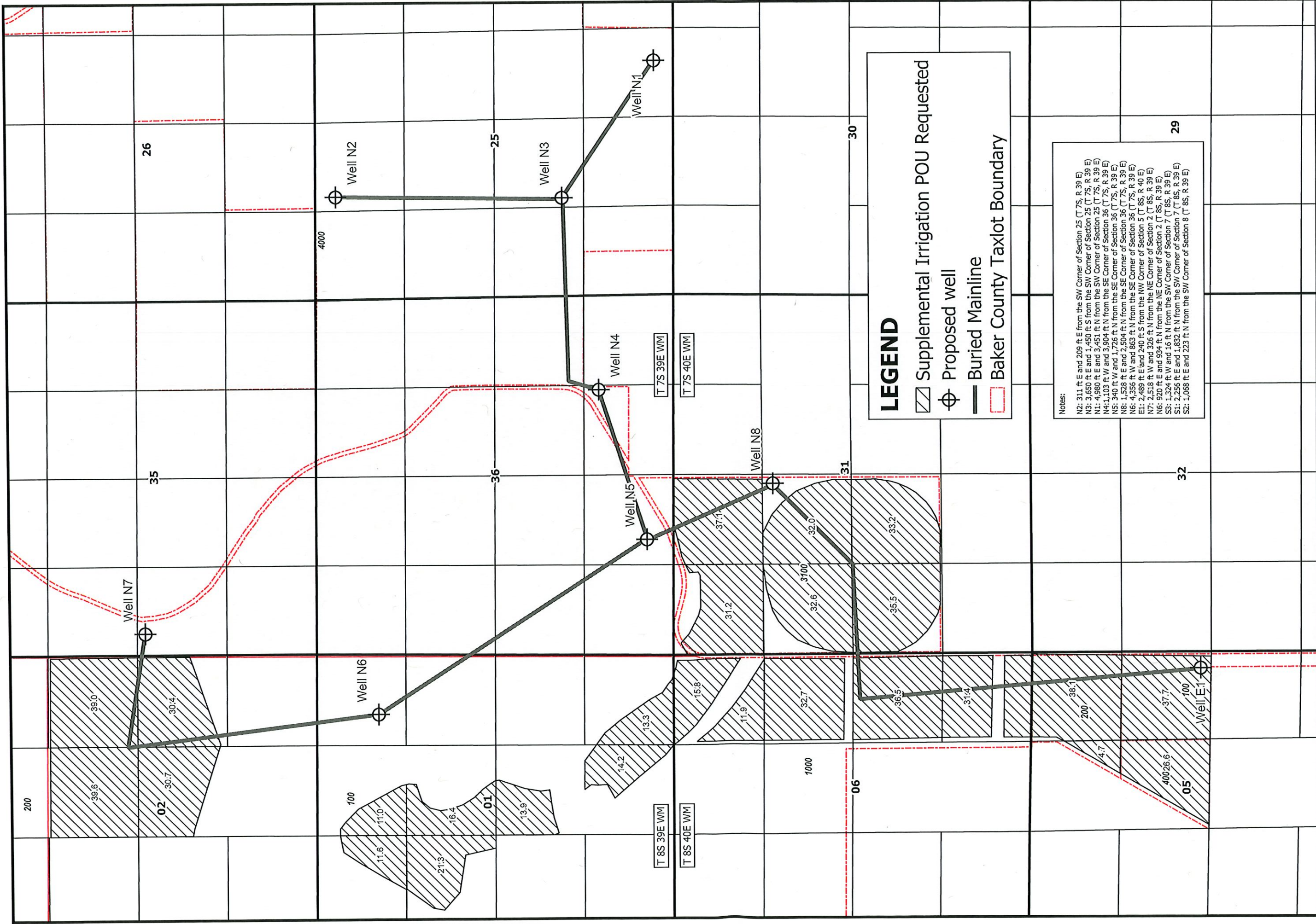
**Map to Accompany Application
for Permit to Use Groundwater
Baker County, OR**

Prepared on behalf of The DLX Ranch

1 inch = 0.5 mile



Date: 9/18/2024
Drawn by: Paul F. Garvin



LEGEND

- Supplemental Irrigation POU Requested
- Proposed well
- Buried Mainline
- Baker County Taxlot Boundary

Notes:
 N2: 311 ft E and 209 ft E from the SW Corner of Section 25 (T 7S, R 39 E)
 N3: 3,650 ft E and 1,450 ft S from the SW Corner of Section 25 (T 7S, R 39 E)
 N1: 4,980 ft E and 3,451 ft N from the SW Corner of Section 25 (T 7S, R 39 E)
 N4: 1,103 ft W and 3,904 ft N from the SE Corner of Section 36 (T 7S, R 39 E)
 N5: 340 ft W and 1,726 ft N from the SE Corner of Section 36 (T 7S, R 39 E)
 N8: 1,528 ft E and 2,504 ft N from the SE Corner of Section 36 (T 7S, R 39 E)
 N6: 4,356 ft W and 863 ft N from the SE Corner of Section 36 (T 7S, R 39 E)
 E1: 2,489 ft E and 240 ft S from the NW Corner of Section 5 (T 8S, R 40 E)
 N7: 2,518 ft W and 328 ft N from the NE Corner of Section 2 (T 8S, R 39 E)
 N6: 920 ft E and 934 ft N from the NE Corner of Section 2 (T 8S, R 39 E)
 S3: 1,324 ft W and 16 ft N from the SW Corner of Section 7 (T 8S, R 39 E)
 S1: 2,256 ft E and 1,832 ft N from the SW Corner of Section 7 (T 8S, R 39 E)
 S2: 1,068 ft E and 223 ft N from the SW Corner of Section 8 (T 8S, R 39 E)

Garvin HydroGeo LLC

Detail Map 2 of 2 to Accompany Application for Permit to Use Groundwater Baker County, OR

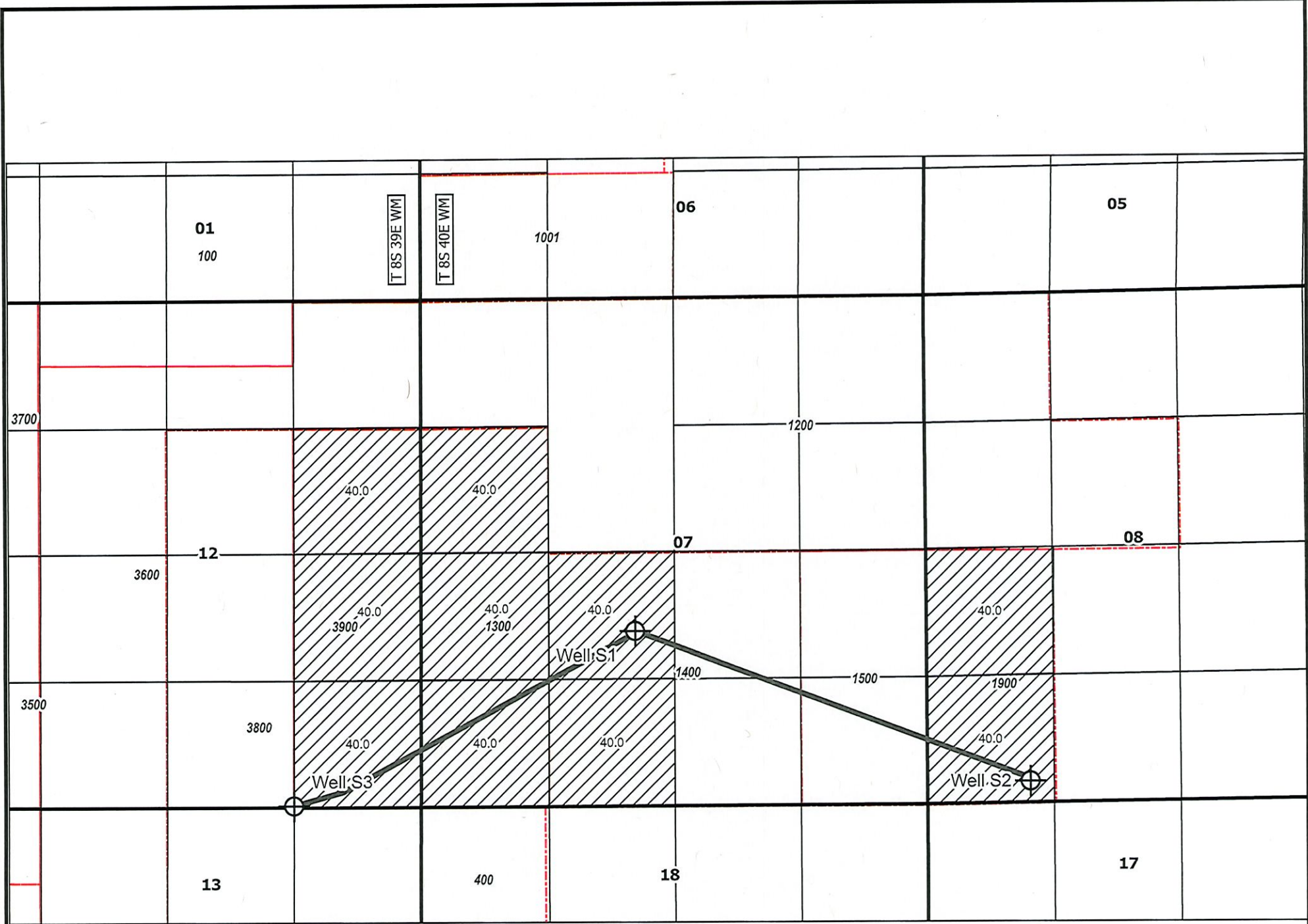
Prepared on behalf of The DLX Ranch

1 inch = 0.25 mile

N

Received by OWRD
 SEP 30 2024
 Salem, OR


Date: 9/26/2024
 Drawn by: Paul F. Garvin



LEGEND

-  Supplemental Irrigation POU Requested
-  Proposed well
-  Buried Mainline
-  Baker County Taxlot Boundary


Received by OWRD
 SEP 30 2024
 Salem, OR



**Detail Map 1 of 2 to Accompany
 Application for Permit to Use
 Groundwater
 Baker County, OR**

Prepared on behalf of The DLX Ranch

1 inch = 0.25 mile



Date: 9/26/2024
 Drawn by: Paul F. Garvin

Notes:

N2: 311 ft E and 209 ft E from the SW Corner of Section 25 (T 7S, R 39 E)
 N3: 3,650 ft E and 1,450 ft S from the SW Corner of Section 25 (T 7S, R 39 E)
 N1: 4,980 ft E and 3,451 ft N from the SW Corner of Section 25 (T 7S, R 39 E)
 N4: 1,103 ft W and 3,904 ft N from the SE Corner of Section 36 (T 7S, R 39 E)
 N5: 340 ft W and 1,726 ft N from the SE Corner of Section 36 (T 7S, R 39 E)
 N8: 1,528 ft E and 2,504 ft N from the SE Corner of Section 36 (T 7S, R 39 E)
 N6: 4,356 ft W and 863 ft N from the SE Corner of Section 36 (T 7S, R 39 E)
 E1: 2,489 ft E and 240 ft S from the NW Corner of Section 5 (T 8S, R 40 E)
 N7: 2,518 ft W and 326 ft N from the NE Corner of Section 2 (T 8S, R 39 E)
 N6: 920 ft E and 934 ft N from the NE Corner of Section 2 (T 8S, R 39 E)
 S3: 1,324 ft W and 16 ft N from the SW Corner of Section 7 (T 8S, R 39 E)
 S1: 2,256 ft E and 1,832 ft N from the SW Corner of Section 7 (T 8S, R 39 E)
 S2: 1,068 ft E and 223 ft N from the SW Corner of Section 8 (T 8S, R 39 E)