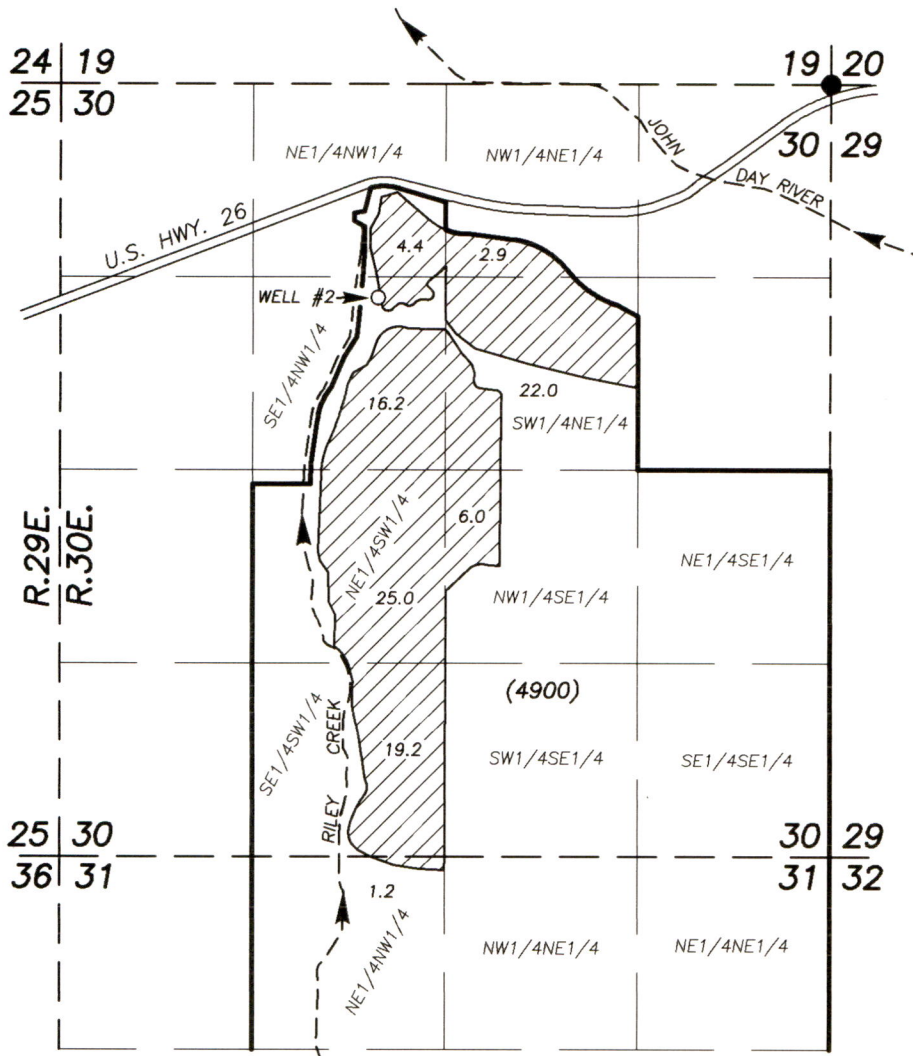


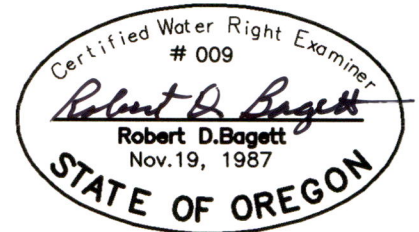
T.13S., R.30E., W.M., GRANT COUNTY, OREGON
 CLAIM OF BENEFICIAL USE MAP
 UNDER TRANSFER NO. T-11981

FOR
 RILEY CREEK RANCH, LLC



SCALE: 1" = 1320'

PREPARED BY:
 ROBERT D. BAGETT, PLS, CWRE
 217 N. CANYON BLVD.
 JOHN DAY, OREGON
 (541) 620-0717
 (541) 575-1251
 AUGUST 1, 2024



RENEWS 12/31/2025

○ WELL #2: 1460 FT. SOUTH & 3100 FT. WEST FROM THE NE COR.
 SECTION 30, T.13S., R.30E.,
 FROM WHICH THE FLOW METER BEARS, SOUTH, 7 FT.

▨ SUPPLEMENTAL IRRIGATION - 96.9 AC. SPECIAL ORDER VOL. 101, PAGE 238

() TAX LOT NO.

● FOUND BRASS CAP MONUMENT AT THE NE
 CORNER SECTION 30, T.13S., R.30E.

Received

SEP 30 2024

OWRD