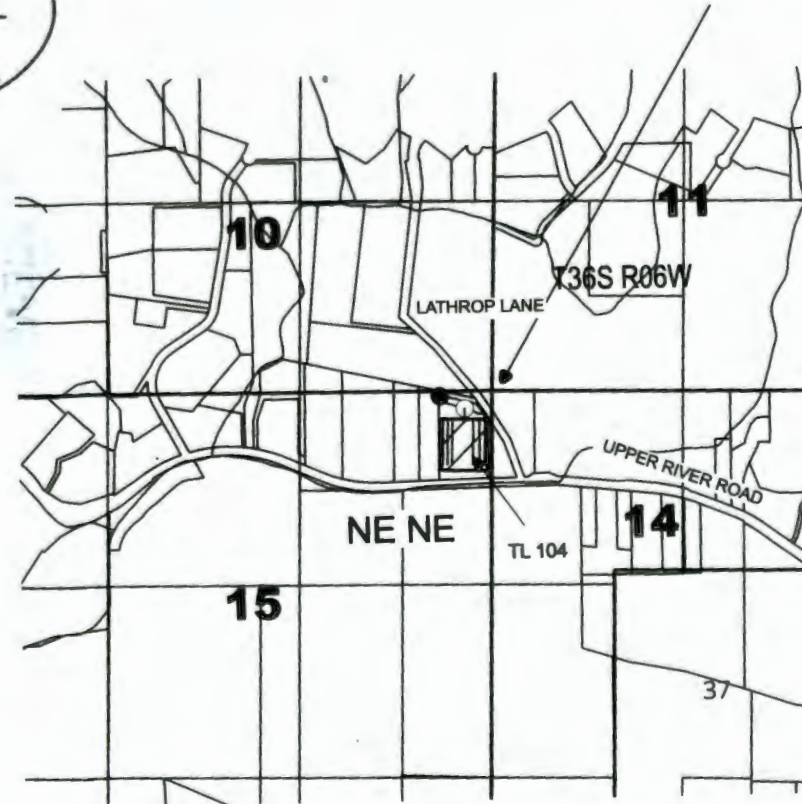


NE CORNER  
SECTION 15




BRANDY LECHUGA  
3810 UPPER RIVER RD  
GRANTS PASS, OR 97527

CLAIM OF BENEFICIAL USE  
R-13981 (APPL. NO. R-85941)  
S-54118 (APPL. NO. S-85940)

SITUATED IN  
SECTION 15, TOWNSHIP 36 S  
RANGE 6 W, W.M.  
JOSEPHINE COUNTY OREGON

LEGEND

- R-13981 POD AND OUTLET PIPES  
35' SOUTH and 355' WEST  
OF NE 1/4 CORNER  
SECTION 15, T36S R6W
- S-54118 POD AND METER  
120' SOUTH and 185' WEST  
OF NE 1/4 CORNER  
SECTION 15, T36S R6W
-  GRAPE VINEYARD  
3 ACS NE NE SECTION 15
- PIPELINES



0 1320 ft



This map is not intended to provide  
legal dimensions or locations of  
property ownership lines

ParsonsWater Consulting LLC  
rick.parsons@parsonwater.com  
541.499.0257 303.667.5067