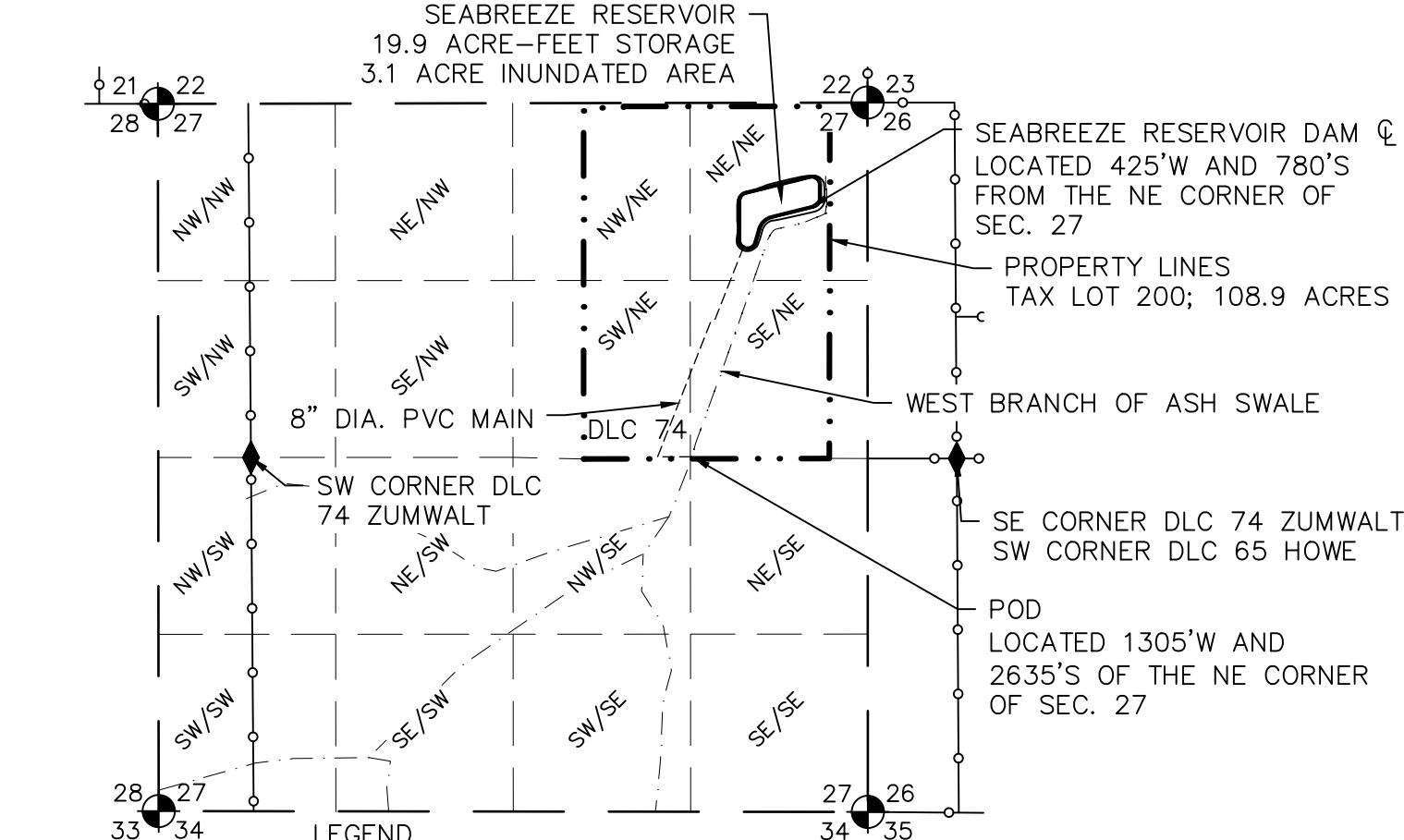


E-RECEIVED
OCT 4, 2024
OWRD

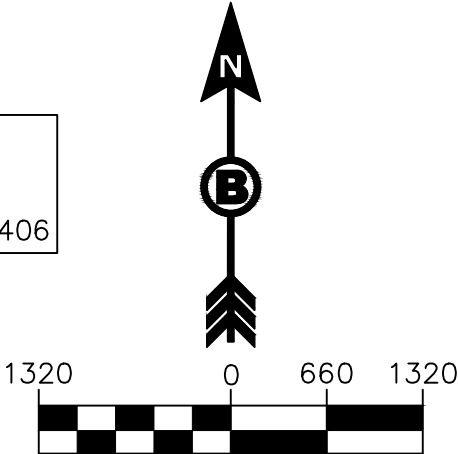
RESERVOIR APPLICATION MAP ALTERNATE PROCESS

T6S, R5W, SECTION 27, TAX LOT 200 W.M.
 12100 BECK ROAD, DALLAS, OREGON 97338
 POLK COUNTY



- LEGEND**
- SECTION LINE
 - - - 1/4 1/4 LINE
 - ○ ○ ○ ○ DLC LINE
 - · · · · · PROPERTY LINE
 - - - - - TRIBUTARY
 - ⊙ SECTION CORNER
 - ◆ DLC CORNER
 - - - - - 8" DIA. PVC GRAVITY MAIN

APPLICANT:
 GRAPEVINE CAPITAL, INC.
 PO BOX 12958
 SAN LUIS OBISPO, CA 93406



BLUNDON ENGINEERING, LLC.
 PO BOX 786
 HILLSBORO, OREGON 97123
 541-510-5910
 NICK@BLUNDONENGINEERING.COM
 DWG: RESERVOIR APP-B
 DATE: 10-4-2024

MAP BASED ON TAX MAP 6S 5 27
 AND USGS QUAD MAP

NOTE: THIS MAP IS PRODUCED TO
 APPLY FOR THE BENEFICIAL USE OF A
 WATER RIGHT. IT IS NOT INTENDED TO
 PROVIDE INFORMATION RELATIVE TO THE
 LOCATION OF PROPERTY LINES.

Certified Water Right Examiner
 #83725
Nicholas G. Blundon
 NICHOLAS GORDON BLUNDON
 MAY 14, 2019
 STATE OF OREGON
 EXPIRES 12/31/2025

