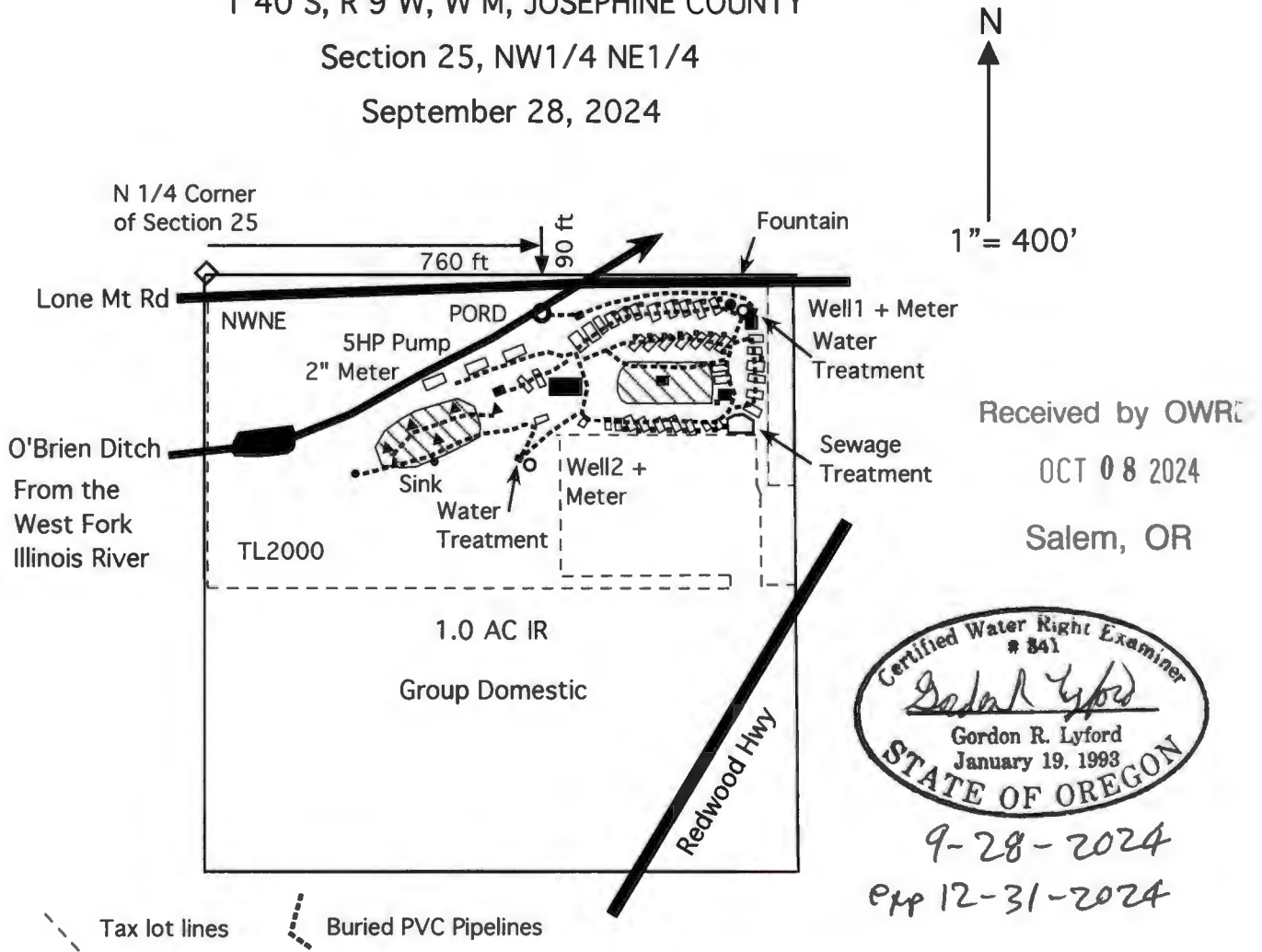


CLAIM OF BENEFICIAL USE MAP FOR T-13592

T 40 S, R 9 W, W M, JOSEPHINE COUNTY

Section 25, NW1/4 NE1/4

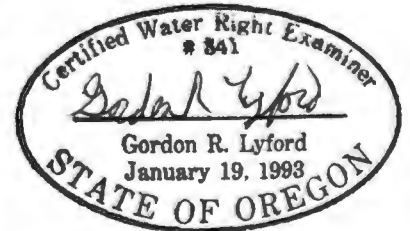
September 28, 2024



Received by OWR







OCT 08 2024

Salem, OR



9-28-2024

Exp 12-31-2024

-  Tax lot lines
-  Buried PVC Pipelines
-  Point of re-diversion (PORD) from the O'Brien Ditch, 5 HP pump, and 2" water meter. The PORD is 90 feet south and 760 feet east from the north 1/4 corner of Section 25. The PORD on the West Fork Illinois River and the ODFW fish screen are shown on the transfer map.
-  Well1 - JOSE#59705 and Well2 - JOSE#60550.
-  1.0 acre of primary irrigation rights from the West Fork Illinois River under application S-6998 and permit S-4471 with a priority of February 17, 1920 at a rate of 0.0125 cfs and a duty of 3.5 acre feet. The 26 small squares are 0.01 acre lawns at RV slots.
-  Group domestic uses from the West Fork Illinois River under application S-6998 and permit S-4471 with a priority of February 17, 1920 at a rate of 0.0125 cfs and a duty of 3.5 acre-feet during April 1 through October 31. Uses are in and around 42 RV slots, 5 tipis, the lodge, 3 pump houses, bathrooms, restrooms, laundry, a fountain, a sink, and the office.

This map was drawn by Gordon R. Lyford for James Beard, trustee of Trin Corp Roth 401K - Lone Mountain Resort Park LLC to support his claim of beneficial use under water right transfer 13592 to change the irrigation place of use and character of use. Lone Mountain Resort Park LLC owns tax lot 2000.

This map was prepared for the purpose of identifying the location of water rights only and is not intended to provide legal dimensions or the location of property ownership lines.