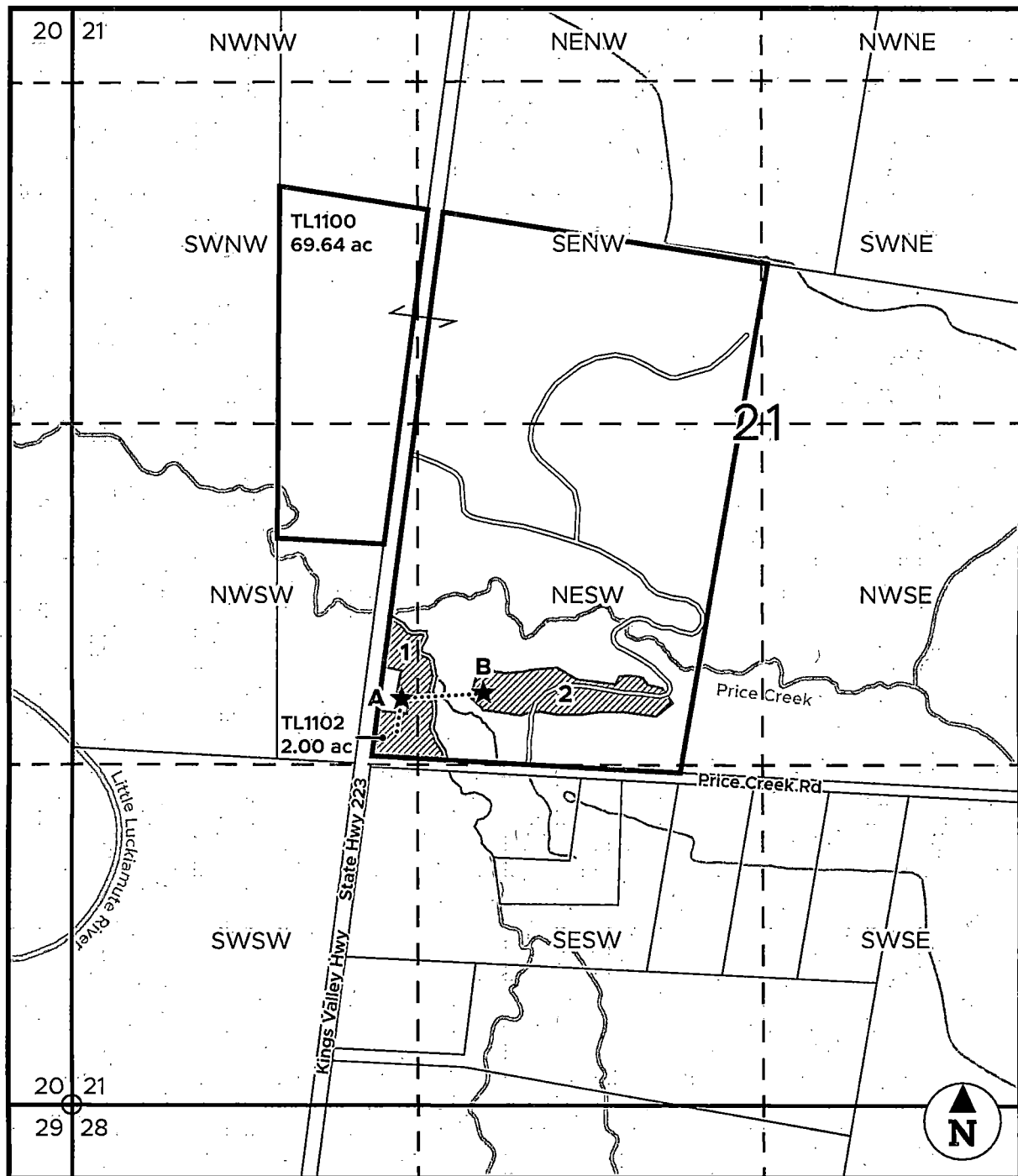


T.10S. R.6W. Section 21

BENTON COUNTY

1" = 600 ft



★ Well site A is 1,014 ft south and 1,410 ft west from the center of Section 21.

★ Water storage tank B is served by 300 feet of pipeline.

▨ Well A will serve usage area #1 (1.8 acres) and #2 (2.5 acres), totalling 4.3 acres.

..... Usage area #1 is served by 150 feet of pipeline.