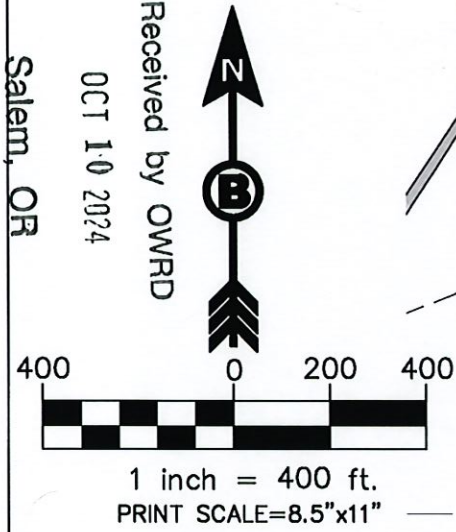
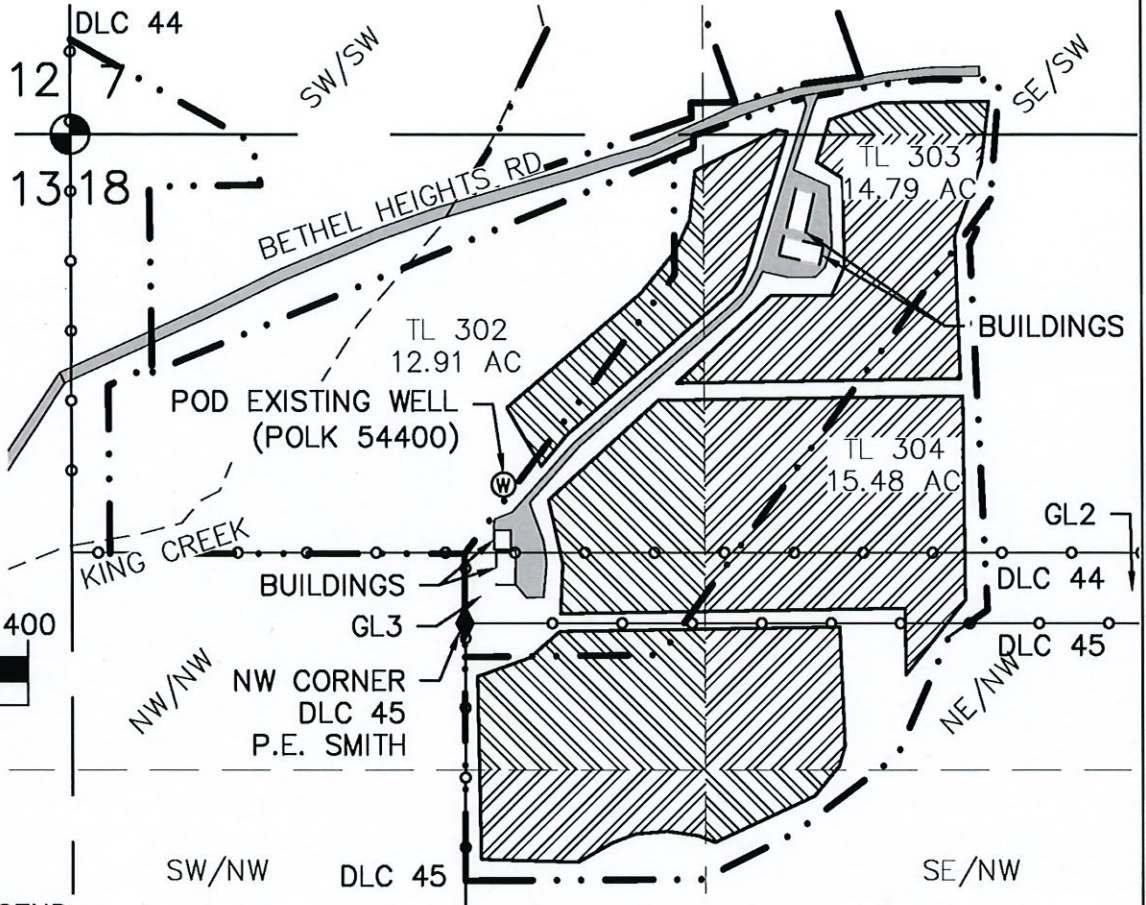


APPLICANT:
 DOMAINE SERENE
 VINEYARD AND WINERY, INC
 6555 NE HILLTOP LANE
 DAYTON, OR 97114

LIMITED LICENSE APPLICATION MAP
 T6S, R3W, SECTION 7+18, TAX LOTS 302, 303, 304, W.M.
 3700 BETHEL HEIGHTS ROAD NW, SALEM, OREGON 97304
 POLK COUNTY

POD EXISTING WELL
 (POLK 54400) IS
 LOCATED 715'S AND
 915'E FROM THE NW
 CORNER OF SECT. 18
 (APPROX. 80°N AND
 20°E OF POLK 1036)



- LEGEND
- SECTION LINE
 - - - 1/4 1/4 LINE
 - ○ ○ ○ ○ DLC LINE
 - . . . — PROPERTY LINE
 - - - - - TRIBUTARY
 - ⊙ SECTION CORNER
 - ◆ DLC CORNER
 - ▨ IRRIGATION AREA

PROPOSED IRRIGATION BY QUARTER-QUARTER						
T	R	Sec	Q-Q	G Lot	DLC	AC
6S	3W	7	SE/SW		44	0.55
6S	3W	18	NE/NW		44	8.57
6S	3W	18	NE/NW	2		1.48
6S	3W	18	NE/NW		45	2.02
6S	3W	18	NW/NW		44	3.56
6S	3W	18	NW/NW	3		0.86
6S	3W	18	NW/NW		45	3.16
6S	3W	18	SE/NW		45	0.44
6S	3W	18	SW/NW		45	1.63
TOTAL ACRES =						22.28

BLUNDON ENGINEERING, LLC.
 PO BOX 786
 HILLSBORO, OREGON 97123
 541-510-5910
 NICK@BLUNDONENGINEERING.COM
 DATE: 9-11-2024
 DWG: LL APP - C

MAP BASED ON TAX MAP 6S 3W 7+18
 AND USGS QUAD MAP

NOTE: THIS MAP IS PRODUCED TO
 APPLY FOR THE BENEFICIAL USE OF A
 WATER RIGHT. IT IS NOT INTENDED TO
 PROVIDE INFORMATION RELATIVE TO THE
 LOCATION OF PROPERTY LINES.

Certified Water Right Examiner
 #83725
Nicholas G. Blundon
 NICHOLAS GORDON BLUNDON
 MAY 14, 2019
 STATE OF OREGON
 EXPIRES 12/31/2025

BLUNDON
 ENGINEERING, LLC