

Final Proof Maps

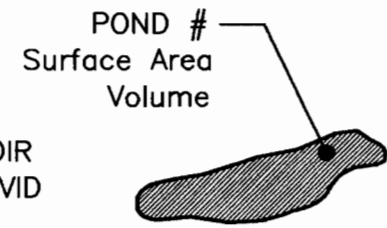
available through

OWRD WrisQuery page

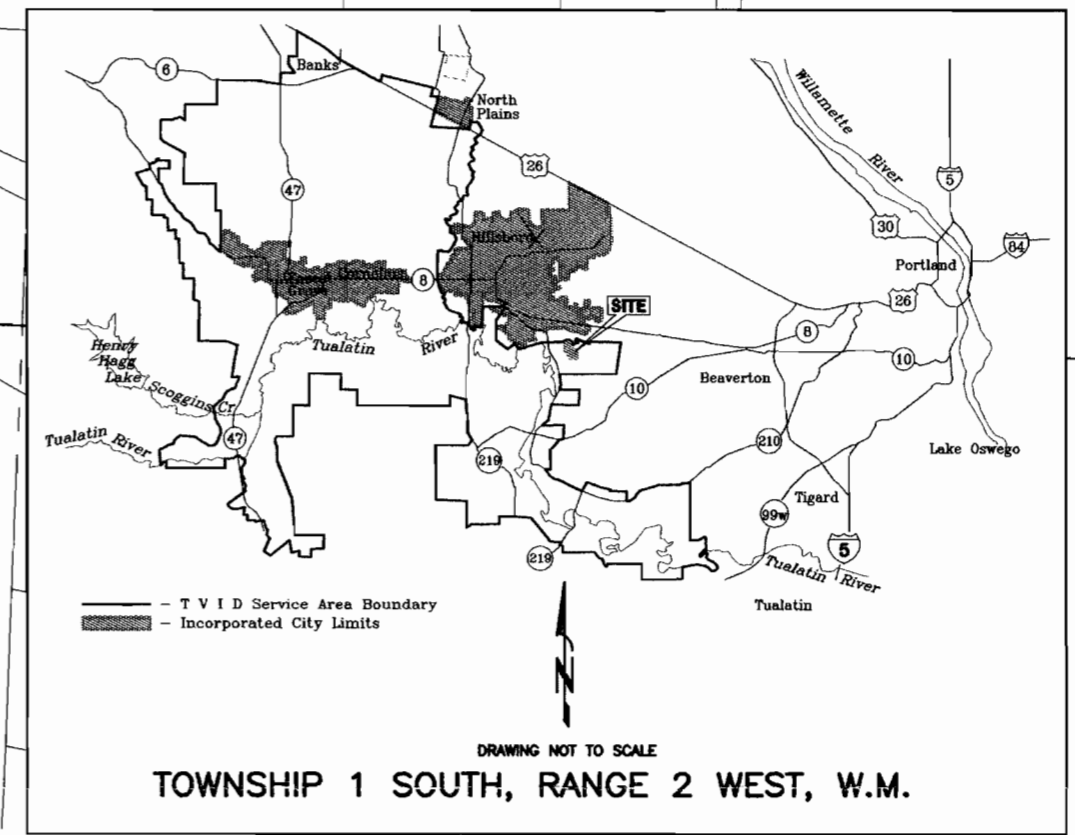
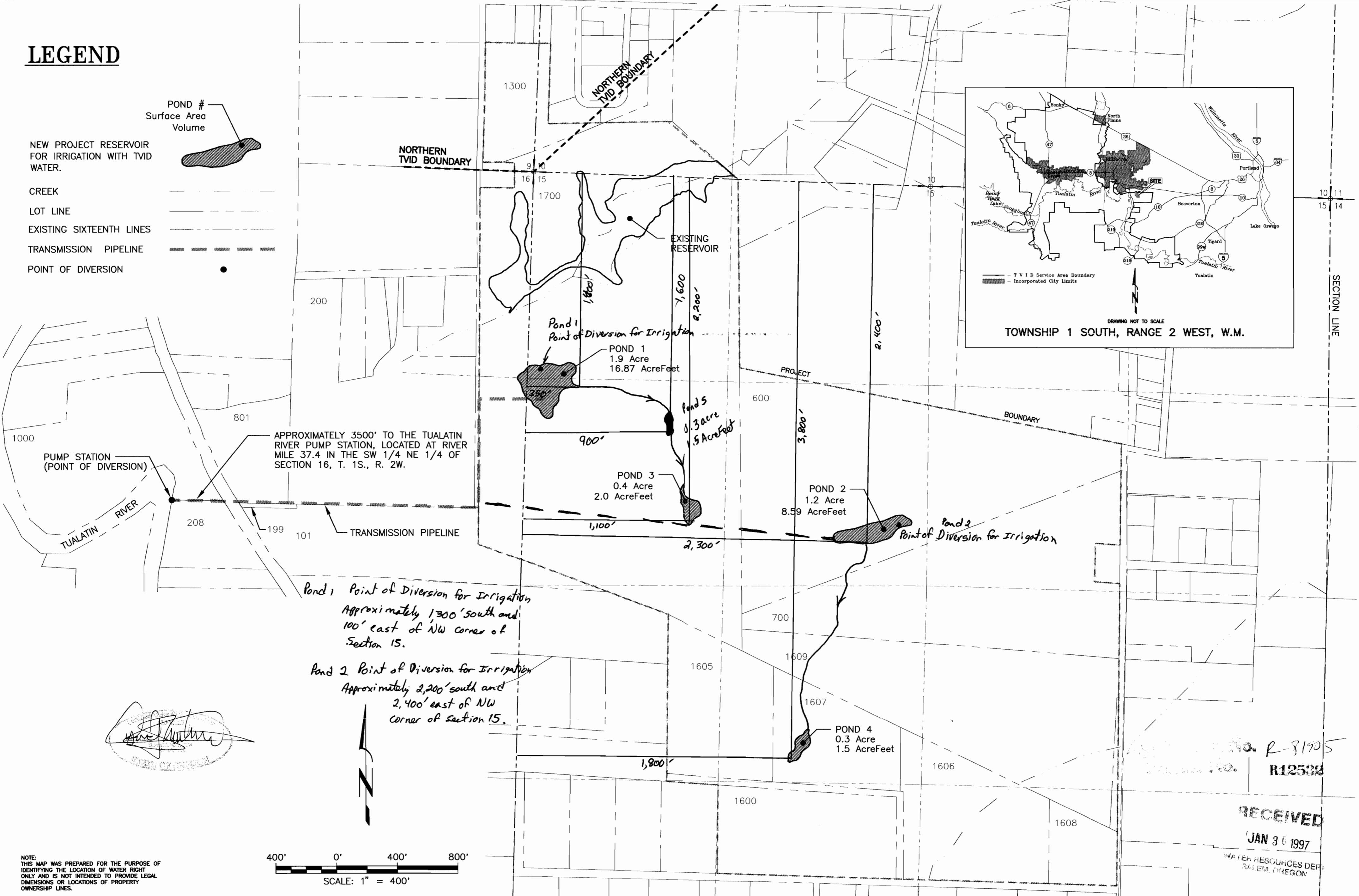
[View all scanned documents](#)

LEGEND

NEW PROJECT RESERVOIR FOR IRRIGATION WITH TVID WATER.



- CREEK
- LOT LINE
- EXISTING SIXTEENTH LINES
- TRANSMISSION PIPELINE
- POINT OF DIVERSION

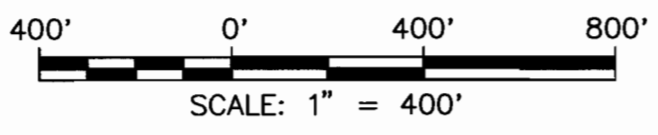


APPROXIMATELY 3500' TO THE TUALATIN RIVER PUMP STATION, LOCATED AT RIVER MILE 37.4 IN THE SW 1/4 NE 1/4 OF SECTION 16, T. 1S., R. 2W.

Pond 1 Point of Diversion for Irrigation
 Approximately 1,300' south and 100' east of NW corner of Section 15.

Pond 2 Point of Diversion for Irrigation
 Approximately 2,200' south and 2,400' east of NW corner of Section 15.

[Signature]
 DAVID J. NEWTON



NOTE: THIS MAP WAS PREPARED FOR THE PURPOSE OF IDENTIFYING THE LOCATION OF WATER RIGHT ONLY AND IS NOT INTENDED TO PROVIDE LEGAL DIMENSIONS OR LOCATIONS OF PROPERTY OWNERSHIP LINES.

No. R-31905
 R12532

RECEIVED
 JAN 30 1997
 WATER RESOURCES DEPT.
 SALEM, OREGON

NO.	DATE	BY	REVISIONS

DAVID J. NEWTON ASSOCIATES, INC.
 CIVIL & GEOLOGICAL ENGINEERING SERVICES
 1201 S.W. 12TH AVENUE, SUITE 400
 PORTLAND, OREGON 97205
 (503) 228-7718 FAX (503) 228-7781

DESIGNED BY: DJN
 DRAWN BY: RE
 CHECKED BY: DJN
 DATE: JANUARY, 1997
 SCALE: 1" = 400'

PROPOSED RESERVOIRS
FOR THE RESERVE VINEYARDS AND GOLF CLUB
 PROJECT NO: 711-101
 FILE: G:\711\101\PONDS.DWG